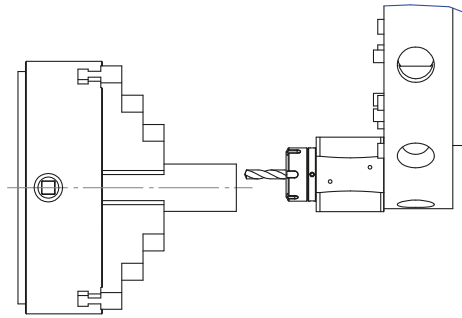


DRIVEN TOOLS AND TOOLHOLDERS

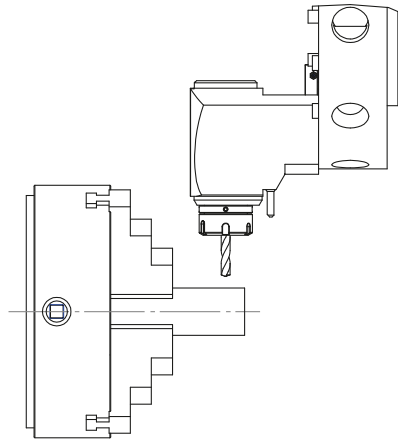
FOR CNC LATHES

OPERATIONS WITH VDI STAR - TYPE TURRET

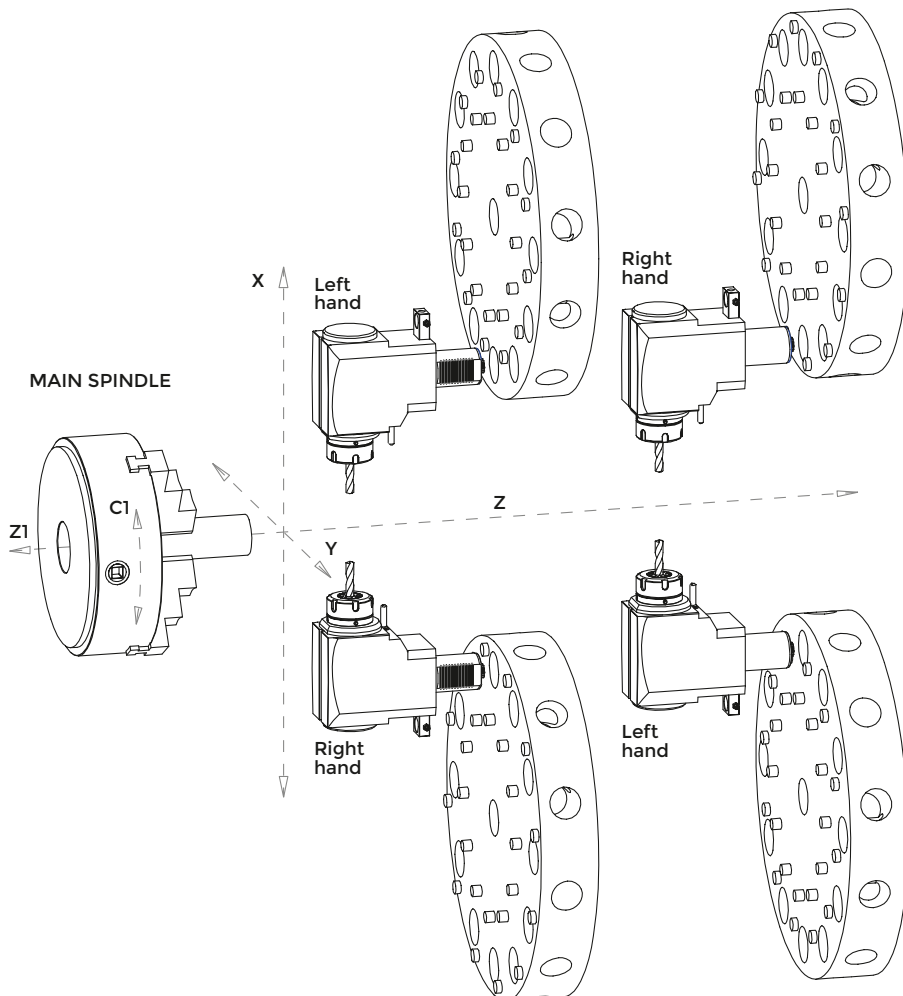
**AXIAL OPERATION
STRAIGHT TOOL HOLDER**



**RADIAL OPERATION
ANGULAR TOOL HOLDER 90° ANGLE**

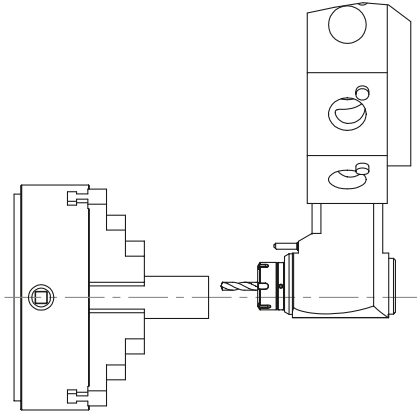


RIGHT AND LEFT HAND

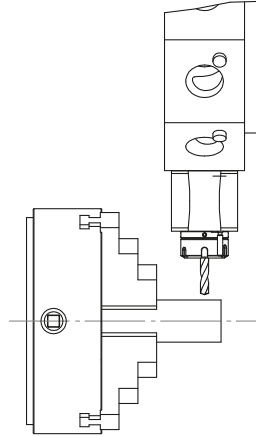


OPERATIONS WITH VDI STAR - TYPE TURRET

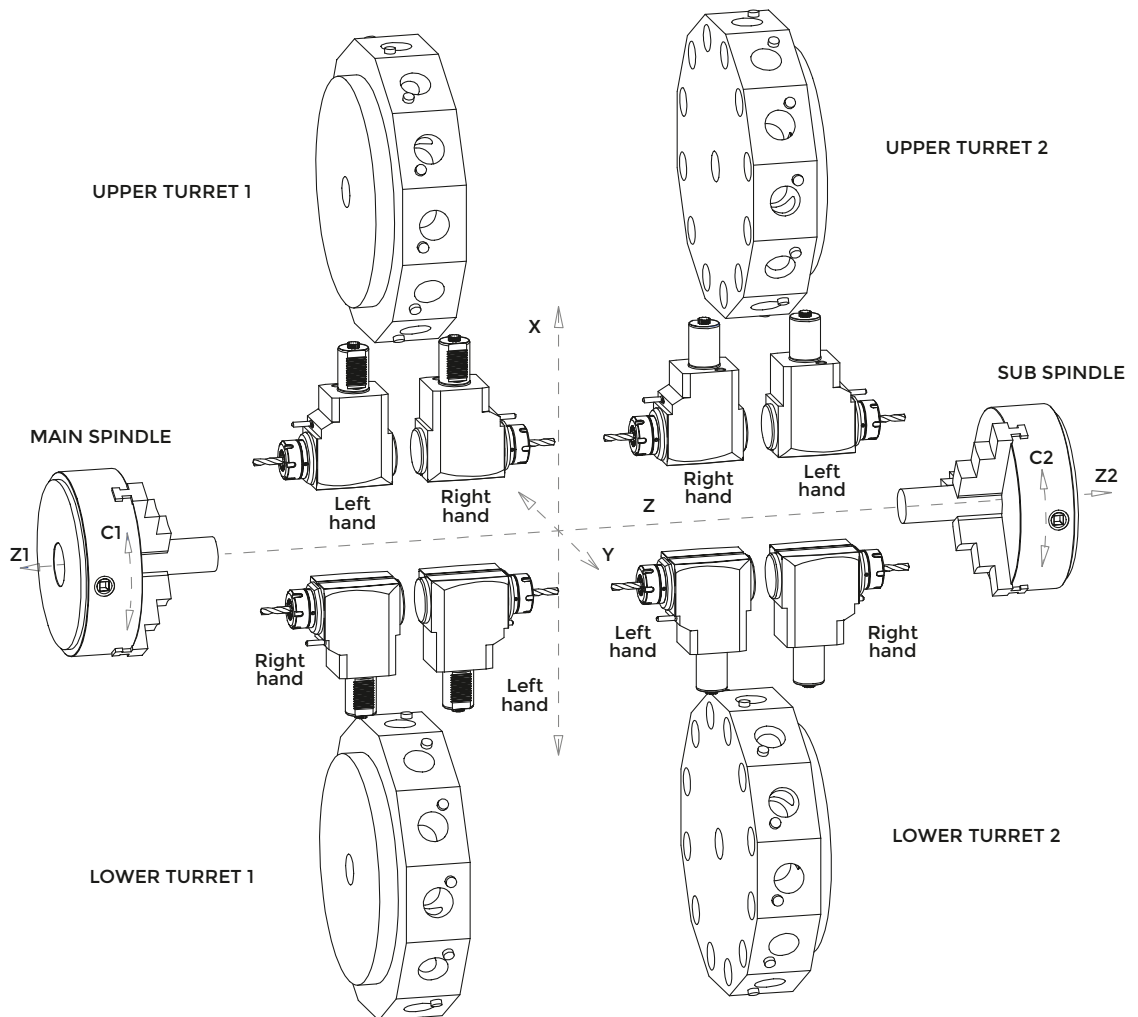
**AXIAL OPERATION
ANGULAR TOOL HOLDER 90° ANGLE**



**RADIAL OPERATION
STRAIGHT TOOL HOLDER**

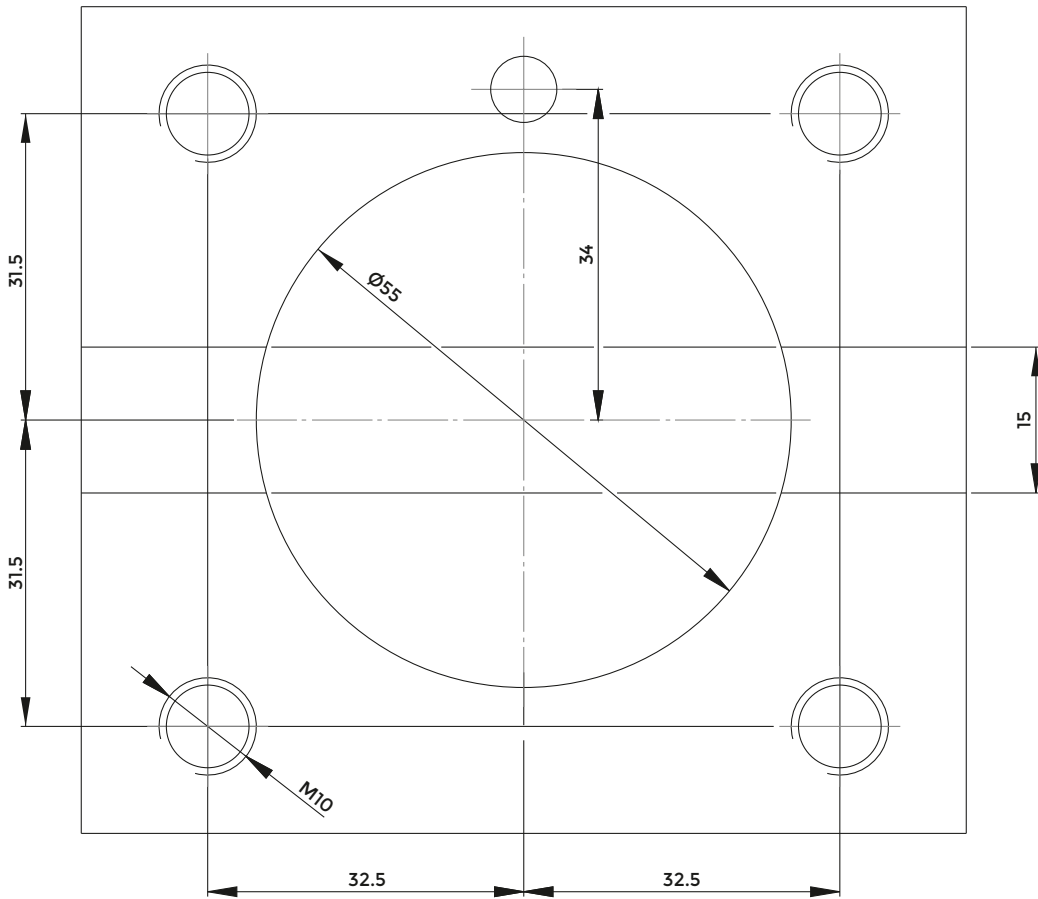


RIGHT AND LEFT HAND VERSION ON STAR TYPE TURRETS WITH MAIN AND SUB

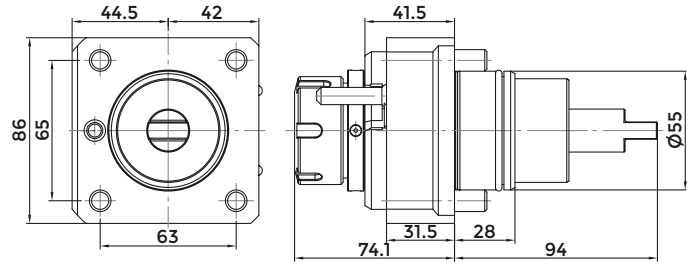


BIGLIA - B301/445/470/501(Y-S)/510/545/550/565/650/658/1200/446/465/745/765-B750/1250 16 ST.

CONNECTION TURRET BIGLIA



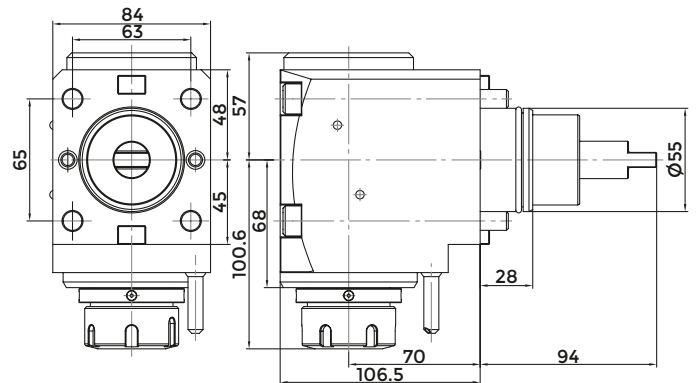
AXIAL DRILLING AND MILLING HEAD



BIGLIA

COD.	ER	MAX SPEED (Rpm)	RATIO	MAX TORQUE (Nm)	INTERNAL COOLING	P Bar
124-05519	ER25	6000	1:1	50	NO	-
124-05520	ER25	6000	1:1	50	YES	20
124-05521	ER32	6000	1:1	50	NO	-
124-05522	ER32	6000	1:1	50	YES	20

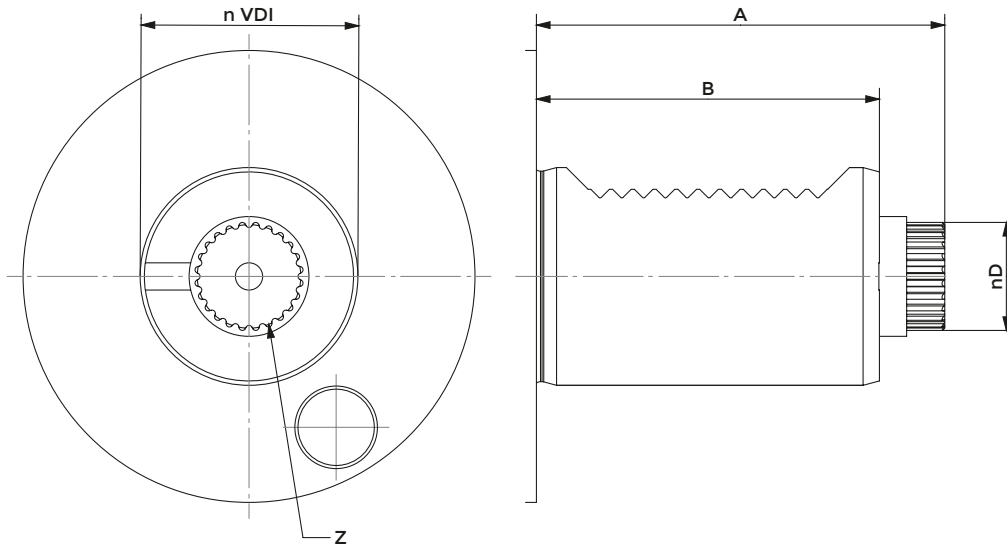
RADIAL DRILLING AND MILLING HEAD



BIGLIA

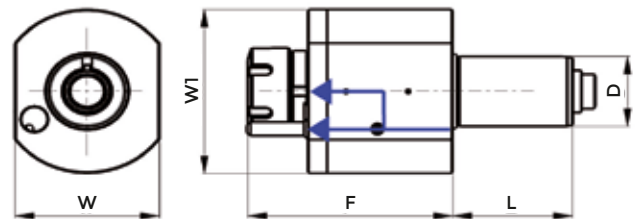
COD.	ER	MAX SPEED (Rpm)	RATIO	MAX TORQUE (Nm)	INTERNAL COOLING	P Bar
124-05523	ER32	6000	1:1	50	NO	-
124-05524	ER32	6000	1:1	50	YES	20

DIN5480



VDI	A	B	d	Z
30	67	55	15,8	18
40	75	63	19,8	24
50	93	78	23,8	18

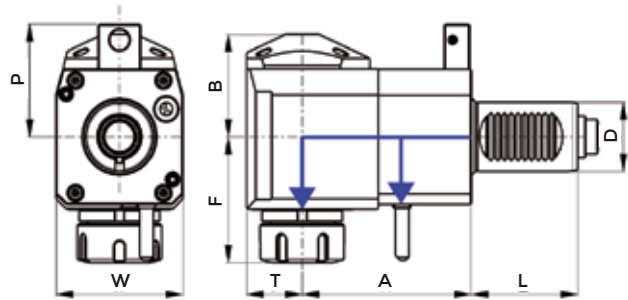
AXIAL DRILLING AND MILLING HEAD



DIN5480 SAUTER

COD.	D	ER	INTERNAL COOLING	F	L	W	W1	MAX TORQUE (Nm)	MAX SPEED (Rpm)	RATIO	P Bar
116-43001	30	ER25	NO	87	55	64	68	28	6000	1:1	-
116-43002	30	ER25	YES	87	55	64	68	28	6000	1:1	20
116-44001	40	ER25	NO	105	63	80	86	50	6000	1:1	-
116-44002	40	ER25	YES	105	63	80	86	50	6000	1:1	20
116-44003	40	ER32	NO	108	63	80	86	50	6000	1:1	-
116-44004	40	ER32	YES	108	63	80	86	50	6000	1:1	20
116-45040	50	ER32	NO	114,1	78	88	88	80	6000	1:1	-
116-45041	50	ER32	YES	114,1	78	88	88	80	6000	1:1	20
116-45017	50	ER40	YES	116,1	78	88	88	80	6000	1:1	20

RADIAL DRILLING AND MILLING HEAD



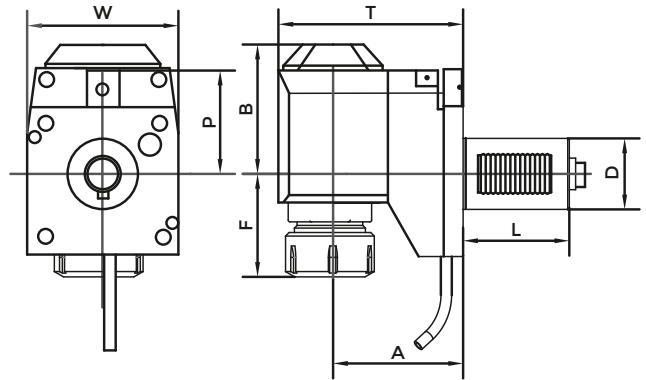
DIN5480 SAUTER

COD.	D	ER	INTERNAL COOLING	DIRECTION	A	B	F	L	P	T	W	MAX TORQUE (Nm)	MAX SPEED (Rpm)	RATIO	P Bar
116-43003	30	ER25	NO	DX	55	48	63	55	56	29	64	28	6000	1:1	-
116-43004	30	ER25	YES	DX	55	51	63	55	56	29	64	28	6000	1:1	20
116-43004L	30	ER25	YES	SX	55	51	63	55	56	29	64	28	6000	1:1	20
116-44005	40	ER25	NO	DX	80	59	70	63	65	36	75	50	6000	1:1	-
116-44006	40	ER25	YES	DX	80	62	70	63	65	36	75	50	6000	1:1	20
116-44006-80BAR	40	ER25	YES	DX	80	62	70	63	65	36	75	50	6000	1:1	80
116-43005	30	ER25	NO	DX	85	48	63	55	56	29	64	28	6000	1:1	-
116-43006	30	ER25	YES	DX	85	51	63	55	56	29	64	28	6000	1:1	20
116-54069	30	ER25	YES	DX/SX	85	51	65	55	56	29	64	28	6000	1:1	20
116-46001	30	ER25	NO	DX	100	48	63	55	56	29	64	28	6000	1:1	-
116-46002	30	ER25	YES	DX	100	51	63	55	56	29	64	28	6000	1:1	20
116-54097	40	ER25	NO	SX	100	59	72	63	65	36	75	50	6000	1:1	-
116-44007	40	ER25	NO	DX	100	59	70	63	65	36	75	50	6000	1:1	-
116-44008	40	ER25	YES	DX	100	62	70	63	65	36	75	50	6000	1:1	20
116-44009	40	ER32	NO	DX	80	59	74	63	65	36	75	50	6000	1:1	-
116-54098	40	ER32	YES	DX/SX	80	62	75	63	65	36	75	50	6000	1:1	20
116-44010	40	ER32	YES	DX	80	62	74	63	65	36	75	50	6000	1:1	20
116-44011	40	ER32	NO	DX	100	59	74	63	65	36	75	50	6000	1:1	-
116-44012	40	ER32	YES	DX	100	62	74	63	65	36	75	50	6000	1:1	20
116-44012L	40	ER32	YES	SX	100	62	74	63	65	36	75	50	6000	1:1	20
116-54099	40	ER32	YES	DX	100	72	75	63	65	36	75	50	6000	1:1	80
116-45053	50	ER32	NO	SX	110	64	117,1	78	73	42	88	80	6000	1:1	-
116-45054	50	ER32	YES	DX	110	64	117,1	78	73	42	88	80	6000	1:1	20
116-45030	50	ER40	YES	DX	110	64	119,1	78	73	42	88	80	6000	1:1	20

* left version on enquiry

ON REQUEST AVAILABLE INTERNAL COOLANT 80 BAR

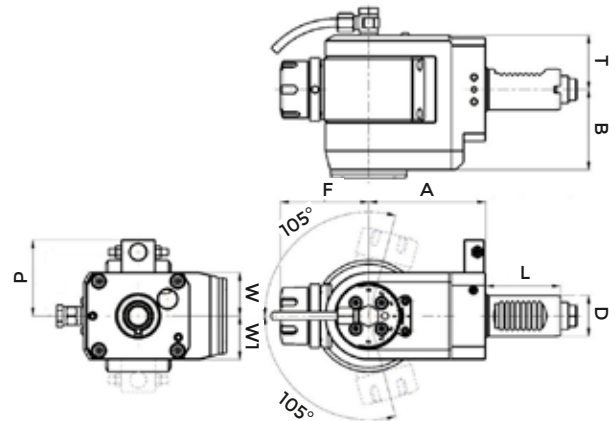
OFFSET RADIAL DRILLING AND MILLING HEAD



DIN 5480 SAUTER

COD.	D	ER	INTERNAL COOLING	DIRECTION	A	B	F	L	P	T	W	MAX TORQUE (Nm)	MAX SPEED (Rpm)	RATIO	P Bar
116-43008	30	ER25	NO	DX	75	71	40	55	56	104	64	28	6000	1:1	-
116-43009	30	ER25	YES	DX	75	74	40	55	56	104	64	28	6000	1:1	20
116-44016	40	ER32	NO	DX	120	92	41	63	65	156	75	50	6000	1:1	-
116-44017	40	ER32	YES	DX	120	95	41	63	65	156	75	50	6000	1:1	20

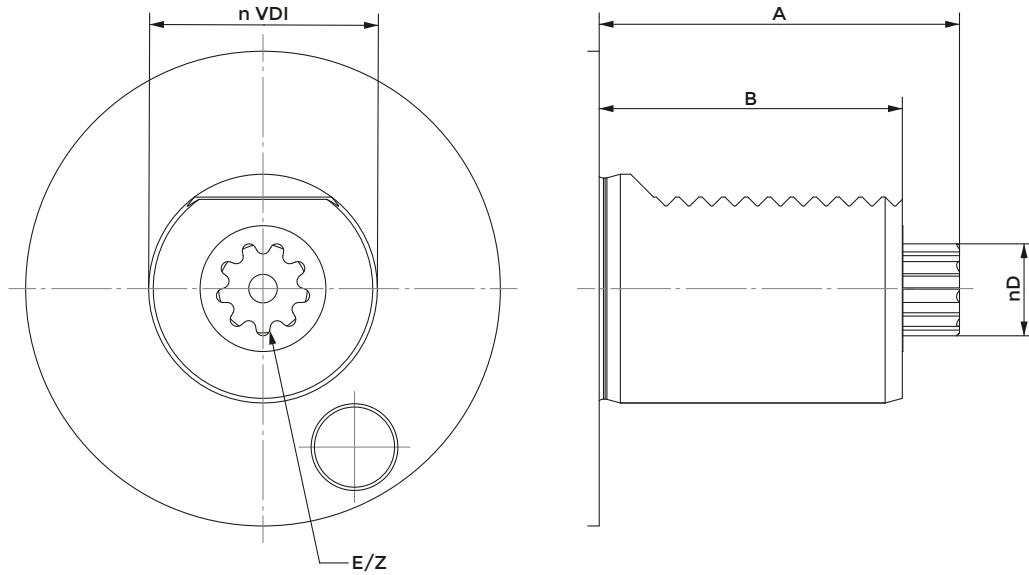
AXIAL - RADIAL DRILLING AND MILLING HEAD



DIN 5480 SAUTER

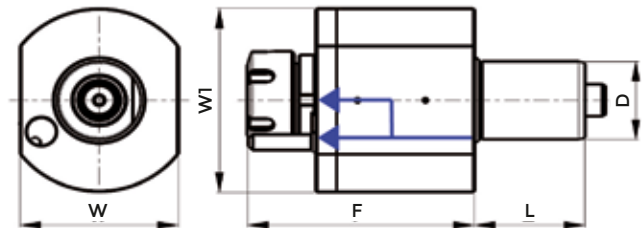
COD.	D	ER	INTERNAL COOLING	DIRECTION	A	B	F	L	P	T	W	W1	MAX TORQUE (Nm)	MAX SPEED (Rpm)	RATIO	P Bar
116-54083	30	ER25	NO	DX	86	59	45	55	56	40	32	32	16	6000	1:1	-
116-54084	30	ER25	YES	DX	86	59	45	55	56	40	32	32	16	6000	1:1	20
116-54085	30	ER25	YES	SX	86	59	65	55	56	40	32	32	16	6000	1:1	20

DIN5482



VDI	A	B	d	E	Z
30	55	45	14,5	B15X12	8
40	63	53	16,5	B17X14	9
50	93	78	19,5	B20X17	11

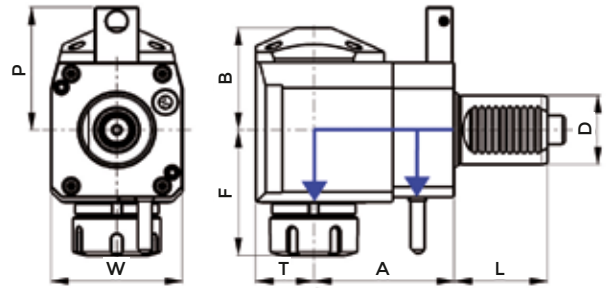
AXIAL DRILLING AND MILLING HEAD



DIN5482 SAUTER

COD.	D	ER	INTERNAL COOLING	F	L	W	W1	MAX TORQUE (Nm)	MAX SPEED (Rpm)	RATIO	P Bar
116-43010	30	ER25	NO	87	45	64	68	28	6000	1:1	-
116-43011	30	ER25	YES	87	45	64	68	28	6000	1:1	20
116-44019	40	ER25	YES	105	53	80	86	50	6000	1:1	20
116-44020	40	ER32	NO	108	53	80	86	50	6000	1:1	-
116-44021	40	ER32	YES	108	53	80	86	50	6000	1:1	20
116-45013	50	ER40	YES	116,1	71	88	88	80	6000	1:1	20

RADIAL DRILLING AND MILLING HEAD



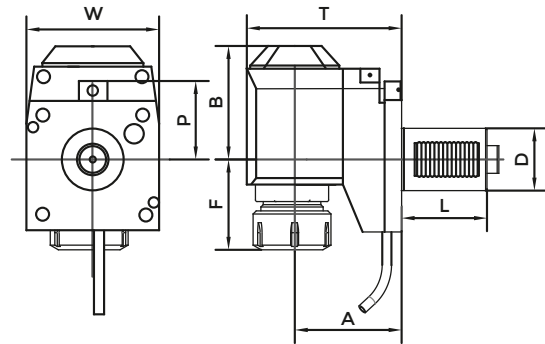
DIN5482 SAUTER

COD.	D	ER	INTERNAL COOLING	DIRECTION	A	B	F	L	P	T	W	MAX TORQUE (Nm)	MAX SPEED (Rpm)	RATIO	P Bar
116-43013	30	ER25	YES	DX	55	51	63	45	48	26	64	28	6000	1:1	20
116-44024	40	ER32	NO	DX	80	59	74	53	71	33	75	50	6000	1:1	-
116-44025	40	ER32	YES	DX	80	62	74	53	71	33	75	50	6000	1:1	20
116-45044	50	ER32	NO	DX	110	64	117,1	71	83	42	88	80	6000	1:1	-

* left version on enquiry

ON REQUEST AVAILABLE INTERNAL COOLANT 80 BAR

OFFSET RADIAL DRILLING AND MILLING HEAD



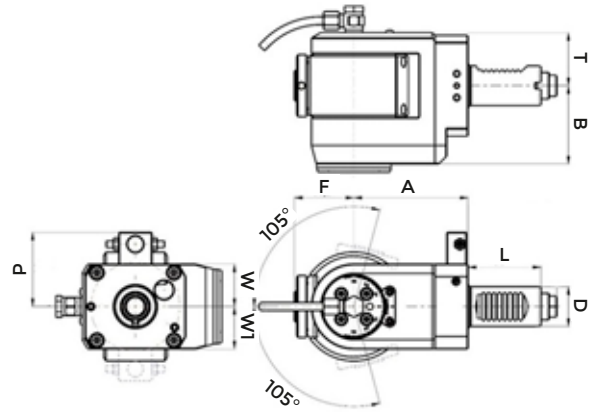
DIN5482 SAUTER

COD.	D	ER	INTERNAL COOLING	DIRECTION	A	B	F	L	P	T	W	MAX TORQUE (Nm)	MAX SPEED (Rpm)	RATIO	P Bar
116-54076	30	ER25	NO	SX	75	71	42	45	48	104	64	28	6000	1:1	-

* left version on enquiry

ON REQUEST AVAILABLE INTERNAL COOLANT 80 BAR

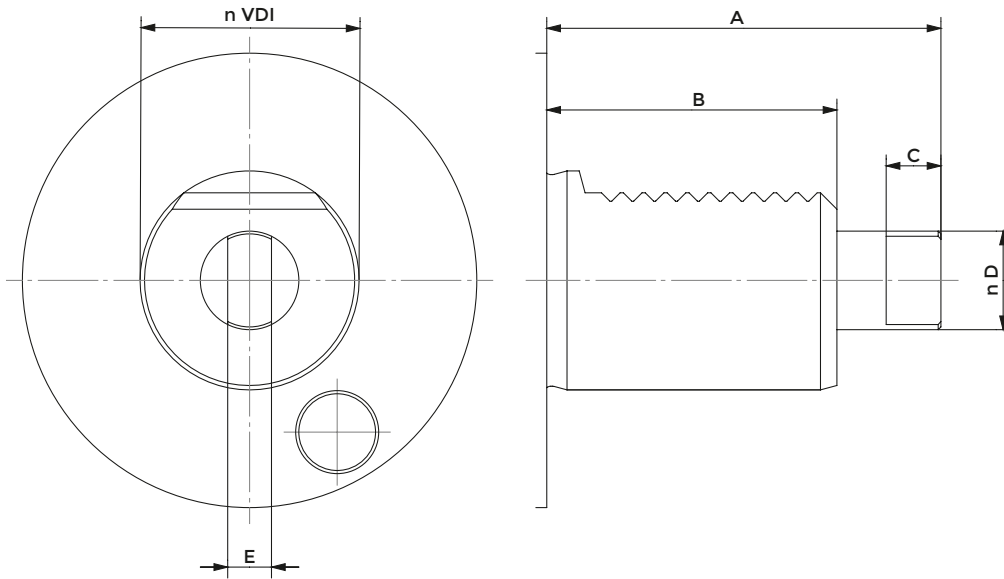
AXIAL - RADIAL DRILLING AND MILLING HEAD WITH INTERNAL NUT



DIN5482 SAUTER

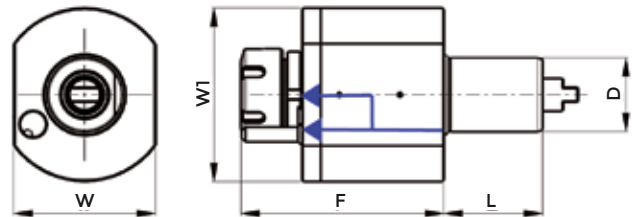
COD.	D	ER	INTERNAL COOLING	DIRECTION	A	B	F	L	P	T	W	W1	MAX TORQUE (Nm)	MAX SPEED (Rpm)	RATIO	P Bar
116-54080	30	ER16	NO	DX	86	59	45	55	48	40	32	32	16	6000	1:1	-

DIN1809



VDI	A	B	C	d	E
30	62	45	8	12	6
40	72	53	10	18	8
50	91	78	13	24	13

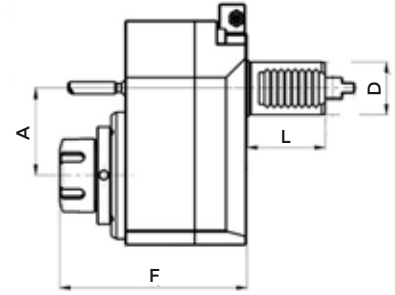
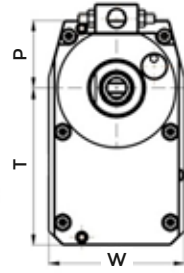
AXIAL DRILLING AND MILLING HEAD



DIN1809 - DIPLOMATIC

COD.	D	ER	INTERNAL COOLING	F	L	W	WT	MAX TORQUE (Nm)	MAX SPEED (Rpm)	RATIO	P Bar
116-54065	30	ER25	YES	90	55	64	68	28	6000	1:1	20
116-43017	30	ER25	NO	87	45	64	68	28	6000	1:1	-
116-43018	30	ER25	YES	87	45	64	68	28	6000	1:1	20
116-44027	40	ER25	YES	105	53	80	86	50	6000	1:1	20
116-44028	40	ER32	NO	108	53	80	86	50	6000	1:1	-
116-44029	40	ER32	YES	108	53	80	86	50	6000	1:1	20
116-44030	40	ER32	NO	95	53	80	86	50	6000	1:1	-
116-44031	40	ER32	YES	95	53	80	86	50	6000	1:1	20
116-45039	50	ER32	YES	114,1	71	88	88	80	6000	1:1	20
116-45014	50	ER40	NO	116,1	71	88	88	80	6000	1:1	-
116-45015	50	ER40	YES	116,1	71	88	88	80	6000	1:1	20

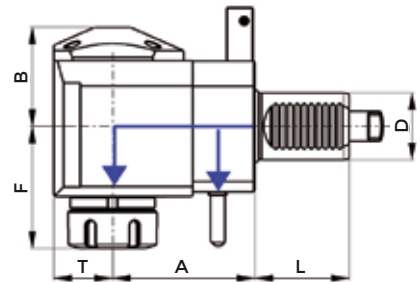
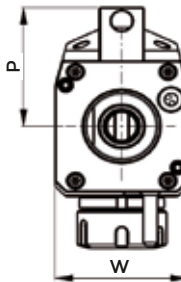
OFFSET AXIAL DRILLING AND MILLING HEAD



DIN1809 - DIPLOMATIC

COD.	D	ER	INTERNAL COOLING	DIRECTION	A	F	L	P	T	W	MAX TORQUE (Nm)	MAX SPEED (Rpm)	RATIO	P Bar
116-54074	30	ER25	NO	DX	50	107,6	45	40	90	78	14	12000	1:2	-

RADIAL DRILLING AND MILLING HEAD



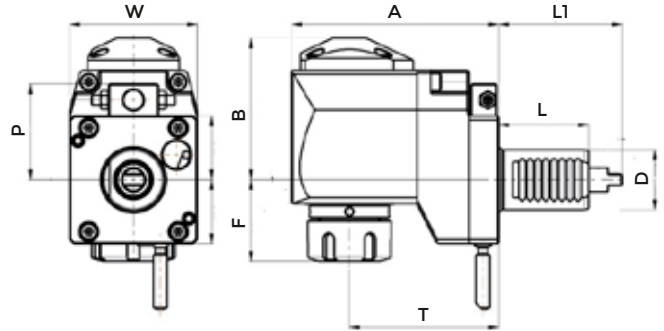
DIN1809 - DIPLOMATIC

COD.	D	ER	INTERNAL COOLING	DIRECTION	A	B	F	L	P	T	W	MAX TORQUE (Nm)	MAX SPEED (Rpm)	RATIO	P Bar
116-54068	30	ER25	NO	SX	55	48	65	55	48	29	64	28	6000	1:1	-
116-43019	30	ER25	NO	DX	55	48	63	45	48	29	64	28	6000	1:1	-
116-43020	30	ER25	YES	DX	55	51	63	45	48	29	64	28	6000	1:1	20
116-54092	40	ER32	NO	SX	80	59	75	53	71	36	75	50	6000	1:1	-
116-44034	40	ER32	NO	DX	80	59	74	53	71	36	75	50	6000	1:1	-
116-44035	40	ER32	YES	DX	80	62	74	53	71	36	75	50	6000	1:1	20
116-44038	40	ER32	NO	SX	100	59	74	53	-	36	75	50	6000	1:1	-
116-44039	40	ER32	YES	SX	100	62	74	53	-	36	75	50	6000	1:1	20
116-45050	50	ER32	YES	DX	110	64	117,1	71	83	42	88	80	6000	1:1	20
116-45051	50	ER32	YES	SX	110	64	117,1	71	83	42	88	80	6000	1:1	20
116-45026	50	ER40	YES	DX	110	64	119,1	71	83	42	88	80	6000	1:1	20

* left version on enquiry

ON REQUEST AVAILABLE INTERNAL COOLANT 80 BAR

OFFSET RADIAL DRILLING AND MILLING HEAD

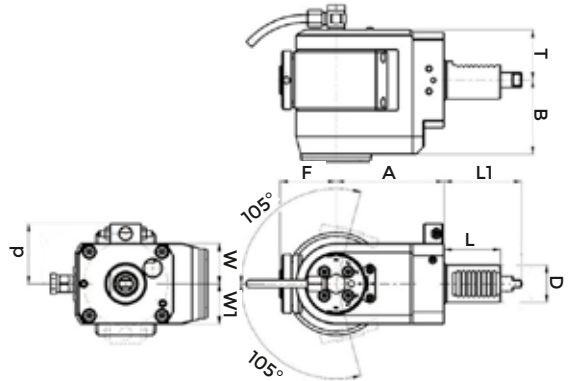


DIN1809 - DIPLOMATIC

COD.	D	ER	INTERNAL COOLING	DIRECTION	A	B	F	L	P	T	W	MAX TORQUE (Nm)	MAX SPEED (Rpm)	RATIO	P Bar
116-43022	30	ER25	NO	DX	104	71	40	45	48	75	64	28	6000	1:1	-
116-43022L	30	ER25	NO	SX	104	71	40	45	48	75	64	28	6000	1:1	-
116-43023	30	ER25	YES	DX	104	74	40	45	48	75	64	28	6000	1:1	20
116-46010	40	ER32	YES	DX	156	95	40	53	72	120	75	50	6000	1:1	20

ON REQUEST AVAILABLE INTERNAL COOLANT 80 BAR

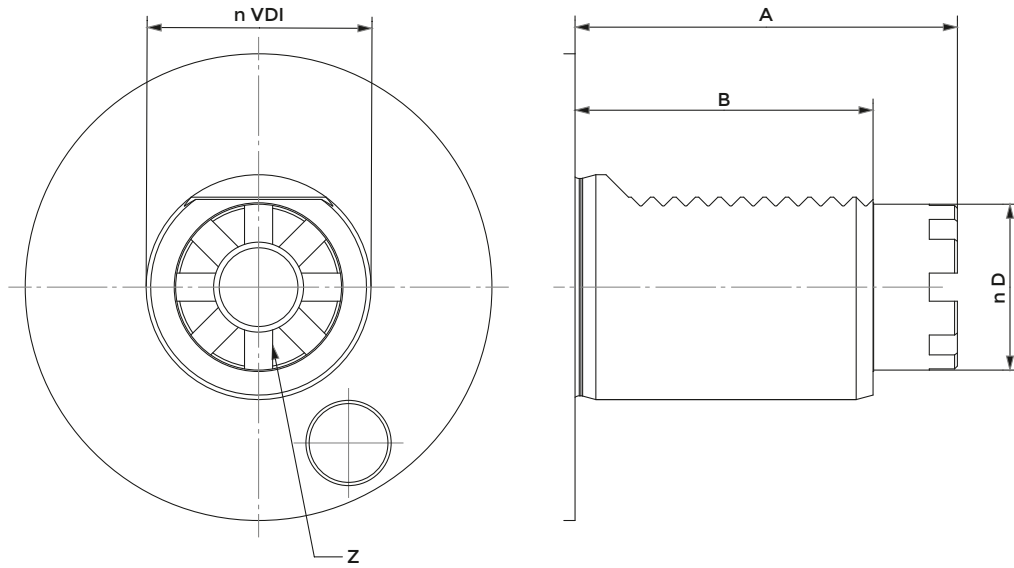
AXIAL - RADIAL DRILLING AND MILLING HEAD WITH INTERNAL NUT



DIN1809 - DIPLOMATIC

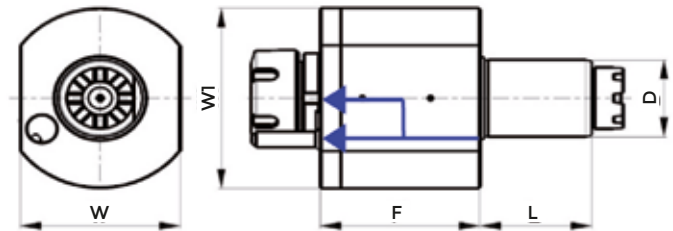
COD.	D	ER	INTERNAL COOLING	DIRECTION	A	B	F	L	L1	P	T	W	W1	MAX TORQUE (Nm)	MAX SPEED (Rpm)	RATIO	P Bar
116-54082	30	ER16	NO	DX	79	59	45	45	62	48	40	32	32	16	6000	1:1	-
116-54081	30	ER25	NO	SX	79	59	45	45	62	48	40	32	32	16	6000	1:1	-
116-54114	40	ER25	NO	SX	79	59	65	53	72	71	40	32	32	16	6000	1:1	-

TOEM BARUFFALDI



VDI	A	B	d	Z
30	59	45/53	24	6
40	68	53	32	8
50	84	70	40	8

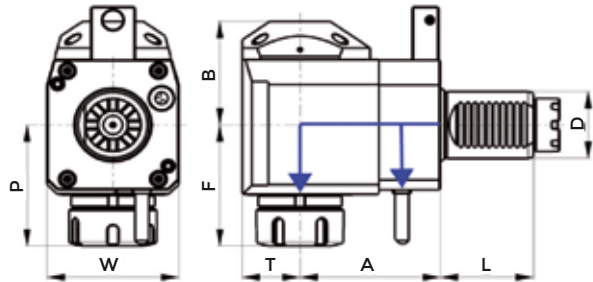
AXIAL DRILLING AND MILLING HEAD



TOEM BARUFFALDI

COD.	D	ER	INTERNAL COOLING	F	L	W	W1	MAX TORQUE (Nm)	MAX SPEED (Rpm)	RATIO	P Bar
116-43024	30	ER25	NO	87	45	64	68	28	6000	1:1	-
116-43025	30	ER25	YES	87	45	64	68	28	6000	1:1	20
116-44045	40	ER25	YES	105	53	80	86	50	6000	1:1	20
116-44046	40	ER32	NO	108	53	80	86	50	6000	1:1	-
116-44047	40	ER32	YES	108	53	80	86	50	6000	1:1	20
116-45043	50	ER32	YES	114,1	71	88	88	80	6000	1:1	20
116-45018	50	ER40	NO	116,1	71	88	88	80	6000	1:1	-
116-45019	50	ER40	YES	116,1	71	88	88	80	6000	1:1	20

RADIAL DRILLING AND MILLING HEAD



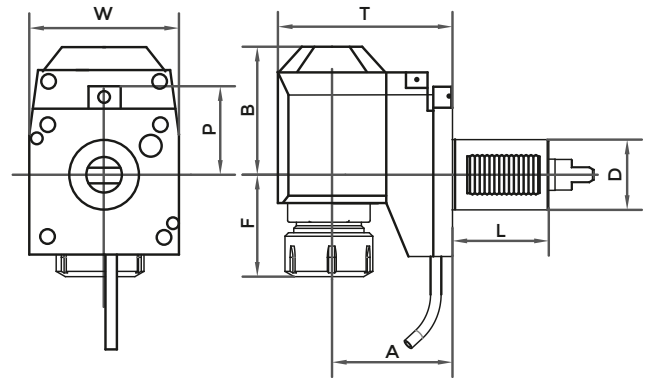
TOEM BARUFFALDI

COD.	D	ER	INTERNAL COOLING	DIRECTION	A	B	F	L	P	T	W	MAX TORQUE (Nm)	MAX SPEED (Rpm)	RATIO	P Bar
116-54072	30	ER25	YES	DX	55	61	65	45	48	29	64	28	6000	1:1	80
116-43026	30	ER25	NO	DX	55	48	63	45	48	29	64	28	6000	1:1	-
116-43027	30	ER25	YES	DX	55	51	63	45	48	29	64	28	6000	1:1	20
116-54070	30	ER25	NO	SX	85	48	65	45	48	29	64	28	6000	1:1	-
116-54071	30	ER25	YES	SX	85	48	65	45	48	29	64	28	6000	1:1	20
116-44049	40	ER25	YES	DX	80	62	70	53	71	36	75	50	6000	1:1	20
116-44050	40	ER32	NO	DX	80	59	74	53	71	36	75	50	6000	1:1	-
116-44051	40	ER32	YES	DX	80	62	74	53	71	36	75	50	6000	1:1	20
116-45059	50	ER32	YES	SX	110	64	117,1	71	83	42	88	80	6000	1:1	20
116-45033	50	ER40	NO	SX	110	64	119,1	71	83	42	88	80	6000	1:1	20
116-45034	50	ER40	YES	DX	110	64	119,1	71	83	42	88	80	6000	1:1	20
116-45035	50	ER40	YES	SX	110	64	119,1	71	83	42	88	80	6000	1:1	20

* left version on enquiry

ON REQUEST AVAILABLE INTERNAL COOLANT 80 BAR

OFFSET RADIAL DRILLING AND MILLING HEAD

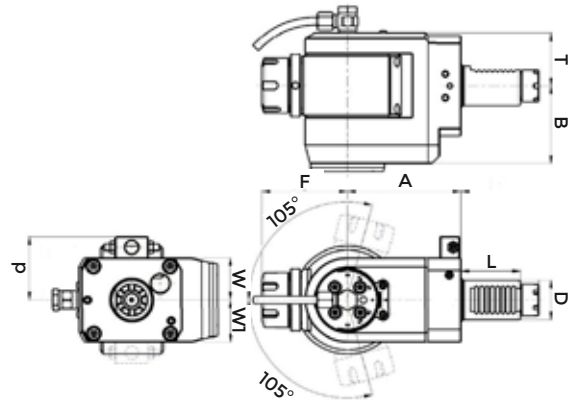


TOEM BARUFFALDI

COD.	D	ER	INTERNAL COOLING	DIRECTION	A	B	F	L	P	T	W	MAX TORQUE (Nm)	MAX SPEED (Rpm)	RATIO	P Bar
116-43029	30	ER25	NO	DX	75	71	40	45	48	104	64	28	6000	1:1	-
116-43030	30	ER25	YES	DX	75	74	40	45	48	104	64	28	6000	1:1	20
116-46012	40	ER25	YES	DX	120	95	37	53	71	156	75	50	6000	1:1	20
116-46013	40	ER32	NO	DX	120	92	41	53	71	156	75	50	6000	1:1	-
116-46014	40	ER32	YES	DX	120	95	41	53	71	156	75	50	6000	1:1	20

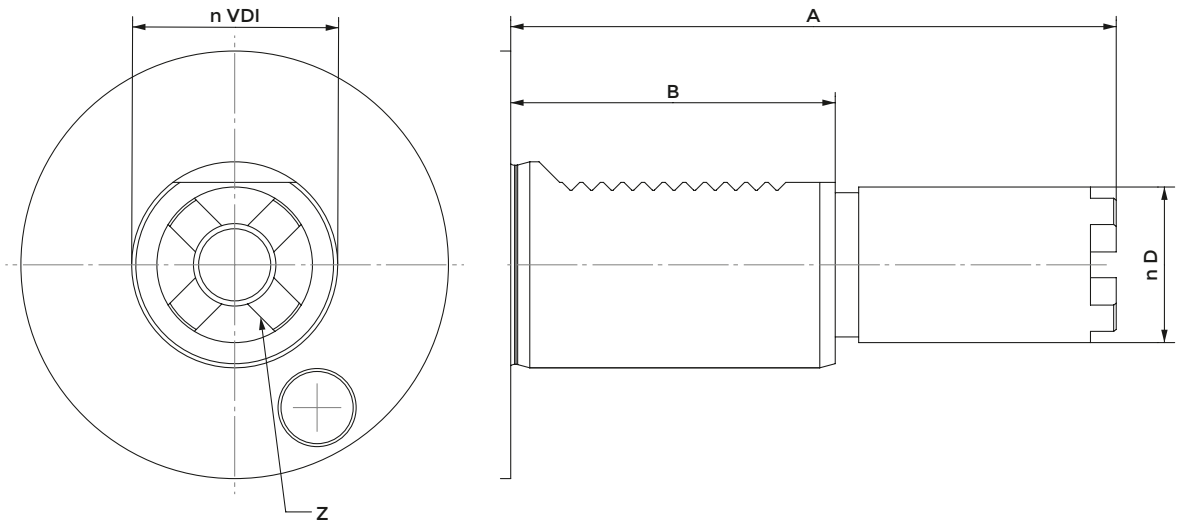
ON REQUEST AVAILABLE INTERNAL COOLANT 80 BAR

AXIAL - RADIAL DRILLING AND MILLING HEAD



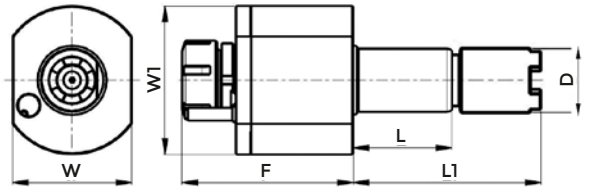
TOEM BARUFFALDI

COD.	D	ER	INTERNAL COOLING	DIRECTION	A	B	F	L	P	T	W	W1	MAX TORQUE (Nm)	MAX SPEED (Rpm)	RATIO	P Bar
116-54086	30	ER25	NO	DX	79	59	65	45	48	40	39	39	16	6000	1:1	-
116-54130	40	ER25	NO	SX	79	59	65	53	71	40	39	39	16	6000	1:1	-
116-54131	40	ER25	YES	SX	86	59	65	53	71	40	39	39	16	6000	1:1	20



VDI	A	B	D	Z	TIPO
40	104,85	63	30,2	4	1
40	117,55	63	30,2	4	2
40	130,25	63	30,2	4	3

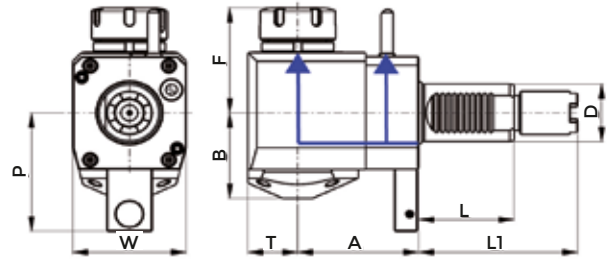
AXIAL DRILLING AND MILLING HEAD



STEPPED - HAAS

COD.	D	ER	INTERNAL COOLING	F	L	L1	W	W1	MAX TORQUE (Nm)	MAX SPEED (Rpm)	RATIO	P Bar
116-44060	40	ER25	NO	105	63	117,55	80	86	50	6000	1:1	-
116-44058	40	ER32	NO	108	63	104,85	80	86	50	6000	1:1	-
116-44059	40	ER32	YES	108	63	104,85	80	86	50	6000	1:1	20
116-44062	40	ER32	NO	108	63	117,55	80	86	50	6000	1:1	-
116-44063	40	ER32	YES	108	63	117,55	80	86	50	6000	1:1	20
116-44066	40	ER32	NO	108	63	130,25	80	86	50	6000	1:1	-

RADIAL DRILLING AND MILLING HEAD

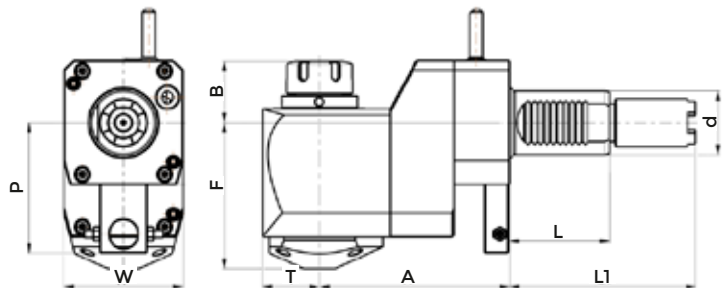


STEPPED - HAAS

COD.	D	ER	INTERNAL COOLING	DIRECTION	A	B	F	L	L1	P	T	W	MAX TORQUE (Nm)	MAX SPEED (Rpm)	RATIO	P Bar
116-44073	40	ER25	YES	SX	80	62	70	63	117,55	82	36	75	50	6000	1:1	20
116-54105	40	ER32	YES	SX	80	59	91	63	130,25	82	36	75	50	6000	1:1	20
116-47003	40	ER32	NO	SX	69	59	74	63	104,85	82	36	75	50	6000	1:1	-
116-54101	40	ER32	NO	SX	69	56	91	63	117,55	82	36	75	50	6000	1:1	-
116-47004	40	ER32	YES	SX	69	62	74	63	104,85	82	36	75	50	6000	1:1	20
116-47007	40	ER32	NO	SX	69	59	74	63	117,55	82	36	75	50	6000	1:1	-
116-47008	40	ER32	YES	SX	69	62	74	63	117,55	82	36	75	50	6000	1:1	20
116-44074	40	ER32	NO	SX	80	59	74	63	117,55	82	36	75	50	6000	1:1	-
116-44075	40	ER32	YES	SX	80	62	74	63	117,55	82	36	75	50	6000	1:1	20
116-44078	40	ER32	NO	SX	80	59	74	63	130,25	82	36	75	50	6000	1:1	-

ON REQUES AVAILABLE INTERNAL COOLANT 80 BAR

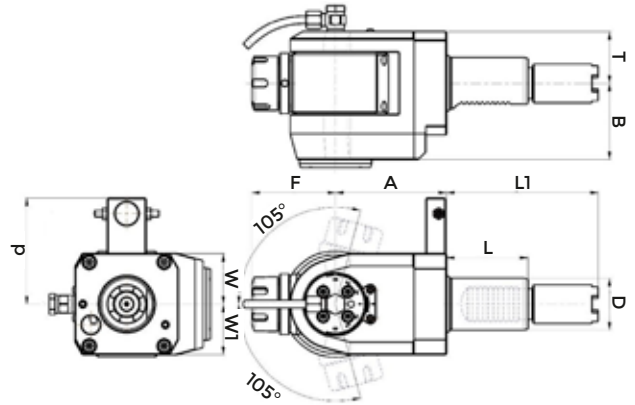
OFFSET RADIAL DRILLING AND MILLING HEAD



STEPPED - HAAS

COD.	D	ER	INTERNAL COOLING	DIRECTION	A	B	F	L	L1	P	T	W	MAX TORQUE (Nm)	MAX SPEED (Rpm)	RATIO	P Bar
116-54110	40	ER32	NO	SX	120	92	42	63	117,55	82	36	75	50	6000	1:1	-
116-54113	40	ER32	YES	SX	120	95	42	63	117,55	82	36	75	50	6000	1:1	20

AXIAL - RADIAL DRILLING AND MILLING HEAD

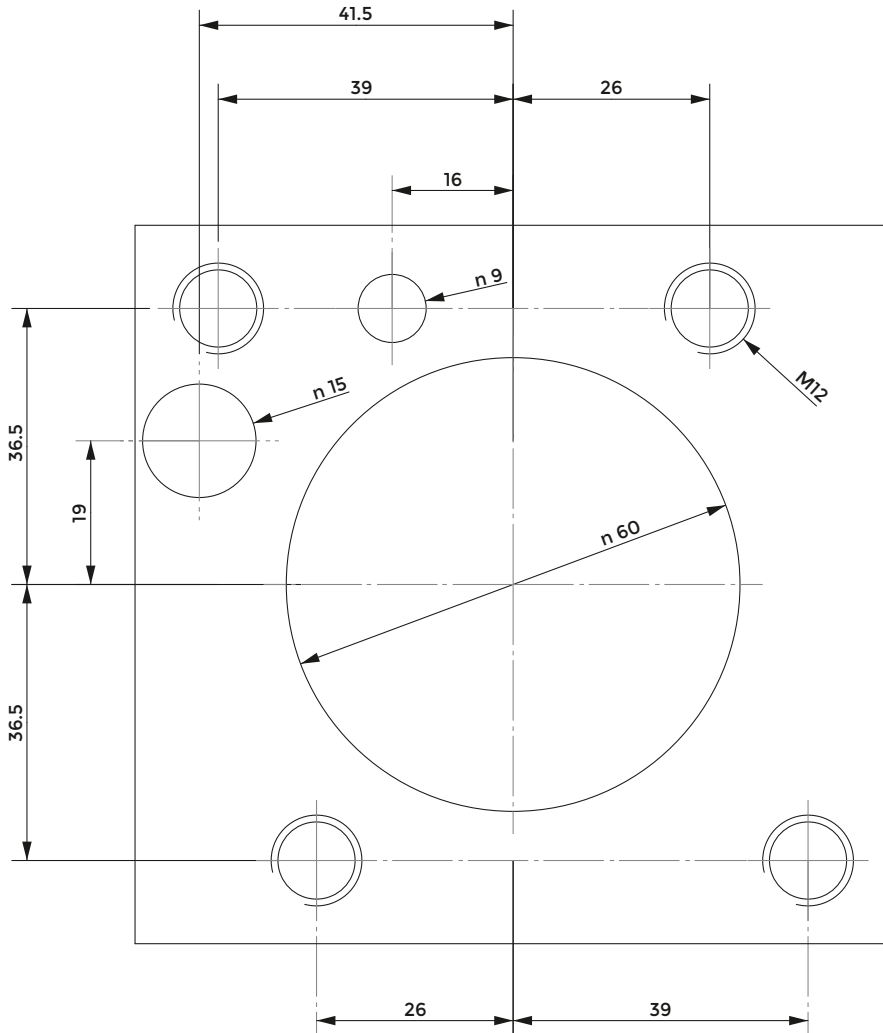


STEPPED - HAAS

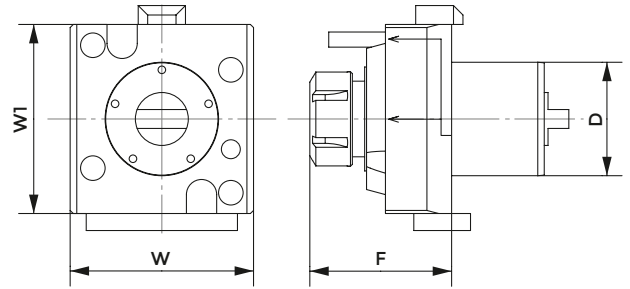
COD.	D	ER	INTERNAL COOLING	DIRECTION	A	B	F	L	L1	P	T	W	W1	MAX TORQUE (Nm)	MAX SPEED (Rpm)	RATIO	P Bar
124-04009	40	ER25	YES	SX	86	59	65	63	130,25	82	40	39	39	16	6000	1:1	20

OKUMA - BMT60 - LB2000 EX (M) - LB2500 EX (M) - LB3000 EX (M,MY) - LT2000 EX - LT3000 EX
LB3000 EX (MW,MYW) - LU2000 EX - LU2500 EX - LU3000 EX (M,MW,MY) - GENOS L300 (MY,MW,MYW)

CONNECTION TURRET BMT60



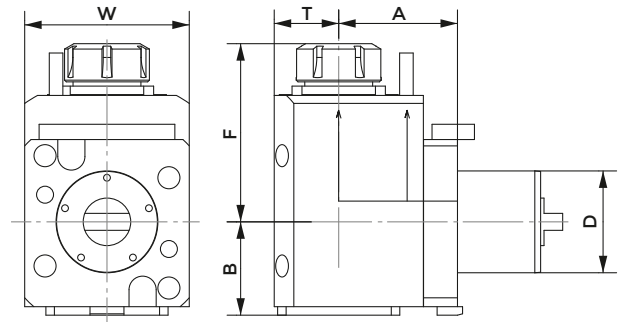
AXIAL DRILLING AND MILLING HEAD



OKUMA BMT60

COD.	D	ER	INTERNAL COOLING	A	B	F	MAX TORQUE (Nm)	MAX SPEED (Rpm)	RATIO	P Bar
124-06005	60	ER32	NO	87	97	100	70	6000	1:1	-
124-06006	60	ER32	YES	87	97	100	70	6000	1:1	20

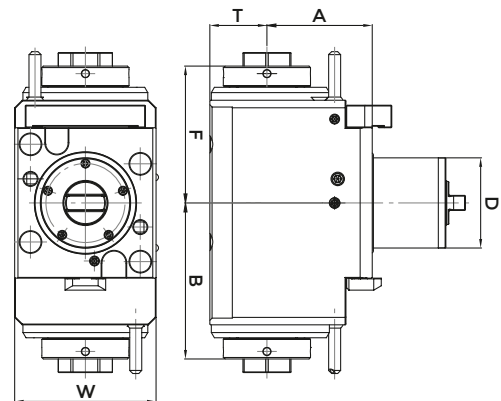
RADIAL DRILLING AND MILLING HEAD



OKUMA BMT60

COD.	D	ER	INTERNAL COOLING	DIRECTION	A	B	F	T	W	MAX TORQUE (Nm)	MAX SPEED (Rpm)	RATIO	P Bar
124-06007	60	ER32	NO	DX/SX	70	59	111	38	94	70	6000	1:1	-
124-06008	60	ER32	YES	DX/SX	70	59	111	38	94	70	6000	1:1	20

DOUBLE RADIAL DRILLING AND MILLING HEAD WITH INTERNAL NUT

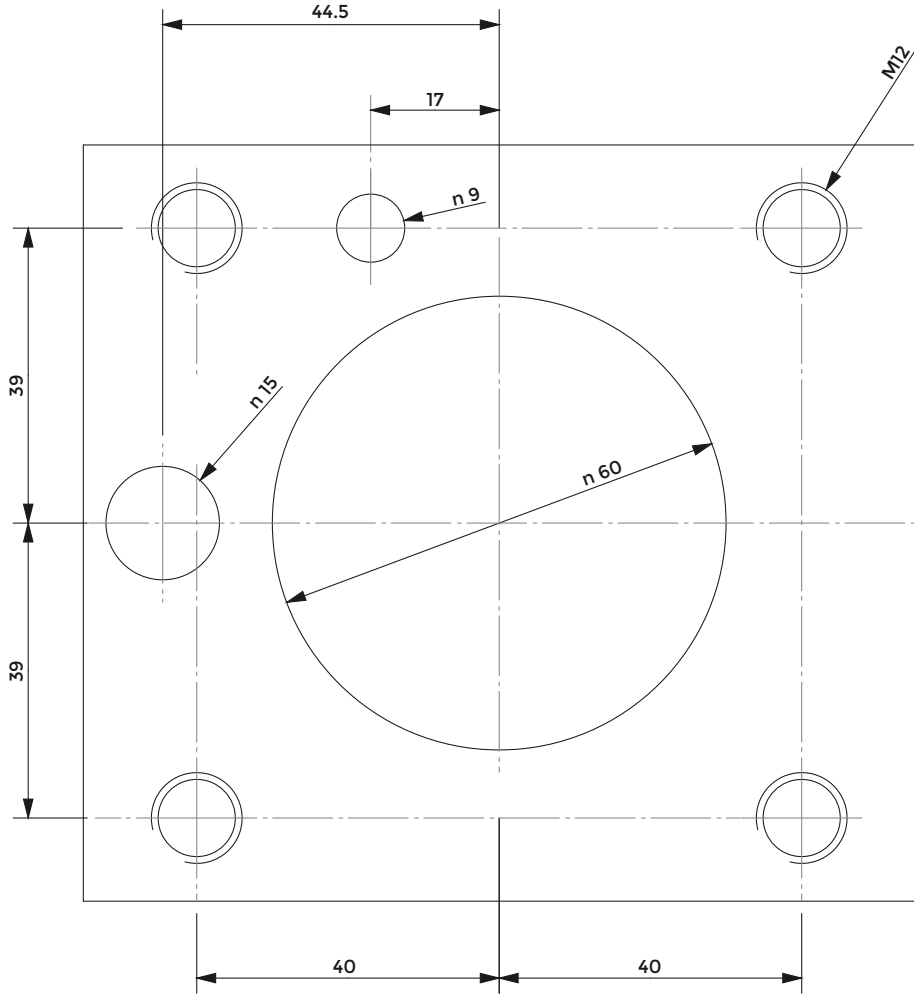


DOUBLE OKUMA BMT60

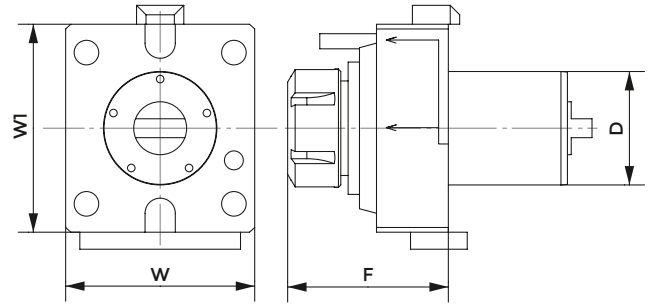
COD.	D	ER	INTERNAL COOLING	DIRECTION	A	B	F	T	W	L	MAX TORQUE (Nm)	MAX SPEED (Rpm)	RATIO	P Bar
124-06602	60	32	YES	DX/SX	70	103.8	91	38	94	49	70	6000	1:1	20

OKUMA - BMT60 - LB4000 EX (M)

CONNECTION TURRET OKUMA BMT60



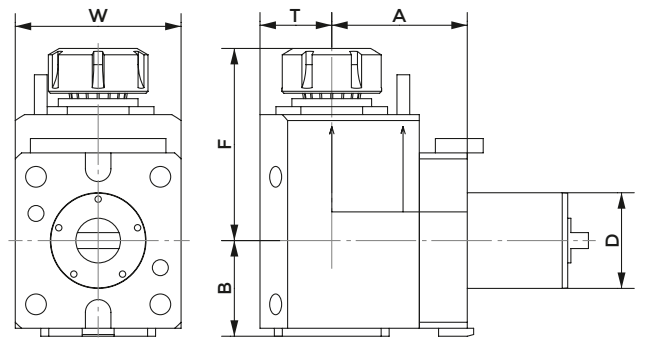
AXIAL DRILLING AND MILLING HEAD



OKUMA BMT60

COD.	D	ER	INTERNAL COOLING	A	B	F	MAX TORQUE (Nm)	MAX SPEED (Rpm)	RATIO	P Bar
124-06009	60	ER40	NO	82	100	110	80	6000	1:1	-
124-06010	60	ER40	YES	82	100	110	80	6000	1:1	20

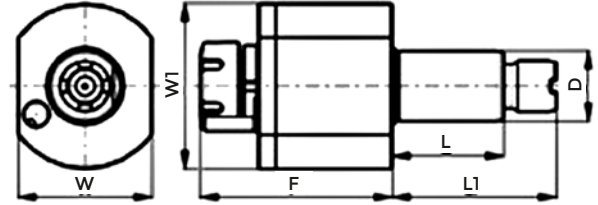
RADIAL DRILLING AND MILLING HEAD



OKUMA BMT60

COD.	D	ER	INTERNAL COOLING	DIRECTION	A	B	F	T	W	MAX TORQUE (Nm)	MAX SPEED (Rpm)	RATIO	P Bar
124-06011	60	ER40	NO	DX/SX	85	64	121	44	100	80	6000	1:1	-
124-06012	60	ER40	YES	DX/SX	85	64	121	44	100	80	6000	1:1	20
124-06014	60	ER40	YES	DX/SX	85	64	121	44	100	80	6000	1:1	80

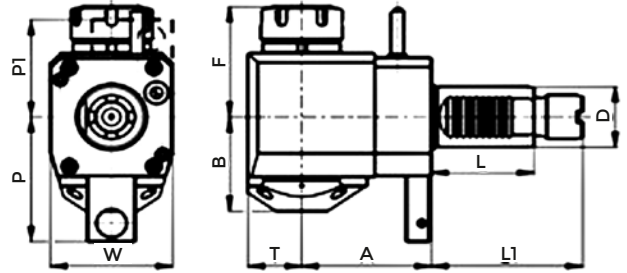
AXIAL DRILLING AND MILLING HEAD



STEPPED - OKUMA

COD.	D	ER	INTERNAL COOLING	F	L	L1	W	W1	MAXTORQUE (Nm)	MAX SPEED (Rpm)	RATIO	P Bar
116-54066	30	ER25	YES	88,5	55	69	67	67	28	6000	1:1	80
116-43031	30	ER25	NO	87	55	69	64	68	28	6000	1:1	-
116-43032	30	ER25	YES	87	55	69	64	68	28	6000	1:1	20
116-44098	40	ER25	NO	105	63	93	80	86	50	6000	1:1	-
116-54090	40	ER32	YES	93,5	63	93	79	79	50	6000	1:1	80
116-54001	40	ER32	NO	108	63	93	80	86	50	6000	1:1	-
116-54002	40	ER32	YES	108	63	93	80	86	50	6000	1:1	20
116-54005	40	ER32	NO	108	63	101	80	86	50	6000	1:1	-
116-54006	40	ER32	YES	108	63	101	80	86	50	6000	1:1	20
116-54119	50	ER32	YES	114	71	106	88	88	80	6000	1:1	80
116-54120	50	ER40	NO	116	71	106	88	88	80	6000	1:1	-

RADIAL DRILLING AND MILLING HEAD

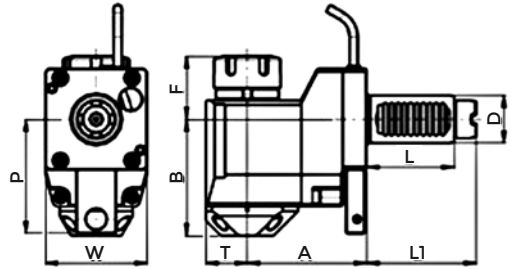


STEPPED - OKUMA

COD.	D	ER	INTERNAL COOLING	DIRECTION	A	B	F	L	L1	P	T	W	P Bar
116-43033	30	ER25	NO	DX	85	48	63	55	69	-	29	64	-
116-43033L	30	ER25	NO	SX	85	48	63	55	69	-	29	64	-
116-43035	30	ER25	NO	SX	55	48	63	55	69	72	29	64	-
116-43036	30	ER25	YES	SX	55	51	63	55	69	72	29	64	20
116-54007	40	ER25	NO	SX	80	59	70	63	93	82	36	75	-
116-54009	40	ER32	NO	SX	80	59	74	63	93	82	36	75	-
116-54010	40	ER32	YES	SX	80	62	74	63	93	82	36	75	20
116-54014	40	ER32	YES	SX	80	62	74	63	101	82	36	75	20
116-54017	40	ER32	NO	DX	80	59	74	63	93	-	36	75	-
116-54018	40	ER32	YES	DX	80	62	74	63	93	-	36	75	20
116-54104	40	ER32	YES	SX	67	62	91	63	93	82	36	75	20
116-54106	40	ER32	YES	SX	80	62	91	63	93	82	36	75	20
116-54103	40	ER32	NO	SX	80	59	75	63	101	82	36	75	-
116-54127	50	ER32	YES	SX	110	64	117	71	106	102	42	88	20
116-54128	50	ER40	NO	SX	110	64	119	71	106	102	42	88	-
116-54129	50	ER40	YES	SX	110	64	119	71	106	102	42	88	20

ON REQUEST AVAILABLE INTERNAL COOLANT 80 BAR

OFFSET RADIAL DRILLING AND MILLING HEAD

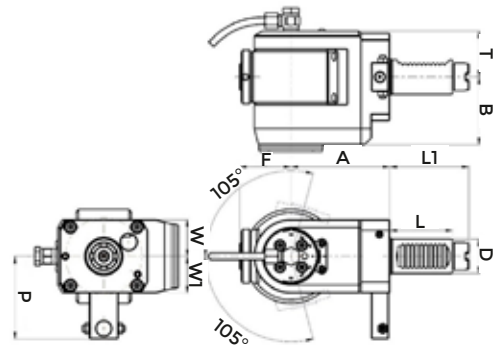


STEPPED - OKUMA

COD.	D	ER	INTERNAL COOLING	DIRECTION	A	B	F	L	L1	P	T	W	MAX TORQUE (Nm)	MAX SPEED (Rpm)	RATIO	P Bar
116-48002	40	ER25	YES	SX	120	95	37	63	104,85	82	36	75	50	6000	1:1	20
116-48004	40	ER32	YES	SX	120	95	41	63	104,85	82	36	75	50	6000	1:1	20

ON REQUEST AVAILABLE INTERNAL COOLANT 80 BAR

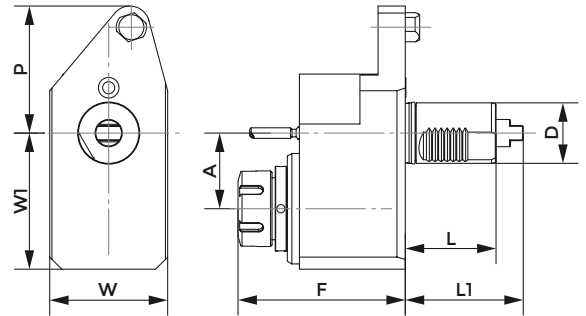
AXIAL - RADIAL DRILLING AND MILLING HEAD



STEPPED - OKUMA

COD.	D	ER	INTERNAL COOLING	DIRECTION	A	B	F	L	P	T	W	W1	MAX TORQUE (Nm)	MAX SPEED (Rpm)	RATIO	P Bar
116-54087	30	ER16	NO	SX	86	59	45	55	72	40	32	32	16	6000	1:1	-
116-54115	40	ER25	NO	SX	86	59	65	63	-	40	39	39	16	6000	1:1	-

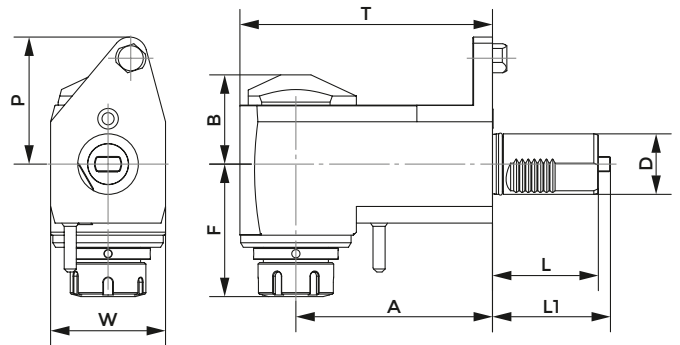
AXIAL DRILLING AND MILLING HEAD



MAZAK

COD.	D	ER	INTERNAL COOLING	F	A	L	L1	P	W	W1	MAX TORQUE (Nm)	MAX SPEED (Rpm)	RATIO	P Bar
116-54053	40	ER32	NO	110,6	50	60	61	84	78	90	50	6000	1:1	-

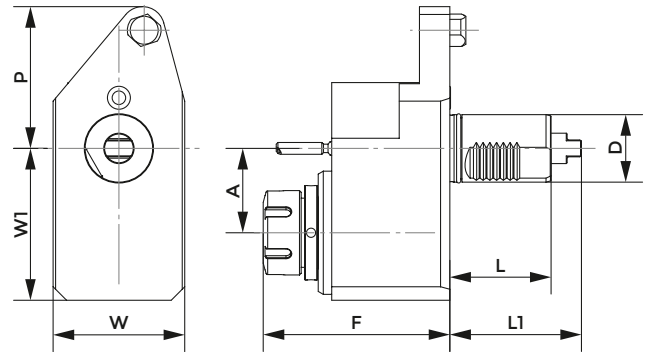
RADIAL DRILLING AND MILLING HEAD



MAZAK

COD.	D	ER	INTERNAL COOLING	DIRECTION	A	B	F	L	L1	P	T	W	MAX TORQUE (Nm)	MAX SPEED (Rpm)	RATIO	P Bar
116-54049	40	ER32	NO	DX	100	59	87,6	60	61	79	137	76	50	6000	1:1	-

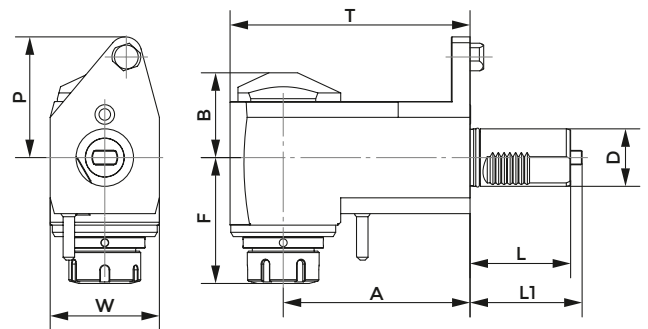
AXIAL DRILLING AND MILLING HEAD



MAZAK

COD.	D	ER	INTERNAL COOLING	F	A	L	L1	P	W	W1	MAX TORQUE (Nm)	MAX SPEED (Rpm)	RATIO	P Bar
116-54019	40	ER32	NO	110,6	50	60	78	84	78	90	50	6000	1:1	-
116-54044	40	ER32	YES	110,6	50	60	78	84	78	90	50	6000	1:1	20

RADIAL DRILLING AND MILLING HEAD

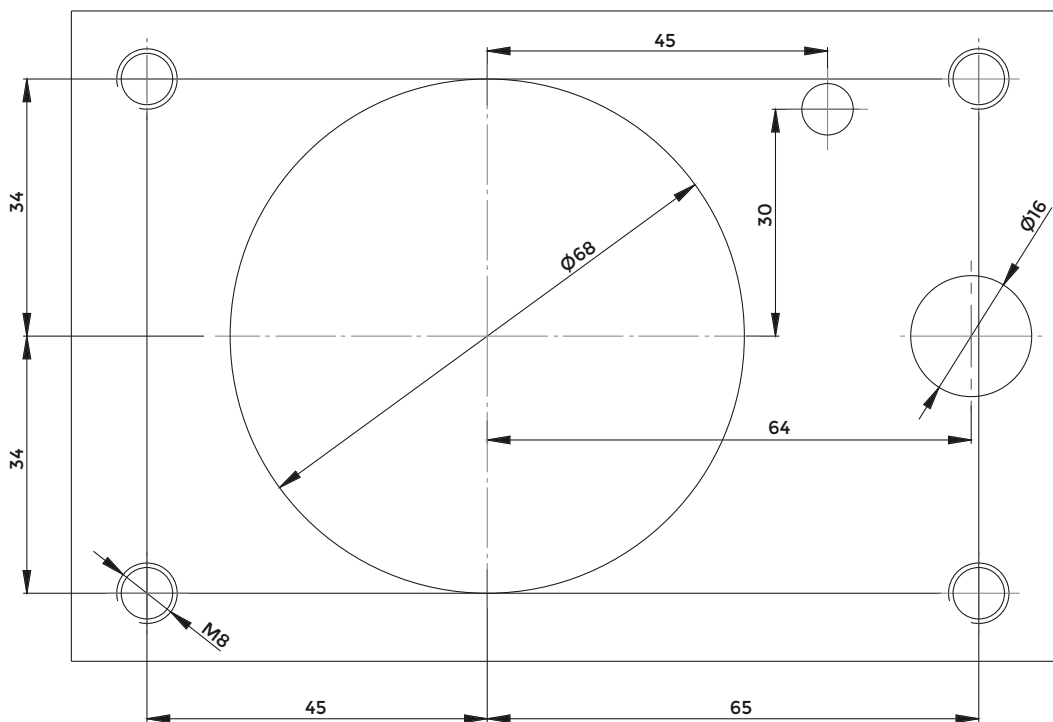


MAZAK

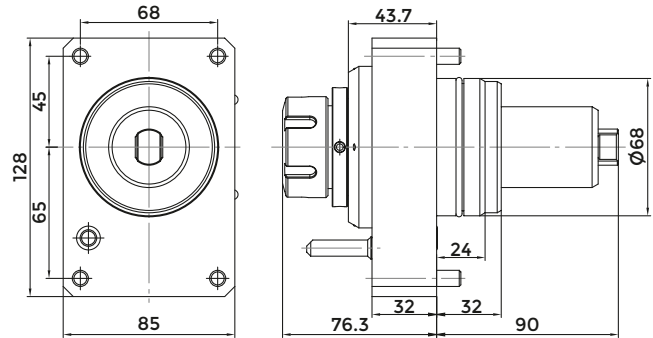
COD.	D	ER	INTERNAL COOLING	DIRECTION	A	B	F	L	L1	P	T	W	MAX TORQUE (Nm)	MAX SPEED (Rpm)	RATIO	P Bar
116-54020	40	ER32	NO	DX	130	62	87,6	70	78	84	167	76	50	6000	1:1	-
116-54040	40	ER32	NO	SX	130	62	87,6	70	78	84	167	76	50	6000	1:1	-
116-54041	40	ER32	YES	DX	130	62	87,6	70	78	84	167	76	50	6000	1:1	20
116-54093	40	ER32	YES	DX	100	62	87,6	60	61	68	137	76	50	6000	1:1	20
116-54095	40	ER32	YES	SX	100	62	87,6	60	61	68	137	76	50	6000	1:1	-
116-54096	40	ER32	YES	DX	100	62	87,6	60	61	68	137	76	50	6000	1:1	80

MAZAK BMT68 - QTC/QTU 100-350 M/MY/MS/MSY - QT/QTS 100-250 M/MY/MS/MSY
QT 200-250 M/MY/MS/MSY (16D)

CONNECTION TURRET MAZAK BMT68



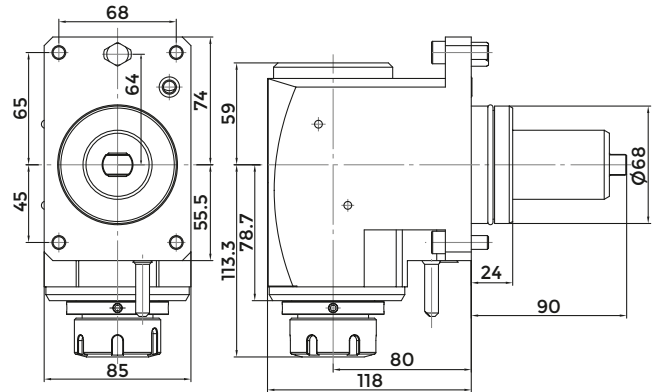
AXIAL DRILLING AND MILLING HEAD



MAZAK BMT68

COD.	ER	MAX SPEED (Rpm)	RATIO	MAX TORQUE (Nm)	INTERNAL COOLING	P Bar
124-06805	ER32	12000	1:1	70	NO	-
124-06806	ER32	12000	1:1	70	YES	20

RADIAL DRILLING AND MILLING HEAD

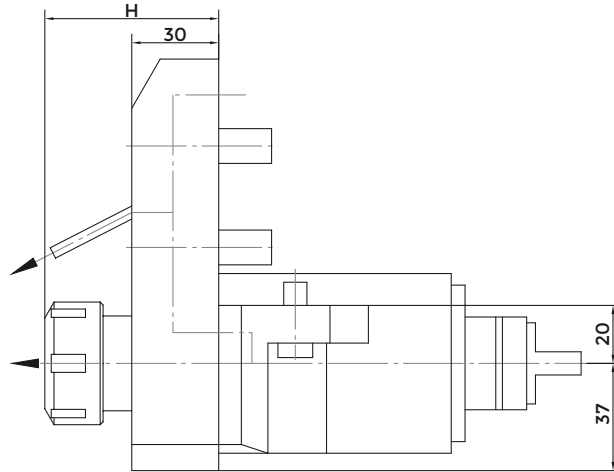


MAZAK BMT68

COD.	ER	MAX SPEED (Rpm)	RATIO	MAX TORQUE (Nm)	INTERNAL COOLING	P Bar
124-06807	ER32	6000	1:1	70	NO	-
124-06808	ER32	6000	1:1	70	YES	20
124-06809	ER32	6000	1:1	70	YES	80

DMG MORI SEIKI / CMZ - CL 200/203 - SL 20/25 - SL 203/204/250/253 - SL 254 (MC,SMC)/2500Y
 SL 203MC - SL 253MC - ZL 200MC - ZL 250SMC - SL 204SMC - SL 300MC - TBI 520 - TL 20/25 - TC 15/20/25/30/35
 TA 15M/Y/MS/MY/YS - TA 20M/Y/MS/MY/YS - TA 25M/Y/MS/MY/YS - TA 30M/Y/MS/MY/YS - TD 15/20/25/30/35/45
 TD 55M/Y/MS/MY/YS

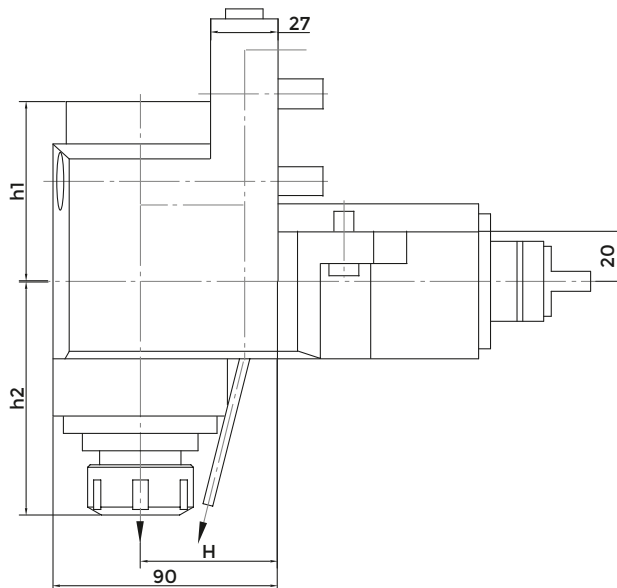
AXIAL DRILLING AND MILLING HEAD



DMG MORI SEIKI CMZ

COD.	ER	H	MAX SPEED (Rpm)	RATIO	MAX TORQUE (Nm)	INTERNAL COOLING	P Bar
124-00001	ER32	55.5-60	6000	1:1	70	NO	-
124-00002	ER32	55.5-60	6000	1:1	70	YES	80

RADIAL DRILLING AND MILLING HEAD

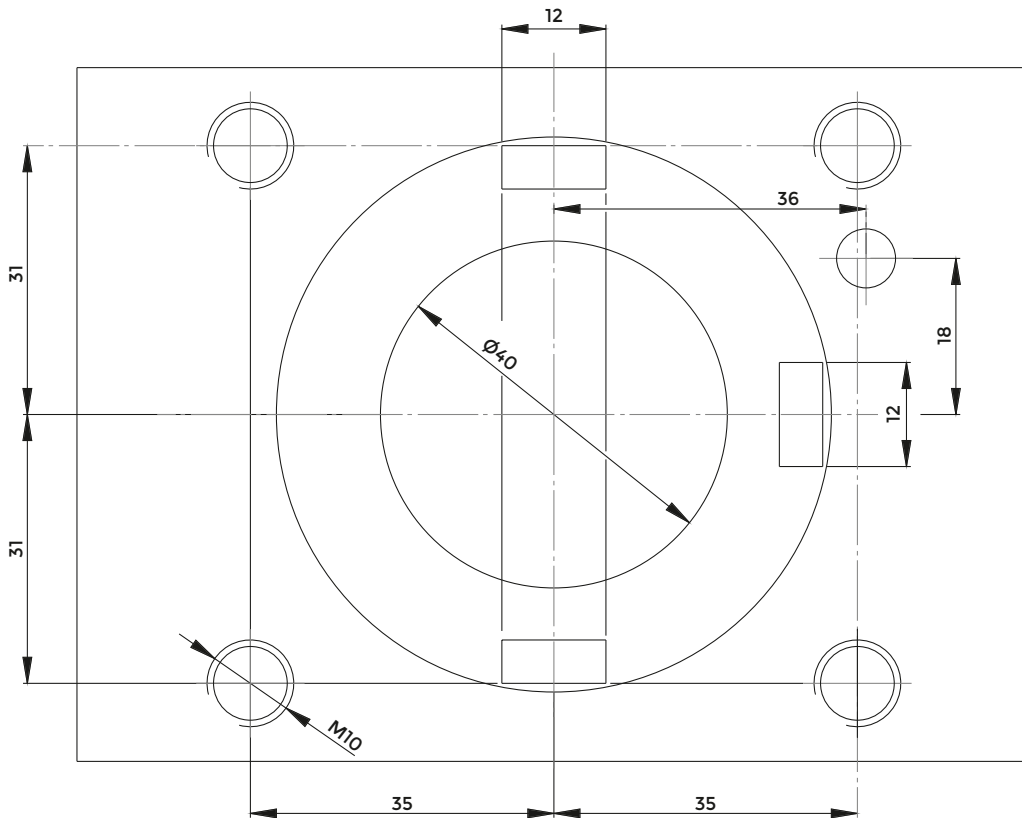


DMG MORI SEIKI CMZ

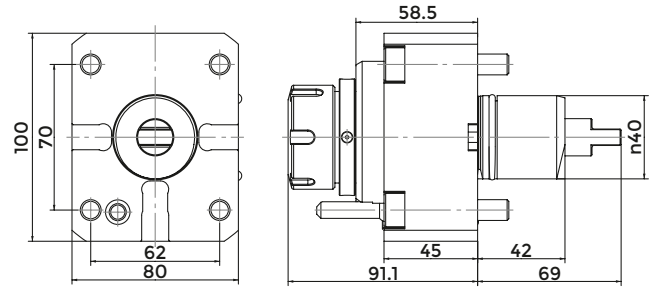
COD.	ER	H	h1	h2	MAX SPEED (Rpm)	RATIO	MAX TORQUE (Nm)	INTERNAL COOLING	P Bar
124-00003	ER32	55	57	89-93.5	6000	1:1	70	NO	-
124-00004	ER32	55	72	89-93.5	6000	1:1	70	YES	80

DMG MORI SEIKI BMT40 - NZ 1500/2000/3100 - NZ/NTZ 1000/2000/3000/3100/3150/3200
 NZ/NZX 2000/2500 (16 station turret) - NL/NLX 1500/2000/2500 (20 station turret) - DURATURN 2050/2550 MC
 LTX310ECO-BMT

CONNECTION TURRET DMG MORI SEIKI BMT40



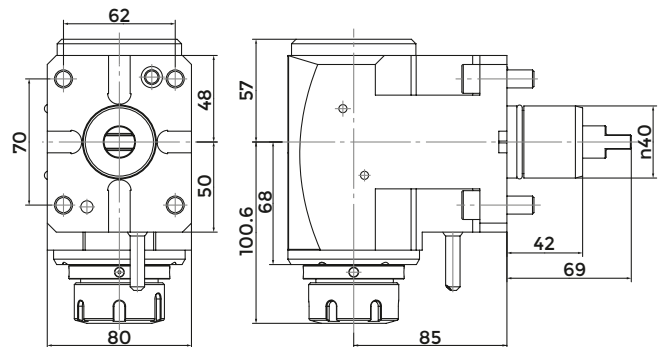
AXIAL DRILLING AND MILLING HEAD



DMG MORI BMT40

COD.	ER	MAX SPEED (Rpm)	RATIO	MAX TORQUE (Nm)	INTERNAL COOLING	P Bar
124-04005	ER32	12000	1:1	50	NO	-
124-04006	ER32	12000	1:1	50	YES	20

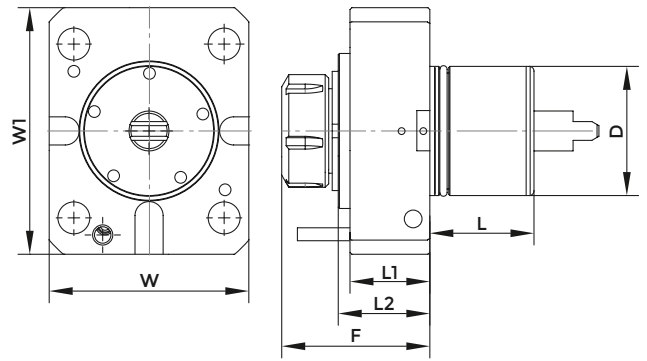
RADIAL DRILLING AND MILLING HEAD



DMG MORI BMT40

COD.	ER	MAX SPEED (Rpm)	RATIO	MAX TORQUE (Nm)	INTERNAL COOLING	P Bar
124-04007	ER32	6000	1:1	50	NO	-
124-04008	ER32	6000	1:1	50	YES	20

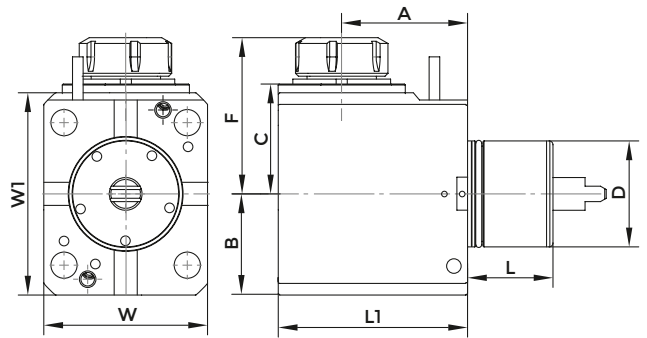
AXIAL DRILLING AND MILLING HEAD



MORI SEIKI BMT60

COD.	ER	D	F	L	L1	L2	W	W1	MAX TORQUE (Nm)	MAX SPEED (Rpm)	RATIO	INTERNAL COOLING	P Bar
124-06001	ER32	60	89	53	48,5	58	108	130	70	6000	1:1	NO	-
124-06003	ER32	60	89	53	48,5	58	108	130	70	6000	1:1	YES	20

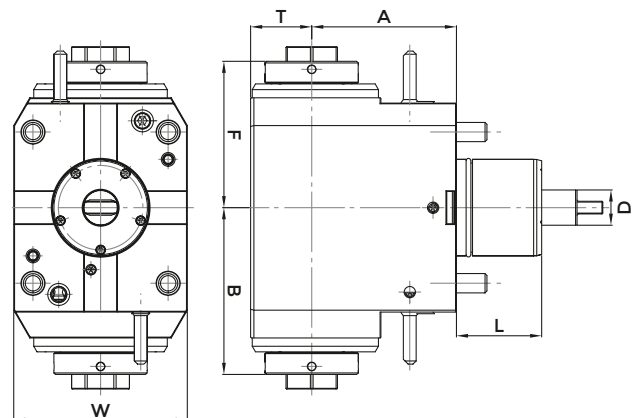
RADIAL DRILLING AND MILLING HEAD



MORI SEIKI BMT60

COD.	ER	D	F	L	L1	A	B	C	W	W1	MAX TORQUE (Nm)	MAX SPEED (Rpm)	RATIO	INTERNAL COOLING	P Bar
124-06002	ER32	60	107	53	128	90	65	78	108	130	70	6000	1:1	NO	-
124-06004	ER32	60	107	53	128	90	65	78	108	130	70	6000	1:1	YES	20

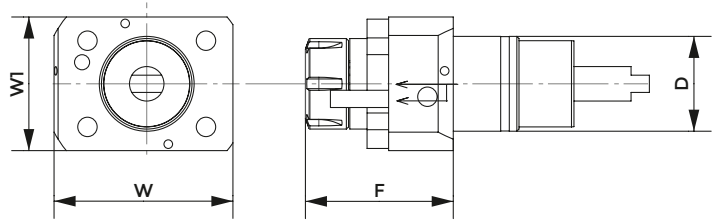
DOUBLE RADIAL DRILLING AND MILLING HEAD WITH INTERNAL NUT



DOUBLE MORI SEIKI

COD.	D	ER	INTERNAL COOLING	DIRECTION	A	B	F	T	W	L	MAX TORQUE (Nm)	MAX SPEED (Rpm)	RATIO	P Bar
124-06603	60	32	NO	DX/SX	90	103.8	91	38	108	53	70	6000	1:1	-

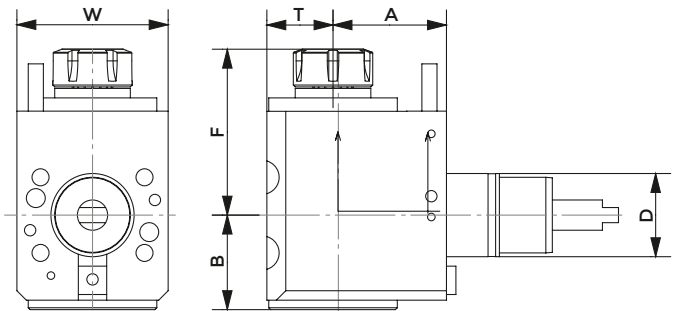
AXIAL DRILLING AND MILLING HEAD



NAKAMURA - TOME

COD.	D	ER	INTERNAL COOLING	F	W	W1	MAX TORQUE (Nm)	MAX SPEED (Rpm)	RATIO	P Bar
124-04402	44	ER25	YES	68.6	83	62	40	6000	1:1	20

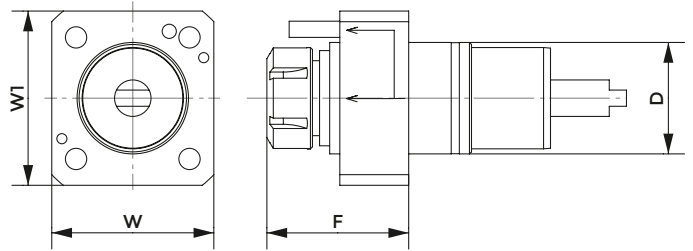
RADIAL DRILLING AND MILLING HEAD



NAKAMURA - TOME

COD.	D	ER	INTERNAL COOLING	DIRECTION	A	B	F	T	W	MAX TORQUE (Nm)	MAX SPEED (Rpm)	RATIO	P Bar
124-04403	44	ER25	NO	DX/SX	60	50,3	87,8	35	80	28	6000	1:1	-
124-04404	44	ER25	YES	DX/SX	60	50,3	87,8	35	80	28	6000	1:1	20
124-04405	44	ER25	NO	DX/SX	75	50	89	35	78	28	6000	1:1	-
124-04406	44	ER25	YES	DX/SX	75	50	89	35	78	28	6000	1:1	80

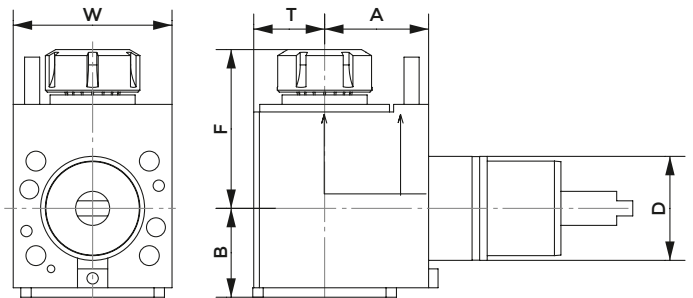
AXIAL DRILLING AND MILLING HEAD



NAKAMURA - TOME

COD.	D	ER	INTERNAL COOLING	F	W	W1	MAX TORQUE (Nm)	MAX SPEED (Rpm)	RATIO	P Bar
124-05507	55	ER25	NO	78	80	86	50	6000	1:1	-
124-05508	55	ER25	YES	78	80	86	50	6000	1:1	20
124-05529	55	ER32	NO	78	80	86	50	6000	1:1	-

RADIAL DRILLING AND MILLING HEAD

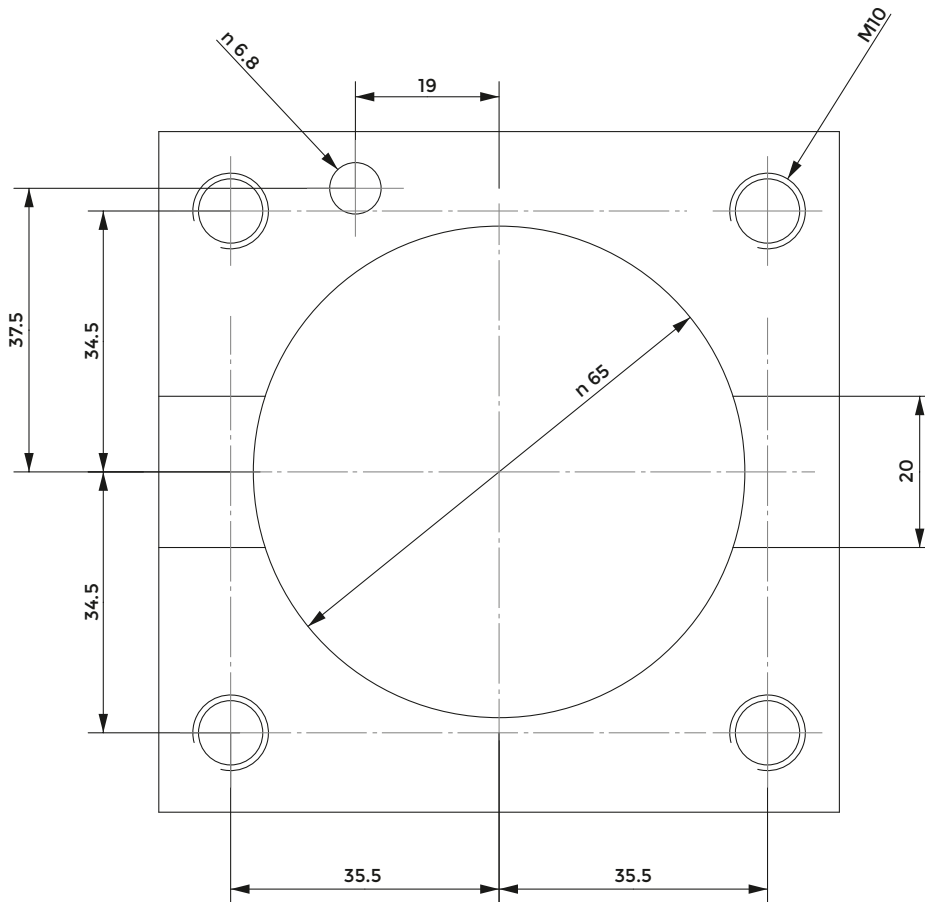


NAKAMURA - TOME

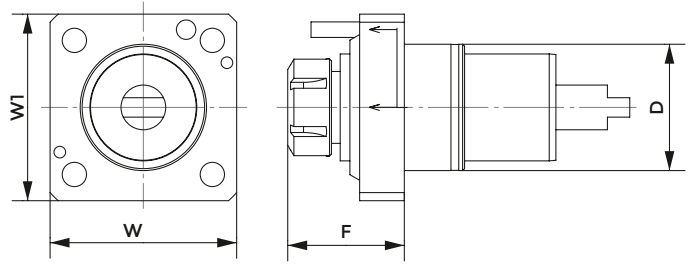
COD.	D	ER	INTERNAL COOLING	DIRECTION	A	B	F	T	W	MAX TORQUE (Nm)	MAX SPEED (Rpm)	RATIO	P Bar
124-05509	55	ER25	NO	DX/SX	55	50,3	74,8	35	84	28	6000	1:1	-
124-05510	55	ER25	YES	DX/SX	55	50,3	74,8	35	84	28	6000	1:1	20
124-05517	55	ER25	YES	DX/SX	55	50,3	74,8	35	84	28	6000	1:1	80

NAKAMURA - TOME - BMT65 - WT300 - SC300 - TW20 - TMC-200M - TMC-300M - SUPER NTX
TW20M /MY/MM/MMY/MMYY (12 stations) - TW30M/MY/MM/MMY/MMYY (16 stations)

CONNECTION TURRET NAKAMURA - TOME - BMT65



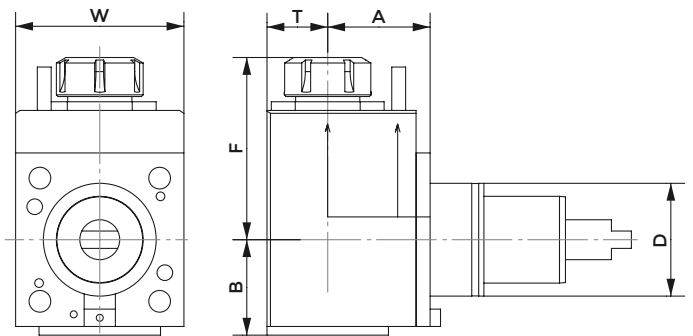
AXIAL DRILLING AND MILLING HEAD



NAKAMURA - TOME

COD.	D	ER	INTERNAL COOLING	F	W	W1	MAX TORQUE (Nm)	MAX SPEED (Rpm)	RATIO	P Bar
124-06504	65	ER32	NO	75	96	96	70	6000	1:1	-
124-06505	65	ER32	YES	75	96	96	70	6000	1:1	20

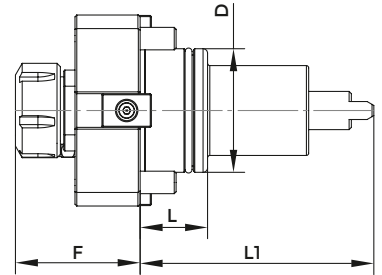
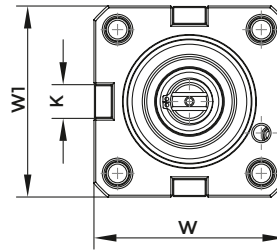
RADIAL DRILLING AND MILLING HEAD



NAKAMURA - TOME

COD.	D	ER	INTERNAL COOLING	DIRECTION	A	B	F	T	W	MAX TORQUE (Nm)	MAX SPEED (Rpm)	RATIO	P Bar
124-06506	65	ER32	NO	DX/SX	65	59	110	38	96	70	6000	1:1	-
124-06507	65	ER32	YES	DX/SX	65	59	110	38	96	70	6000	1:1	20

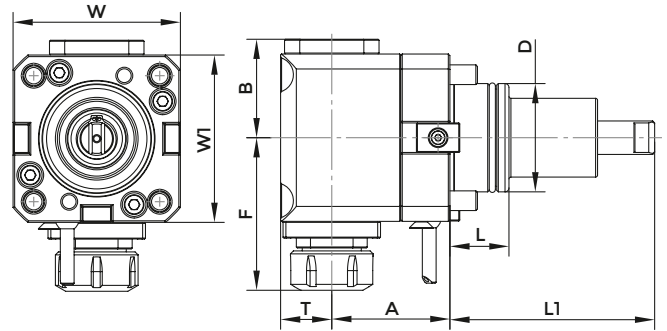
AXIAL DRILLING AND MILLING HEAD



BMT

COD.	BMT	ER	D	F	K	L	L1	W	W1	MAX SPEED (Rpm)	RATIO	MAX TORQUE (Nm)	INTERNAL COOLING	P Bar
124-04501	45	ER25	45	67,6	15	40	84	78,5	75	6000	1:1	50	NO	-
124-04502	45	ER25	45	67,6	15	40	84	78,5	75	6000	1:1	50	YES	20
124-05501	55	ER25	55	71	15	30	104	85	85	6000	1:1	50	NO	-
124-06509	55	ER25	55	71	15	30	104	85	85	6000	1:1	50	YES	20
124-06518	55	ER32	55	71	15	30	104	85	85	6000	1:1	50	YES	20
124-05525	55	ER32	55	73	15	30	104	87	85	6000	1:1	50	NO	-
124-06501	65	ER32	65	75	18	32	112	94	94	6000	1:1	70	NO	-
124-06508	65	ER32	65	75	18	32	112	94	94	6000	1:1	70	YES	20
124-07506	75	ER32	75	67	25	43	110	112	112	6000	1:1	80	NO	-
124-07507	75	ER40	75	67	25	43	110	112	112	6000	1:1	80	NO	-

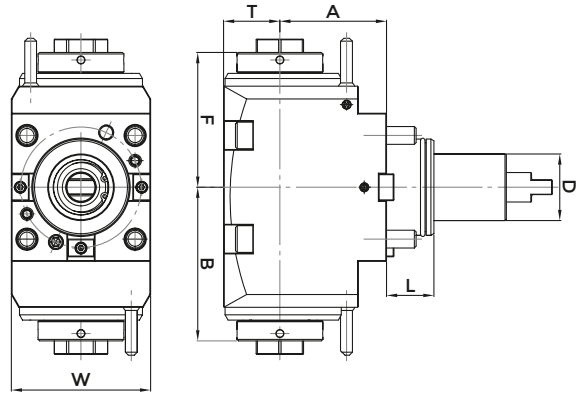
RADIAL DRILLING AND MILLING HEAD



BMT

COD.	BMT	ER	D	A	B	F	L	L1	T	W	W1	MAX SPEED (Rpm)	RATIO	MAX TORQUE (Nm)	INTERNAL COOLING	P Bar
124-04503	45	ER25	45	65	57	97,6	40	84	36,5	75	83	6000	1:1	50	NO	-
124-04504	45	ER25	45	65	57	97,6	40	84	36,5	75	83	6000	1:1	50	YES	20
124-04505	45	ER25	45	65	57	97,6	40	84	36,5	75	83	6000	1:1	50	NO	-
124-05502	55	ER25	55	70	57	98	30	104	36,5	85	98	6000	1:1	50	NO	-
124-06510	55	ER25	55	70	57	98	30	104	36,5	85	98	6000	1:1	50	YES	20
124-05511	55	ER25	55	85	57	98	30	104	36,5	85	98	6000	1:1	50	NO	-
124-05512	55	ER25	55	85	57	98	30	104	36,5	85	98	6000	1:1	50	YES	20
124-06520	55	ER25	55	85	57	98	30	104	36,5	85	98	6000	1:1	50	YES	80
124-05513	55	ER32	55	85	57	101	30	104	36,5	85	98	6000	1:1	50	NO	-
124-05514	55	ER32	55	85	57	101	30	104	36,5	85	98	6000	1:1	50	YES	20
124-05526	55	ER32	55	85	57	101	30	104	36,5	85	108	6000	1:1	50	NO	-
124-05527	55	ER32	55	85	57	101	30	104	36,5	85	108	6000	1:1	50	YES	20
124-05528	55	ER32	55	85	68	101	30	104	36,5	85	108	6000	1:1	50	YES	80
124-06502	65	ER32	65	72	59	111	32	112	38	94	100	6000	1:1	70	NO	-
124-06512	65	ER32	65	72	59	111	32	112	38	94	100	6000	1:1	70	YES	20
124-06521	65	ER32	65	72	59	111	32	112	38	94	100	6000	1:1	70	YES	80
124-06513	65	ER32	65	100	59	111	32	112	38	94	100	6000	1:1	70	NO	-
124-06514	65	ER32	65	100	59	111	32	112	38	94	100	6000	1:1	70	YES	20
124-07508	75	ER32	75	100	76	104	43	90	44	112	110	6000	1:1	80	NO	-
124-07509	75	ER32	75	100	76	104	43	90	44	112	110	6000	1:1	80	YES	20
124-07510	75	ER32	75	100	76	104	43	110	44	112	110	6000	1:1	80	NO	-
124-07511	75	ER32	75	100	76	104	43	110	44	112	110	6000	1:1	80	YES	20
124-07512	75	ER40	75	100	76	104	43	90	44	112	110	6000	1:1	80	NO	-
124-07513	75	ER40	75	100	76	104	43	90	44	112	110	6000	1:1	80	YES	20
124-07514	75	ER40	75	100	76	104	43	110	44	112	110	6000	1:1	80	NO	-
124-07515	75	ER40	75	100	76	104	43	110	44	112	110	6000	1:1	80	YES	20

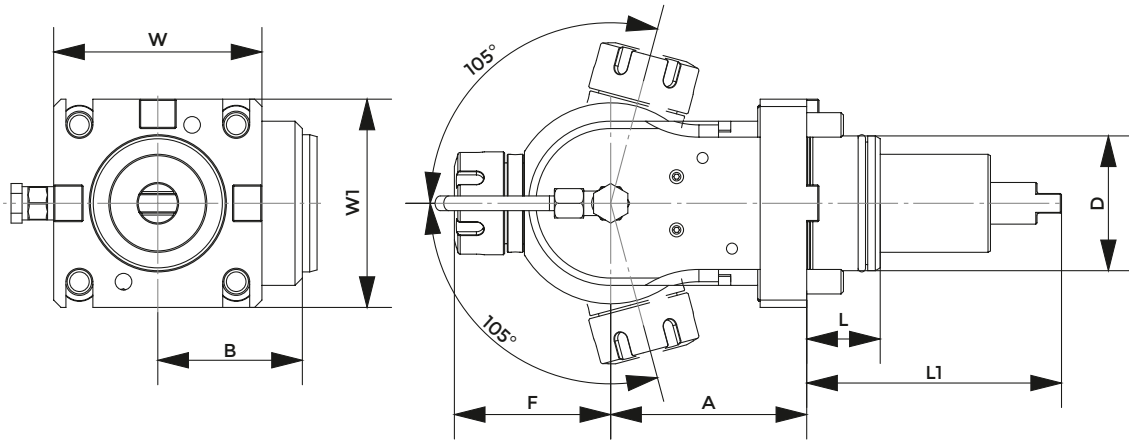
DOUBLE RADIAL DRILLING AND MILLING HEAD WITH INTERNAL NUT



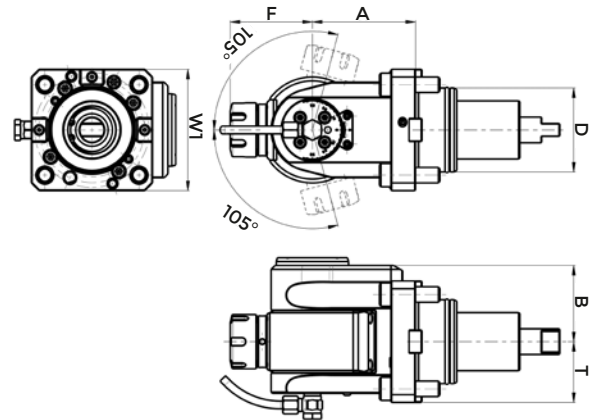
DOUBLE BMT

COD.	D	ER	INTERNAL COOLING	DIRECTION	A	B	F	T	W	L	MAX TORQUE (Nm)	MAX SPEED (Rpm)	RATIO	P Bar
124-06605	65	32	NO	DX/SX	72	104	91	38	94	32	70	6000	1:1	-
124-06606	65	32	YES	DX/SX	72	104	91	38	94	32	70	6000	1:1	20

DOOSAN - BMT



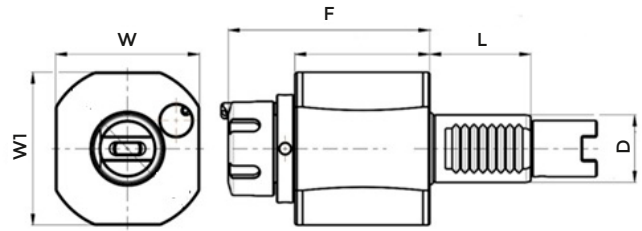
AXIAL - RADIAL DRILLING AND MILLING HEAD



BMT

COD.	BMT	ER	D	A	B	T	F	L	L1	W	W1	MAX SPEED (Rpm)	RATIO	MAX TORQUE (Nm)	INTERNAL COOLING	P Bar
124-04506	45	ER25	45	80	59	40	65	40	84	80	80	6000	1:1	16	NO	-
124-04507	45	ER25	45	80	59	40	65	40	84	80	80	6000	1:1	16	YES	20
124-05515	55	ER25	55	80	59	42,5	63,8	30	104	85	85	6000	1:1	16	NO	-
124-05516	55	ER25	55	80	59	42,5	63,8	30	104	85	85	6000	1:1	16	YES	20

AXIAL DRILLING AND MILLING HEAD INDEX/TRAUB



INDEX /TRAUB

COD.	D	ER	INTERNAL COOLING	F	L	W	W1	MAX TORQUE (Nm)	MAX SPEED (Rpm)	RATIO	P Bar
116-54061	30	ER25	NO	90	45	64	68	28	6000	1:1	-
116-54062	30	ER25	YES	90	45	64	68	28	6000	1:1	20
116-54063	40	ER32	NO	106	53	80	86	50	6000	1:1	-
116-54064	40	ER32	YES	106	53	80	86	50	6000	1:1	20