

# **VDI TOOLHOLDERS**

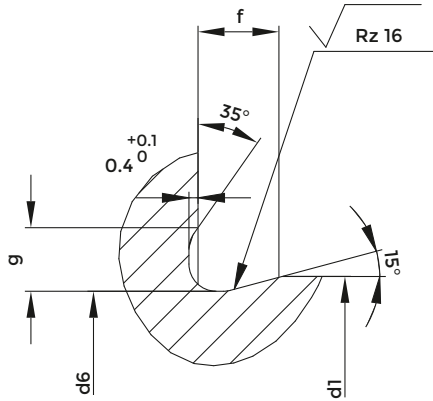
FOR CNC LATHES DIN 69880

---

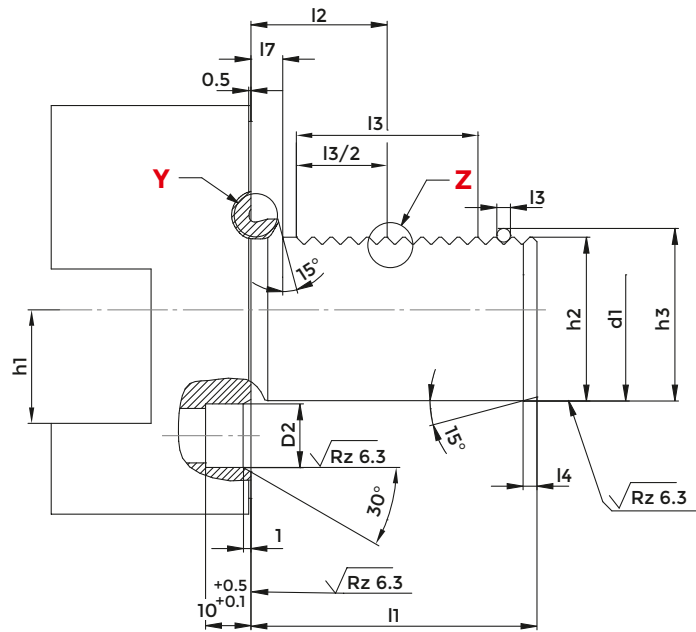
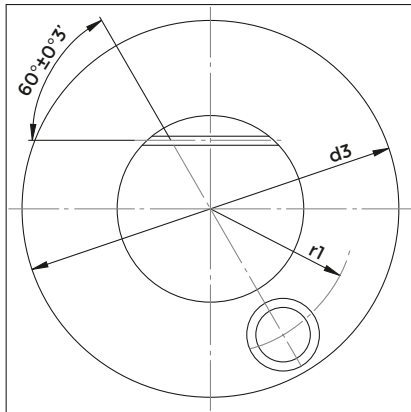
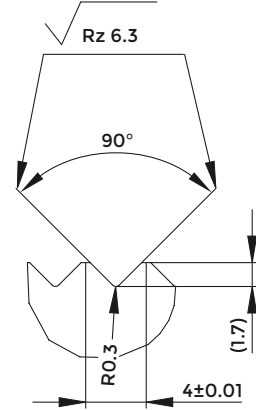


**TOOL HOLDER WITH PARALLEL SHANK,  
TECHNICAL SPECIFICATIONS**

**Detail Y**



**Detail Z**



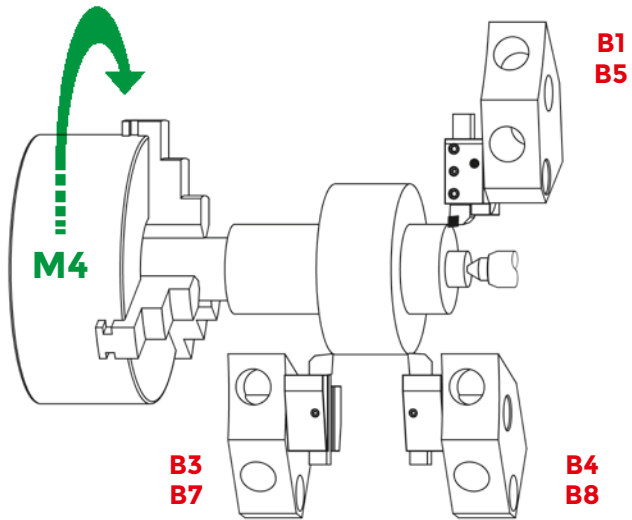
**DIN69880**

d1 h6	l1 ±0.3	D2	d3	d6 _0.1	f	g	h1 max.	h2 ±0.1	h3 ±0.1	l2 ±0.05	l3 min.	l4 +1	l7	r1 ±0.02	O-RING
16	32	8 H6	40	15.4	2.0	1.7	12	15	16.92	12.7	16	2	3.5	14.5	15x1,5
20	40	10 H6	50	19.1	2.4	2	16	18	19.92	21.7	24	2	7	18	18,77x1,78
25	48	10 H6	58	24.1	2.4	2	16	23.5	25.42	21.7	24	2	7	21	23,52x1,78
30	55	14 H8	68	29.1	2.4	2	20	27	28.92	29.7	40	2	7	25	28,3x1,78
40	63	14 H8	83	38.7	3.7	2.8	25	36	37.92	29.7	40	3	7	32	37,77x2,62
50	78	16 H8	98	48.7	3.7	2.8	32	45	46.92	35.7	48	3	8	37	47,29x2,62
60	94	16 H8	123	58.7	4.3	3.7	32	55	56.92	43.7	56	4	10	48	56,74x3,53
80	124	20 H8	158	78.7	4.3	3.7	40	72	73.92	59.7	80	4	10	65	75,79x3,53

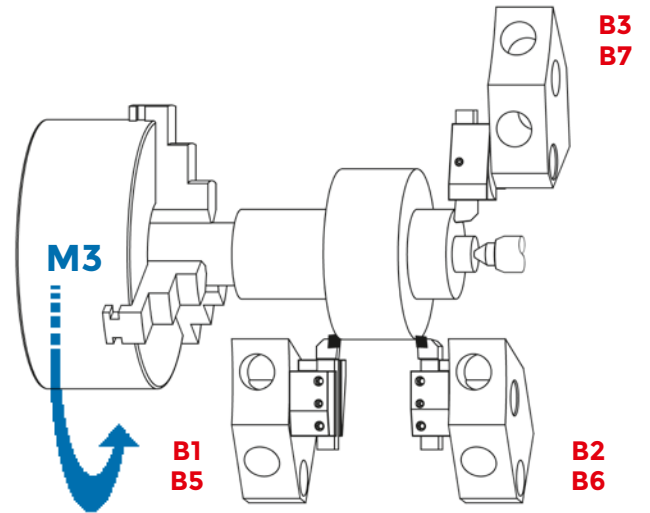
O-ring included in radial VDI

**USE OF RADIAL  
VDI TOOLHOLDERS**

**WITH M4 SPINDLE ROTATION**

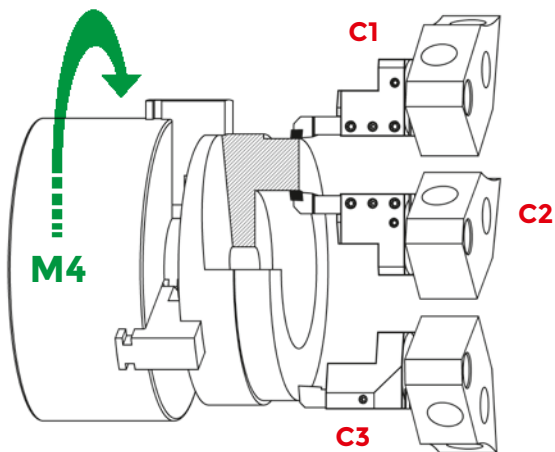


**WITH M3 SPINDLE ROTATION**

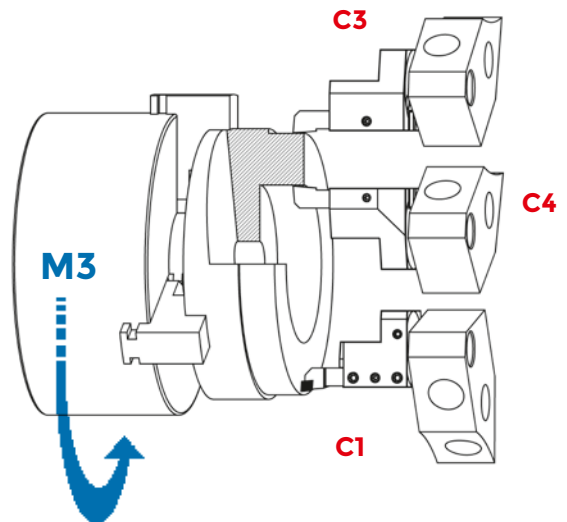


**USE OF AXIAL  
VDI TOOLHOLDERS**

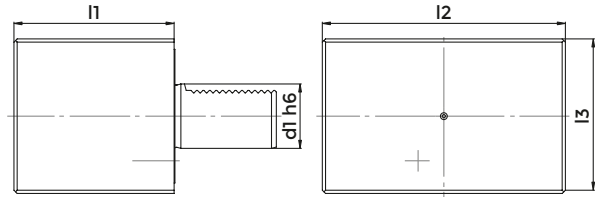
**WITH M4 SPINDLE ROTATION**



**WITH M3 SPINDLE ROTATION**



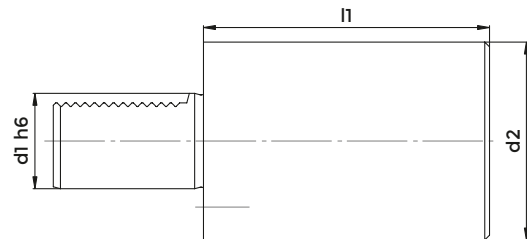
## RECTANGULAR BLANK FOR SPECIAL VERSIONS



### DIN 69880 - A1

COD.	d1	l1	l2	l3
A1-30x85	30	85	130	76
A1-40x100	40	100	151	96
A1-50x125	50	125	160	120
A1-60x160	60	160	165	125

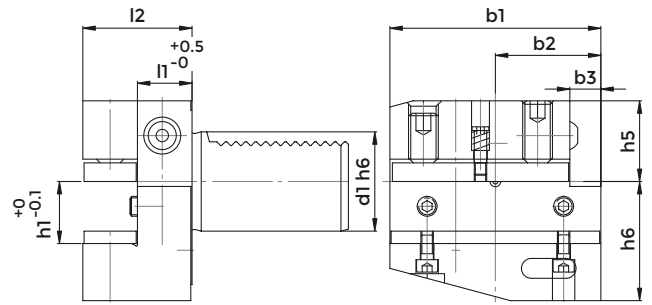
## ROUND BLANK FOR SPECIAL VERSIONS



### DIN 69880 - A2

COD.	d1	d2	l1
A2-16x60	16	40	60
A2-20x70	20	50	70
A2-25x200	25	58	200
A2-30x100	30	68	100
A2-30x240	30	68	240
A2-40x120	40	83	120
A2-40x320	40	83	320
A2-50x135	50	98	135
A2-50x400	50	98	400
A2-60x150	60	123	150
A2-60x480	60	123	480

## RADIAL HOLDER, RH, SHORT



### DIN 69880 - B1

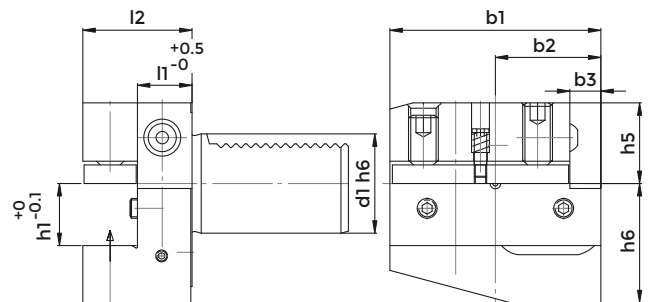
COD.	d1	b1	b2	b3	h1	h5	h6	l1	l2
B1-16x12x24	16	42	23	5	12	20	22	13	24
B1-20x16x30	20	55	30	7	16/12	25	30	16	30
B1-30x20x40	30	70	35	10	20/16	28	38	22	40
B1-30x20x60	30	70	35	10	20/16	28	38	42	60
B1-40x25x44	40	85	42.5	12.5	25/20	32.5	48	22	44
B1-50x32x55	50	100	50	16	32/25	35	60	30	55
B1-60x32x60	60	125	62.5	16	32/25	42.5	62.5	30	60

Spare parts p. 532

## RADIAL HOLDER, RH, SHORT



**IC VERSION**

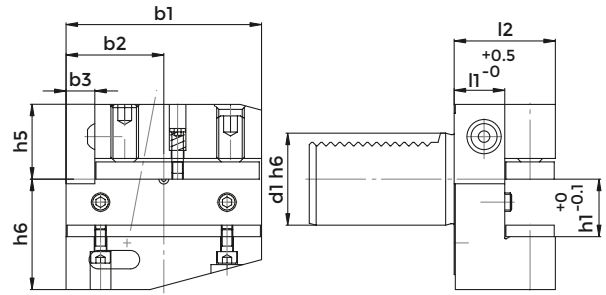


### DIN 69880 - B1

COD.	d1	b1	b2	b3	h1	h5	h6	l1	l2
B1-30x20x40-IC	30	70	35	10	20	28	38	22	40
B1-40x25x44-IC	40	85	42.5	12.5	25	32.5	48	22	44

Spare parts p. 532

**RADIAL HOLDER, LH, SHORT**



**DIN 69880 - B2**

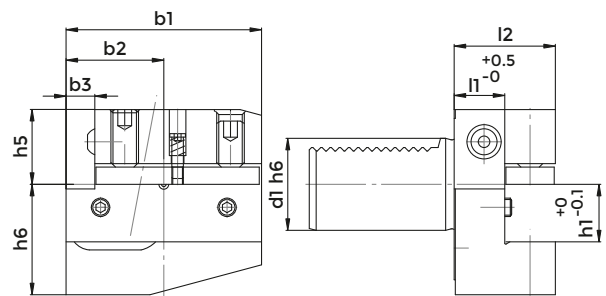
COD.	d1	b1	b2	b3	h1	h5	h6	l1	l2
B2-20x16x30	20	55	30	7	16/12	25	30	16	30
B2-30x20x40	30	70	35	10	20/16	28	38	22	40
B2-30x20x60	30	70	35	10	20/16	28	38	42	60
B2-40x25x44	40	85	42.5	12.5	25/20	32.5	48	22	44
B2-50x32x55	50	100	50	16	32/25	35	60	30	55
B2-60x32x60	60	125	62.5	16	32/25	42.5	62.5	30	60

Spare parts p. 532

**RADIAL HOLDER, LH, SHORT**



**IC VERSION** 

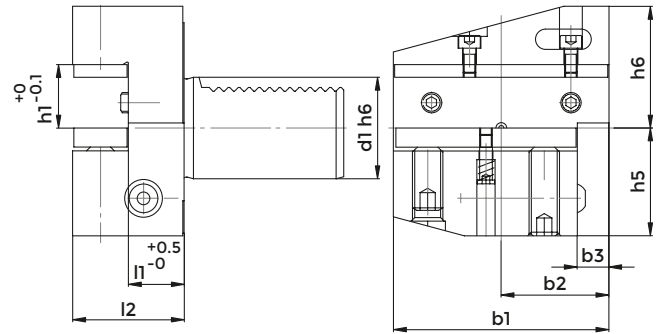


**DIN 69880 - B2**

COD.	d1	b1	b2	b3	h1	h5	h6	l1	l2
B2-30x20x40-IC	30	70	35	10	20	28	38	22	40
B2-40x25x44-IC	40	85	42.5	12.5	25	32.5	48	22	44

Spare parts p. 532

**RADIAL HOLDER, UPSIDE-DOWN, RH, SHORT**



**DIN 69880 - B3**

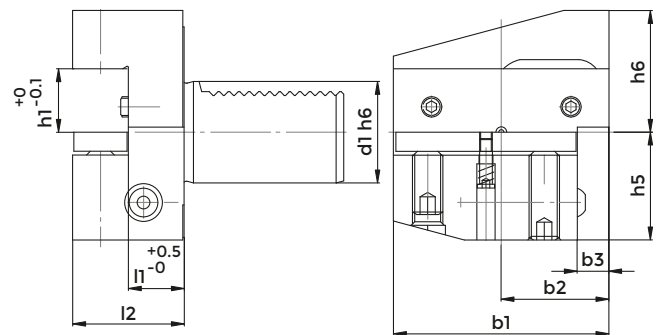
COD.	d1	b1	b2	b3	h1	h5	h6	l1	l2
B3-16x12x24	16	42	23	5	12	20	22	13	24
B3-20x16x30	20	55	30	7	16/12	25	30	16	30
B3-20x16x40	20	55	30	7	16/12	25	30	26	40
B3-30x20x40	30	70	35	10	20/16	35	38	22	40
B3-40x25x44	40	85	42.5	12.5	25/20	42.5	48	22	44
B3-50x32x55	50	100	50	16	32/25	50	60	30	55
B3-60x32x60	60	125	62.5	16	32/25	62.5	62.5	30	60

Spare parts p. 532

**RADIAL HOLDER, UPSIDE-DOWN, RH, SHORT**



**IC VERSION**

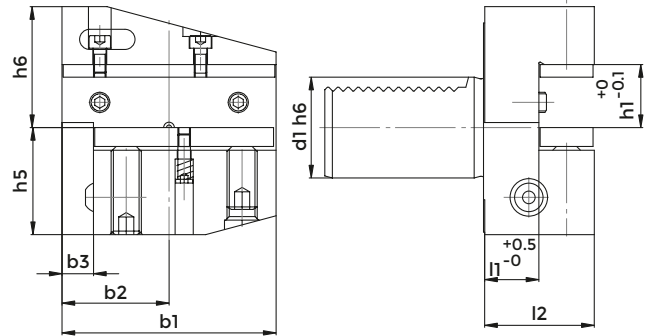


**DIN 69880 - B3**

COD.	d1	b1	b2	b3	h1	h5	h6	l1	l2
B3-30x20x40-IC	30	70	35	10	20	35	38	22	40
B3-40x25x44-IC	40	85	42.5	12.5	25	42.5	48	22	44

Spare parts p. 532

**RADIAL HOLDER, UPSIDE-DOWN, LH, SHORT**

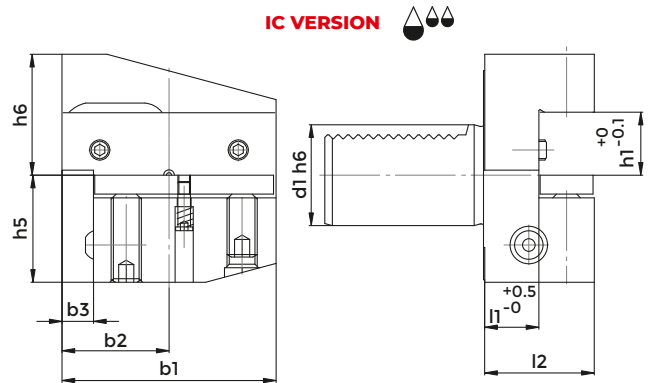


**DIN 69880 - B4**

COD.	d1	b1	b2	b3	h1	h5	h6	l1	l2
B4-30x20x40	30	70	35	10	20/16	35	38	22	40
B4-40x25x44	40	85	42.5	12.5	25/20	42.5	48	22	44
B4-50x32x55	50	100	50	16	32/25	50	60	30	55
B4-60x32x60	60	125	62.5	16	32/25	62.5	62.5	30	60

Spare parts p. 532

**RADIAL HOLDER, UPSIDE-DOWN, LH, SHORT**



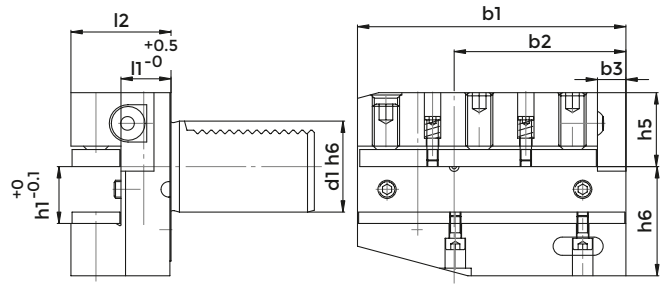
**DIN 69880 - B4**

COD.	d1	b1	b2	b3	h1	h5	h6	l1	l2
B4-30x20x40-IC	30	70	35	10	20	35	38	22	40
B4-40x25x44-IC	40	85	42.5	12.5	25	42.5	48	22	44

Spare parts p. 532



## RADIAL HOLDER, RH, LONG

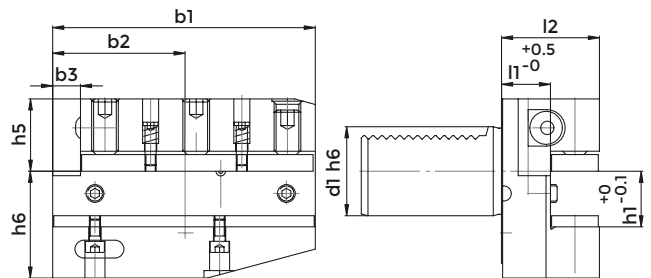


### DIN 69880 - B5

COD.	d1	b1	b2	b3	h1	h5	h6	l1	l2
B5-30x20x40	30	100	65	10	20/16	28	38	22	40
B5-40x25x44	40	118	75.5	12.5	25/20	32.5	48	22	44
B5-50x32x55	50	130	80	16	32/25	35	60	30	55
B5-60x32x60	60	145	82.5	16	32/25	42.5	62.5	30	60

Spare parts p. 533

## RADIAL HOLDER, LH, LONG

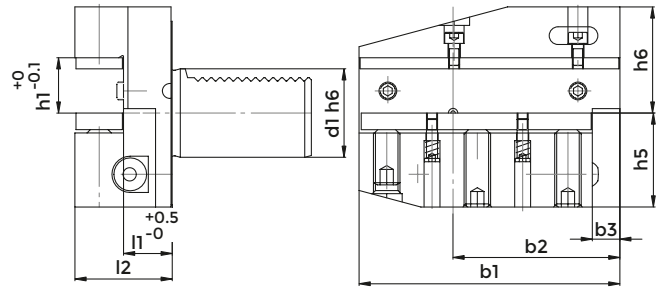


### DIN 69880 - B6

COD.	d1	b1	b2	b3	h1	h5	h6	l1	l2
B6-30x20x40	30	100	65	10	20/16	28	38	22	40
B6-40x25x44	40	118	75.5	12.5	25/20	32.5	48	22	44
B6-50x32x55	50	130	80	16	32/25	35	60	30	55
B6-60x32x60	60	145	82.5	16	32/25	42.5	62.5	30	60

Spare parts p. 533

**RADIAL HOLDER, UPSIDE-DOWN, RH, LONG**

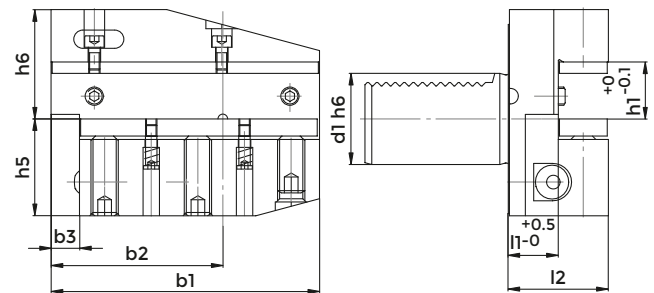


**DIN 69880 - B7**

COD.	d1	b1	b2	b3	h1	h5	h6	l1	l2
B7-30x20x40	30	100	65	10	20/16	35	38	22	40
B7-40x25x44	40	118	75.5	12.5	25/20	42.5	48	22	44
B7-50x32x55	50	130	80	16	32/25	50	60	30	55

Spare parts p. 533

**RADIAL HOLDER, UPSIDE-DOWN, LH, SHORT**

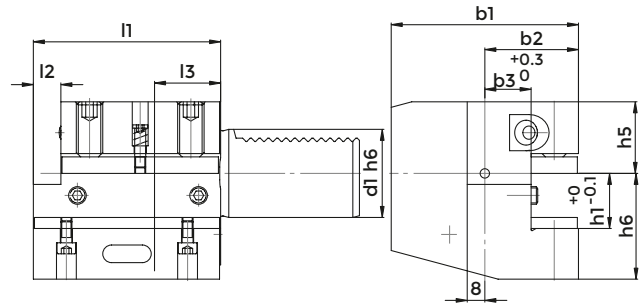


**DIN 69880 - B8**

COD.	d1	b1	b2	b3	h1	h5	h6	l1	l2
B8-30x20x40	30	100	65	10	20/16	35	38	22	40
B8-40x25x44	40	118	75.5	12.5	25/20	42.5	48	22	44
B8-50x32x55	50	130	80	16	32/25	50	60	30	55

Spare parts p. 533

**AXIAL HOLDER, RH**



**DIN 69880 - C1**

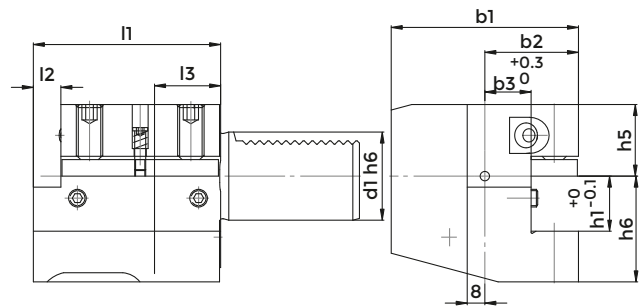
COD.	d1	b1	b2	b3	h1	h5	h6	l1	l2	l3
C1-20x16x50	20	65	40	26	16/12	25	30	50	-	30
C1-30x20x70	30	70	35	17	20/16	28	38	70	10	30
C1-40x25x85	40	85	42.5	21	25/20	32.5	48	85	12.5	30
C1-50x32x100	50	100	50	26	32/25	35	60	100	16	40
C1-60x32x125	60	125	62.5	33	32/25	42.5	62.5	125	16	40

Spare parts p. 534

**AXIAL HOLDER, RH**



**IC VERSION**

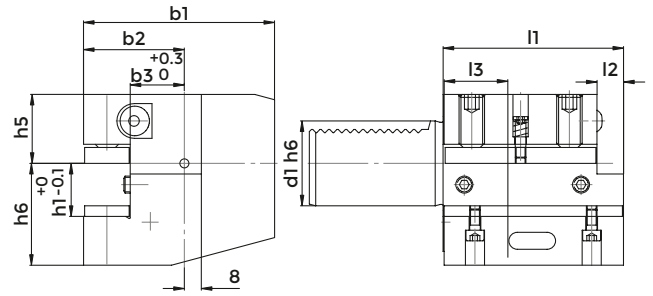


**DIN 69880 - C1**

COD.	d1	b1	b2	b3	h1	h5	h6	l1	l2	l3
C1-30x20x70-IC	30	70	35	17	20	28	38	70	10	30
C1-40x25x85-IC	40	85	42.5	21	25	32.5	48	85	12.5	30

Spare parts p. 534

**AXIAL HOLDER, LH**



**DIN 69880 - C2**

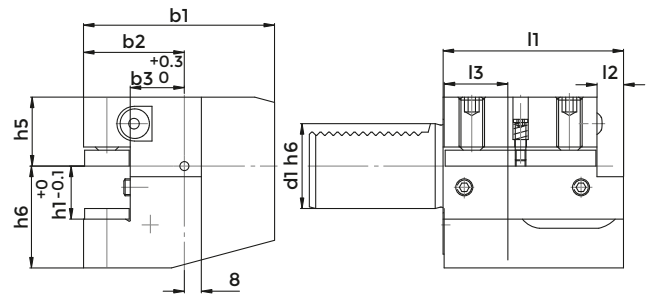
COD.	d1	b1	b2	b3	h1	h5	h6	l1	l2	l3
C2-20x16x50	20	65	40	26	16/12	25	30	50	-	30
C2-30x20x70	30	76	41	23	20/16	28	38	70	10	30
C2-40x25x85	40	90	47.5	25.5	25/20	32.5	48	85	12.5	30
C2-50x32x100	50	105	55	30.5	32/25	35	60	100	16	40
C2-60x32x125	60	125	62.5	33	32/25	42.5	62.5	125	16	40

Spare parts p. 534

**AXIAL HOLDER, LH**



**IC VERSION**

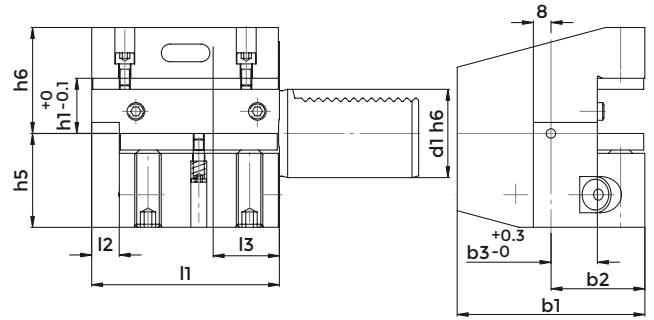


**DIN 69880 - C2**

COD.	d1	b1	b2	b3	h1	h5	h6	l1	l2	l3
C2-30x20x70-IC	30	76	41	23	20	28	38	70	10	30
C2-40x25x85-IC	40	90	47.5	25.5	25	32.5	48	85	12.5	30

Spare parts p. 534

**AXIAL HOLDER, UPSIDE-DOWN, RH**



**DIN 69880 - C3**

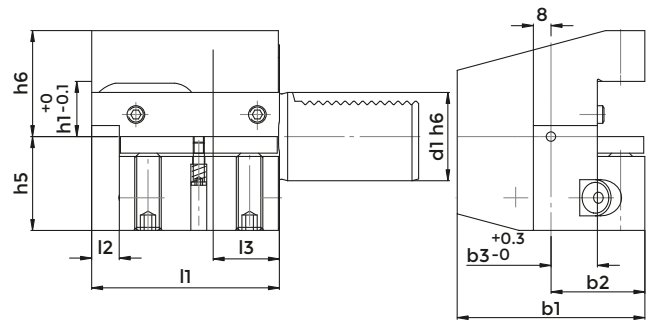
COD.	d1	b1	b2	b3	h1	h5	h6	l1	l2	l3
C3-30x20x70	30	70	35	17	20/16	35	38	70	10	30
C3-40x25x85	40	85	42.5	21	25/20	42.5	48	85	12.5	30
C3-50x32x100	50	100	50	26	32/25	50	60	100	16	40
C3-60x32x125	60	125	62.5	33	32/25	62.5	62.5	125	16	40

Spare parts p. 534

**AXIAL HOLDER, UPSIDE-DOWN, RH**



**IC VERSION**

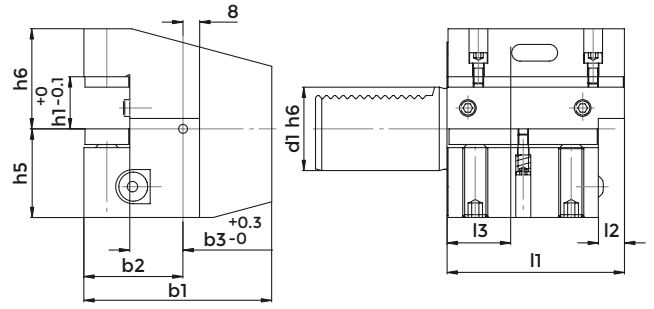


**DIN 69880 - C3**

COD.	d1	b1	b2	b3	h1	h5	h6	l1	l2	l3
C3-30x20x70-IC	30	70	35	17	20	35	38	70	10	30
C3-40x25x85-IC	40	85	42.5	21	25	42.5	48	85	12.5	30

Spare parts p. 534

**AXIAL HOLDER, UPSIDE-DOWN LH**



**DIN 69880 - C4**

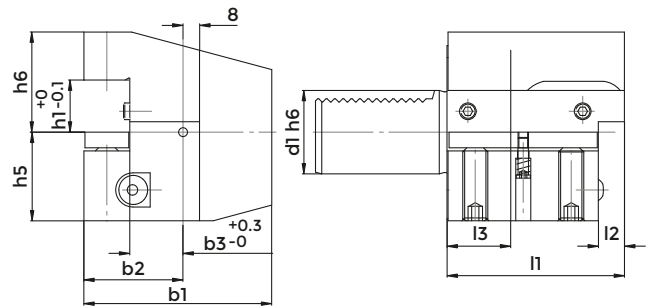
COD.	d1	b1	b2	b3	h1	h5	h6	l1	l2	l3
C4-30x20x70	30	76	41	23	20/16	35	38	70	10	30
C4-40x25x85	40	90	47.5	25.5	25/20	42.5	48	85	12.5	30
C4-50x32x100	50	105	55	30.5	32/25	50	60	100	16	40

Spare parts p. 534

**AXIAL HOLDER, UPSIDE-DOWN LH**



**IC VERSION**

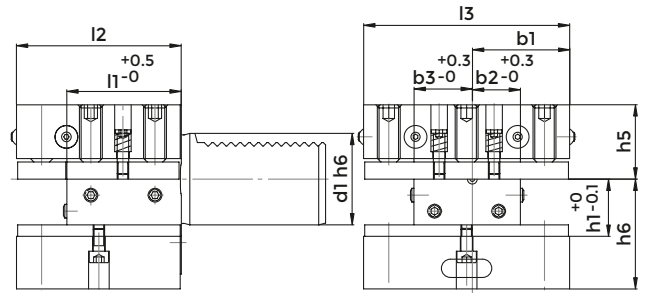


**DIN 69880 - C4**

COD.	d1	b1	b2	b3	h1	h5	h6	l1	l2	l3
C4-30x20x70-IC	30	76	41	23	20	35	38	70	10	30
C4-40x25x85-IC	40	90	47.5	25.5	25	42.5	48	85	12.5	30

Spare parts p. 534

## TOOLHOLDER WITH MULTIPLE SEATS

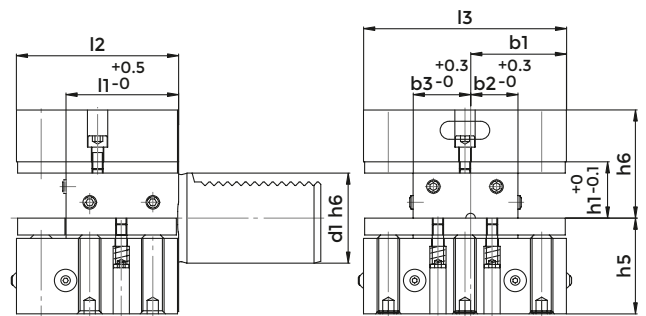


### DIN 69880 - D1

COD.	d1	b1	b2	b3	h1	h5	h6	l1	l2	l3
D1-30X20X60	30	35	17	23	20/16	28	38	42	60	76
D1-40X25X72	40	42.5	21	25.5	25/20	32.5	48	50	72	90
D1-50X32X85	50	50	26	30.5	32/25	35	60	60	85	105
D1-60X32X110	60	57.5	33	33	32/25	42.5	62.5	85	110	115

Spare parts p. 535

## TOOLHOLDER WITH MULTIPLE SEATS UPSIDE DOWN



### DIN 69880 - D2

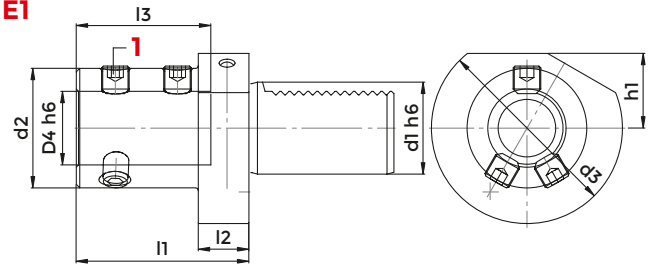
COD.	d1	b1	b2	b3	h1	h5	h6	l1	l2	l3
D2-30x20x60	30	35	17	23	20/16	35	38	42	60	76
D2-40x25x72	40	42.5	21	25.5	25/20	42.5	48	50	72	90
D2-50x32x85	50	50	26	30.5	32/25	50	60	60	85	105

Spare parts p. 535

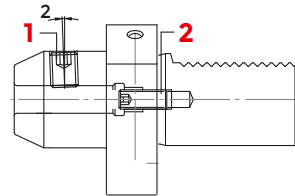
## HOLDER FOR INDEXABLE INSERT DRILLS WITH INTERNAL COOLANT SUPPLY



**TYPE E1**



**TYPE E1WN**



### DIN 69880 - E1

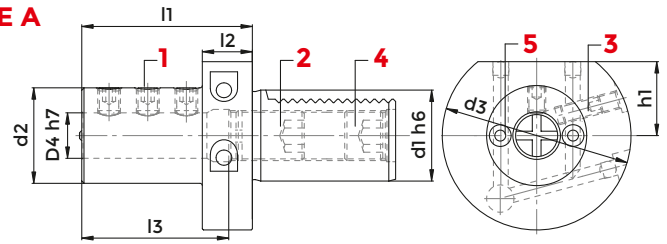
COD.	d1	d2	d3	D4	h1	l1	l2	l3	1
									SCREW
E1-20x16	20	36	50	16	-	67	18	54	811-402003
E1-20x25	20	45	50	25	-	71	18	58	811-402005
E1-30x08-WN	30	28	68	8	28	50	22	36	811-106002
E1-30x10-WN	30	35	68	10	28	54	22	40	811-106004
E1-30x12-WN	30	42	68	12	28	59	22	45	811-106005
E1-30x16	30	36	68	16	28	67	22	54	811-402003
E1-30x20	30	40	68	20	28	67	22	54	811-402003
E1-30x25	30	45	68	25	28	71	22	58	811-402005
E1-30x32	30	52	68	32	28	75	22	61	811-402005
E1-30x40	30	65	68	40	28	90	22	72	811-402007
E1-40x10-WN	40	35	83	10	32.5	54	22	40	811-106004
E1-40x12-WN	40	42	83	12	32.5	58	22	45	811-106005
E1-40x16	40	36	83	16	32.5	67	22	54	811-402003
E1-40x20	40	40	83	20	32.5	67	22	54	811-402003
E1-40x25	40	45	83	25	32.5	75	22	59	811-402005
E1-40x32	40	52	83	32	32.5	75	22	61	811-402005
E1-40x40	40	65	83	40	32.5	90	22	73	811-402007
E1-40x50	40	70	83	50	32.5	100	22	83	811-402007
E1-50x20	50	40	98	20	35	80	30	54	811-402003
E1-50x25	50	45	98	25	35	80	30	59	811-402005
E1-50x32	50	52	98	32	35	80	30	63	811-402005
E1-50x40	50	65	98	40	35	90	30	73	811-402007
E1-50x50	50	75	98	50	35	100	30	83	811-402007
E1-60x32	60	52	123	32	42.5	80	30	63	811-402005
E1-60x40	60	65	123	40	42.5	90	30	73	811-402007
E1-60x50	60	75	123	50	42.5	100	30	83	811-402007



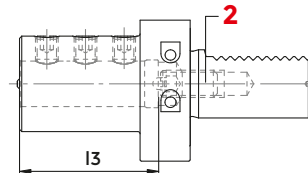
## BORING BAR HOLDER



**TYPE A**



**TYPE B**



### DIN 69880 - E2

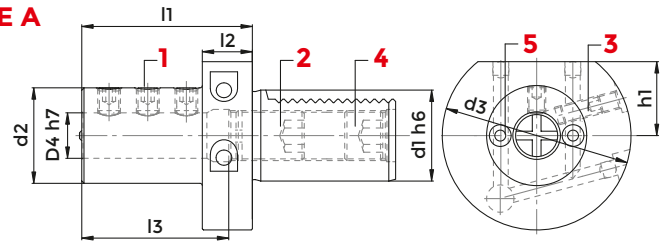
COD.	d1	d2	d3	D4	h1	l1	l2	l3	T	1	2	3	4	5
										SCREW	S7OP SCREW	SCREW	SCREW	COOLANT NOOSE
E2-16x06	16	32	40	6	18	44	13	34	B					
E2-16x08	16	32	40	8	18	44	13	34	B	811-102020	811-102021	811-102011	-	833-001280
E2-16x10	16	32	40	10	18	44	13	34	B	811-102020	811-102021	811-102011	-	833-001280
E2-16x12	16	40	40	12	18	44	13	34	B	811-102028	811-402065	811-102011	-	833-001280
E2-16x16	16	40	40	16	18	44	13	34	B	811-102028	811-402065	811-102011	-	833-001280
E2-20x06	20	40	50	6	23	50	18	42	B	811-102021	811-102015	-	-	833-001080
E2-20x08	20	40	50	8	23	50	18	42	B	811-102021	811-102023	-	-	833-001080
E2-20x10	20	40	50	10	23	50	18	42	B	811-102029	811-102023	-	-	833-001080
E2-20x12	20	40	50	12	23	50	18	42	B	811-102029	811-402066	-	-	833-001080
E2-20x16	20	42	50	16	23	50	18	42	B	811-102028	811-402066	-	-	833-001080
E2-20x20	20	49	50	20	23	50	18	42	B	811-102028	811-402066	-	-	833-001080
E2-20x25	20	49	50	25	23	60	18	52	B	811-102027	811-402066	-	-	833-001080
E2-30x06	30	55	68	6	28	60	22	43	A	811-102022	811-402030	811-102029	811-102070	833-001080
E2-30x08	30	55	68	8	28	60	22	43	A	811-102022	811-402030	811-102029	811-102070	833-001080
E2-30x10	30	55	68	10	28	60	22	43	A	811-102022	811-402030	811-102029	811-102070	833-001080
E2-30x12	30	55	68	12	28	60	22	43	A	811-102030	811-402030	811-102029	811-102070	833-001080
E2-30x16	30	55	68	16	28	60	22	55	A	811-102030	811-402071	811-102029	811-402072	833-001080
E2-30x20	30	55	68	20	28	60	22	54	B	811-102029	811-402028	811-102029	-	833-001080
E2-30x25	30	55	68	25	28	60	22	54	B	811-102029	811-402028	811-102029	-	833-001080
E2-30x32	30	67	68	32	28	75	22	61	B	811-102029	811-402029	811-102029	-	833-001080
E2-30x40	30	67	68	40	28	75	22	66	B	811-102029	811-402029	811-102019	-	833-001080
E2-40x06	40	55	83	6	32.5	75	22	43	A	811-102022	811-402030	811-102029	811-102070	833-001080
E2-40x08	40	55	83	8	32.5	75	22	43	A	811-102030	811-402030	811-102029	811-102070	833-001080
E2-40x10	40	55	83	10	32.5	75	22	43	A	811-102030	811-402030	811-102029	811-102070	833-001080
E2-40x12	40	55	83	12	32.5	75	22	58	A	811-102030	811-402030	811-102029	811-102070	833-001080
E2-40x16	40	55	83	16	32.5	75	22	61	A	811-102038	811-402071	811-102029	811-402072	833-001080
E2-40x20	40	55	83	20	32.5	75	22	61	A	811-102037	811-402064	811-102029	811-402073	833-001080

follows >>

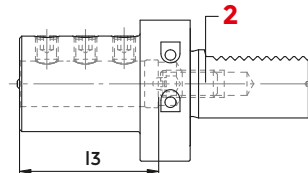
## BORING BAR HOLDER



**TYPE A**



**TYPE B**



### DIN 69880 - E2

COD.	d1	d2	d3	D4	h1	l1	l2	l3	T	1	2	3	4	5
										SCREW	STOP SCREW	SCREW	SCREW	COOLANT NOOSE
E2-40x25	40	55	83	25	32.5	75	22	61	B					
E2-40x30	40	82	83	30	32.5	75	22	61	B					
E2-40x32	40	82	83	32	32.5	75	22	61	B					
E2-40x40	40	82	83	40	32.5	90	22	76	B					
E2-40x50	40	98	98	50	35	100	-	86	B					
E2-50x12	50	68	98	12	35	90	30	71	A					
E2-50x16	50	68	98	16	35	90	30	76	A					
E2-50x20	50	68	98	20	35	90	30	76	A					
E2-50x25	50	68	98	25	35	90	30	76	A					
E2-50x32	50	69	98	32	35	90	30	76	B					
E2-50x40	50	98	98	40	35	90	-	76	B					
E2-50x50	50	98	98	50	35	100	-	86	B					
E2-60x16	60	68	123	16	42.5	90	30	76	A					
E2-60x20	60	68	123	20	42.5	90	30	76	A					
E2-60x25	60	68	123	25	42.5	90	30	76	A					
E2-60x32	60	68	123	32	42.5	90	30	76	A					
E2-60x40	60	98	123	40	42.5	90	30	76	B					
E2-60x50	60	98	123	50	42.5	100	30	86	B					

**THERE ARE TWO KINDS OF TOOLHOLDERS:**

- a) The VDI-shank is completely drilled. The tool can be positioned through the shank without having to cut it, in case it is too long for machining.
- b) The VDI-shank is not drilled and has only one adjusting screw at the end of the hole where the tool is placed.

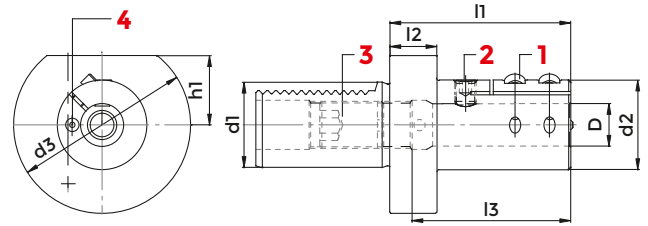
**ACCESSORIES**

p. 680

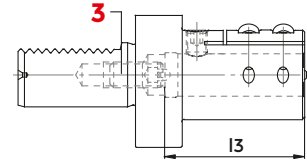


## BORING BAR HOLDER

### TYPE A



### TYPE B



## DIN 69880 - E2-TAG

COD.	d1	d2	d3	D	h1	l1	l2	l3	T	1	2	3	4
										SCREW	SCREW	STOP SCREW	COOLANT NOOSE
E2-30x06-TAG	30	32	68	6	28	75	22	65	A				
E2-30x08-TAG	30	34	68	8	28	75	22	65	A				
E2-30x10-TAG	30	38	68	10	28	75	22	65	A				
E2-30x12-TAG	30	38	68	12	28	75	22	65	A				
E2-30x16-TAG	30	42	68	16	28	75	22	70	A				
E2-30x20-TAG	30	42	68	20	28	75	22	66	B				
E2-30x25-TAG	30	48	68	25	28	75	22	66	B				
E2-30x32-TAG	30	56	68	32	28	75	22	65	B				
E2-40x08-TAG	40	34	83	8	32,5	75	22	65	A				
E2-40x10-TAG	40	38	83	10	32,5	75	22	65	A				
E2-40x12-TAG	40	38	83	12	32,5	75	22	65	A				
E2-40x16-TAG	40	42	83	16	32,5	75	22	68	A				
E2-40x20-TAG	40	42	83	20	32,5	85	22	80	A				
E2-40x25-TAG	40	48	83	25	32,5	85	22	76	B				
E2-40x32-TAG	40	56	83	32	32,5	85	22	76	B				
E2-40x40-TAG	40	65	83	40	32,5	97	22	90	B				
E2-50x32-TAG	50	56	98	32	35	98	30	90	B				
E2-50x40-TAG	50	65	98	40	35	115	30	105	B				
E2-50x50-TAG	50	76	98	50	35	125	30	112	B				

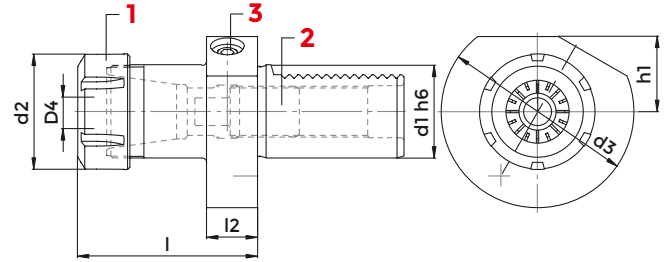
## TECHNICAL FEATURES

1. Particularly suitable for vibration-damping- boring bars with HM-shank.
2. The particular elastic gripping allows a uniform tool-clamping and reduces vibrations when the tool is working with big projections.
3. Fixing occurs by two screws. A third screw, which is perpendicular to the tool, positions the tool itself, resting on the face, on the boring bar shank.
4. For completely cylindrical tools there is a reference mark


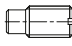

engraved on the front side of the toolholder. It is useful to position the tool.

5. There are two kinds of toolholders:
  - a) The VDI- shank is completely drilled. The tool can be positioned through the shank without having to cut it, in case it is too long for machining.
  - b) The VDI- shank is not drilled and has only one adjusting screw at the end of the hole where the tool is placed.

**COLLET CHUCK FOR COLLETS  
ACCORDING TO DIN 6499/B, ER TYPE**



**DIN 69880 - E4**

COD.	DESCRIPTION	d1	d2	d3	D4	h1	l1	l2	1	2	3
									NUT	SCREW	SCREW
E4-16x16	VDI16.L34.ER16	16	32	40	1-10	18	34	13			
E4-16x20	VDI16.L44.ER20	16	35	40	1-13	18	44	13	812-203005	811-303001	811-302106
E4-20x20	VDI20.L59.ER20	20	35	50	1-13	-	59	18	812-203006	811-303001	811-302106
E4-20x25	VDI20.L65.ER25	20	42	50	2-16	-	65	18	812-203001	811-303001	811-302106
E4-20x32	VDI20.L67.ER32	20	50	50	2-20	-	67	18	812-203002	811-303001	811-302106
E4-30x16	VDI30.L48.ER16	30	32	68	1-10	28	48	22	812-203005	811-303001	811-302106
E4-30x20	VDI30.L59.ER20	30	35	68	1-13	28	59	22	812-203006	811-303014	811-302106
E4-30x25	VDI30.L57.ER25	30	42	68	2-16	28	57	22	812-203001	811-303014	811-302106
E4-30x32	VDI30.L78.ER32	30	50	68	2-20	28	78	22	812-203002	811-303014	811-302106
E4-30x40	VDI30.L80.ER40	30	63	68	3-30	28	80	22	812-203003	811-303014	811-302106
E4-40x20	VDI40.L59.ER20	40	35	83	1-13	32.5	59	22	812-203006	811-303003	811-302106
E4-40x25	VDI40.L57.ER25	40	42	83	2-16	32.5	57	22	812-203001	811-303003	811-302106
E4-40x32	VDI40.L78.ER32	40	50	83	2-20	32.5	78	22	812-203002	811-303004	811-302106
E4-40x40	VDI40.L80.ER40	40	63	83	3-30	32.5	80	22	812-203003	811-303004	811-302106
E4-50x32	VDI50.L92.ER32	50	50	98	2-20	35	92	30	812-203002	811-303004	811-302106
E4-50x40	VDI50.L80.ER40	50	63	98	3-30	35	80	30	812-203003	811-303004	811-302106
E4-60x32	VDI60.L78.ER32	60	50	123	2-20	42.5	78	30	812-203002	811-303004	811-302106
E4-60x40	VDI60.L80.ER40	60	63	123	3-30	42.5	80	30	812-203003	811-303004	811-302106

Coolant supply unit 1/8" G not included

**ACCESSORIES**

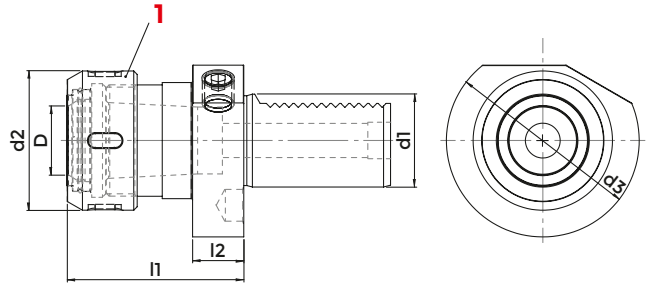
p. 639



p. 621



**COLLET CHUCK FOR COLLETS ACCORDING TO DIN 6388, EOC TYPE**



**DIN 69880 - E3**

COD.	DESCRIPTION	d1	d2	d3	D	l1	l2	1 NUT
E3-40X25	VDI.L75.EOC25	40	60	83	2-25	75	22	GOC25
E3-40X32	VDI.L90.EOC32	40	72	83	3-32	90	22	GOC32

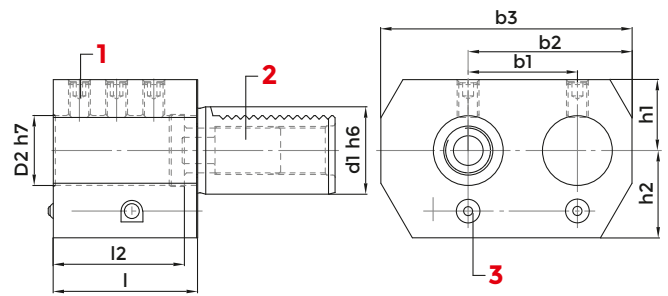
Coolant supply unit 1/8" G not included

ACCESSORIES


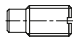
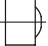
p. 696



## DOUBLE BORING BAR HOLDER, RIGHT



### DIN 69880 - E7

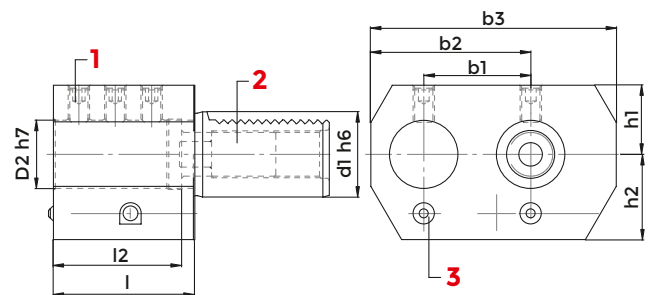
COD.	d1	D2	h1	h2	L1	L2	b1	b2	B3	1	2	3
										SCREW	STOP SCREW	COOLANT NOSE
E7-30x25	30	25	28	32	56	52	45	65	95			
E7-40x32	40	32	32.5	40	66	60	50	75	115	811-102037	811-303004	833-001100
E7-50x50	50	50	35	49	90	80	68	103	152	811-102064	811-303005	833-001080

#### ACCESSORIES

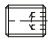
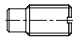
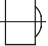


p. 680

## DOUBLE BORING BAR HOLDER, LEFT



### DIN 69880 - E8

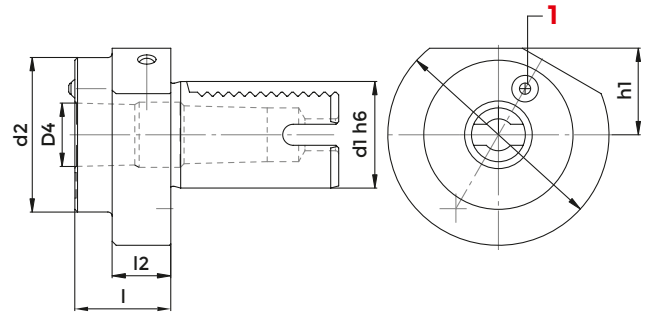
COD.	d1	D2	h1	h2	L1	L2	b1	b2	B3	1	2	3
										SCREW	STOP SCREW	COOLANT NOSE
E8-30x25	30	25	28	32	56	52	45	65	95			
E8-40x32	40	32	32.5	40	66	60	50	75	115	811-102037	811-303004	833-001100
E8-50x50	50	50	35	49	90	80	68	103	152	811-102064	811-303005	833-001080

#### ACCESSORIES

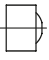


p. 680

## MORSE TAPER HOLDER



### DIN 69880 - F

COD.	d1	d2	d3	MK	D4	h1	l1	l2	1 COOLANT NOSE
									
F30-MKD1	30	-	68	1	12.065	28	27	-	833-001100
F30-MKD2	30	55	68	2	17.780	28	36	27	833-001100
F30-MKD3	30	55	68	3	23.825	28	66	41	833-001100
F40-MKD1	40	55	83	1	12.065	32.5	23	22	833-001100
F40-MKD2	40	55	83	2	17.780	32.5	36	22	833-001100
F40-MKD3	40	58	83	3	23.825	32.5	36	22	833-001100
F40-MKD4	40	68	83	4	31.267	32.5	80	22	833-001100
F50-MKD3	50	58	98	3	23.825	35	45	30	833-001100
F50-MKD4	50	68	98	4	31.267	35	55	30	833-001100
*F50-MKD5	50	75	98	5	44.399	35	72	30	833-001100

\*without VDI shank

#### ACCESSORIES

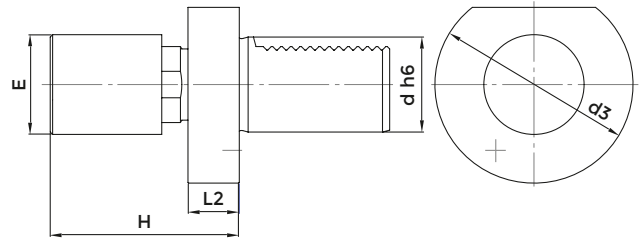
p. 681



p. 712



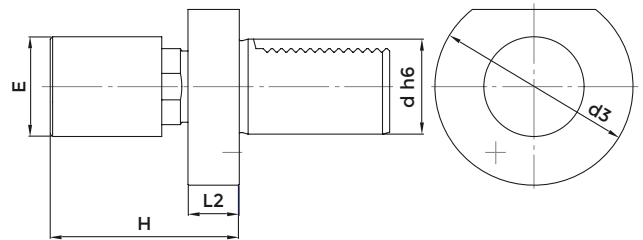
**ROTARY ADJUSTABLE BAR-STOP**



**DIN 69880**

COD.	DESCRIPTION	d	h	d3	L2	E
MW3042	BS 1 - 30 x 42	30	68 - 100	68	16	42
MW4042	BS 1 - 40 x 42	40	74 - 100	83	22	42

**DAMPED, ADJUSTABLE, BAR STOP**

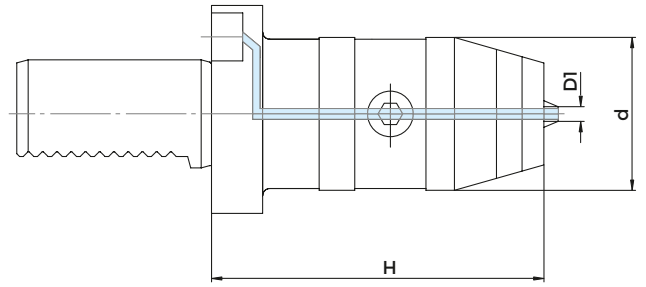


**DIN 69880**

COD.	DESCRIPTION	d	h	d3	L2	E
MW-2042-AM	BS 2 - 20 x 42	20	82 - 95	50	30	42
MW-3042-AM	BS 2 - 30 x 42	30	68 - 100	68	16	42
MW-3056-AM	BS 2 - 30 x 56	30	68 - 100	68	16	56
MW-4042-AM	BS 2 - 40 x 42	40	74 - 100	83	22	42
MW-4056-AM	BS 2 - 40 x 56	40	74 - 100	83	22	56



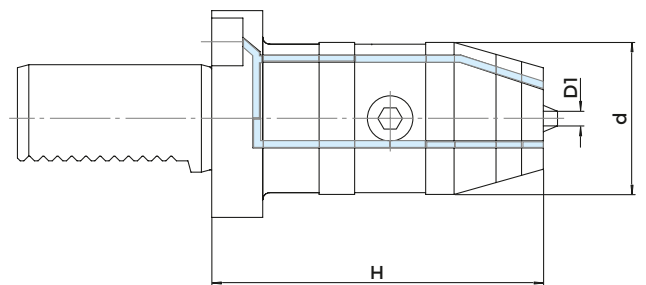
**ADAPTORS FOR DRILLS WITH  
INTERNAL COOLANT SUPPLY**



**DIN 69880 - KS1**

COD.	DESCRIPTION	H	d	CLAMPING CAPACITY
KS1-30-13	VDI30x55 0,5-13	90	50	0,5-13
KS1-30-16	VDI30x55 2,5-16	90	50	2,5-16
KS1-40-13	VDI40x63 0,5-13	90	50	0,5-13
KS1-40-16	VDI40x63 2,5-16	90	50	2,5-16

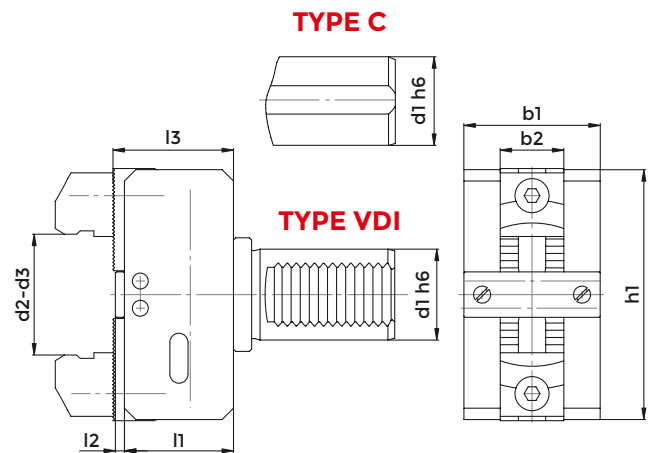
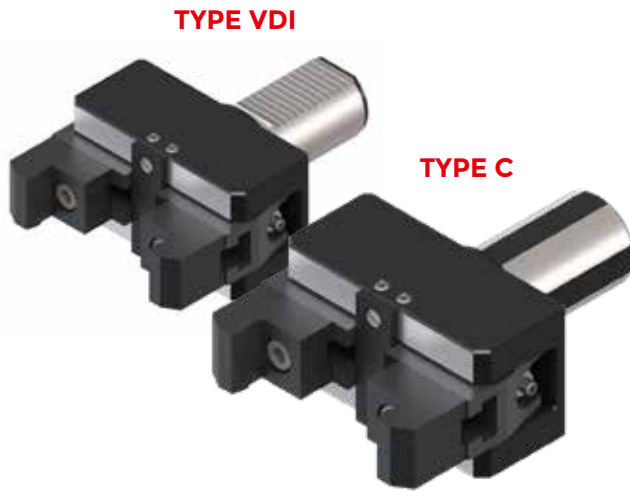
**ADAPTORS FOR DRILLS WITH  
LATERAL COOLANT SUPPLY**



**DIN 69880 - KS2**

COD.	DESCRIPTION	H	d	CLAMPING CAPACITY
KS2-30-16	VDI30x55 2,5-16	82	57	2,5-16
KS2-40-13	VDI40x63 0,5-13	85	57	0,5-13
KS2-40-16	VDI40x63 2,5-16	85	57	2,5-16

## SPRING BAR PULLER

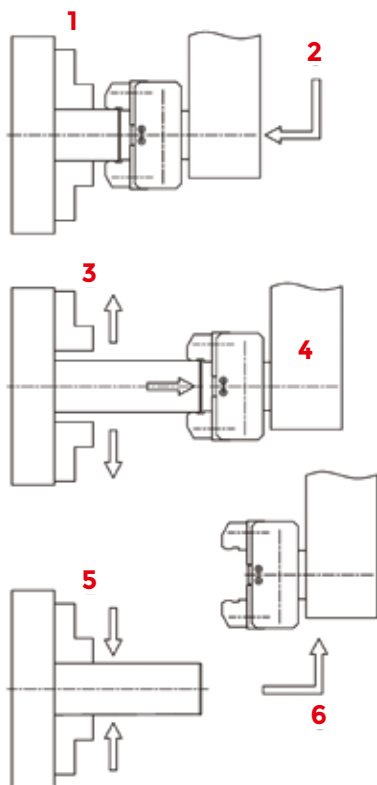


### DIN 69880 - HK1

COD.	TYPE	d1	d2 (short)	d3 (long)	b1	b2	h1	l1	l2	l3
H120K	VDI	20	6-56	-	50	28	72	46	4	51
H125KC	C	25	6-56	54-110	50	28	72	46	4	51
H130K	VDI	30	6-56	54-110	50	28	72	46	4	51
H132KC	C	32	6-56	54-110	50	28	72	46	4	51
H140K	VDI	40	6-66	54-110	60	28	110	48	4	53
H140KC	C	40	6-66	54-110	60	28	110	48	4	53
H150KC	C	50	10-75	62-125	65	28	130	67	5	73

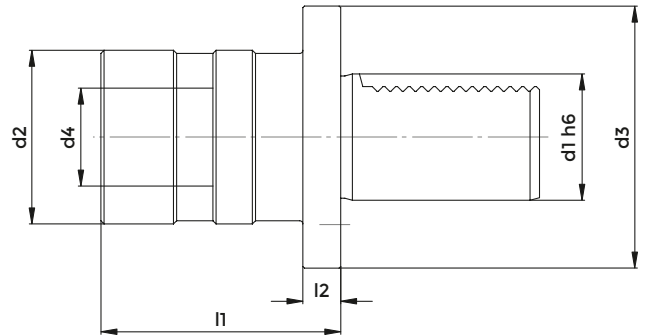
Spare parts p. 535

## OPERATING MANUAL FOR BAR PULLER



1. The self-centering chuck stops.
2. Set-up the jaws 3-5mm less than the measure of the bar diameter
3. The self-centering chuck opens
4. The bar puller pulls the bar because the jaws are normally closed by an internal spring.
5. The self-centering chuck closes
6. The bar puller slides out of the previously locked diameter

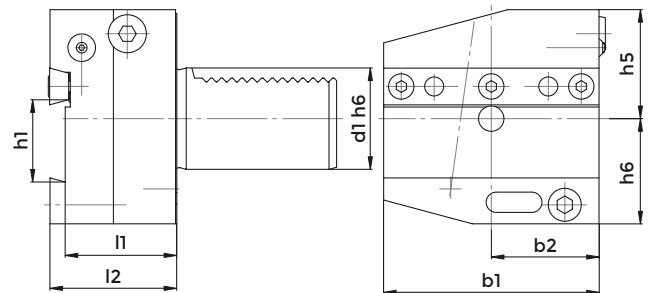
## TENSION AND COMPRESSION TAPPING HEAD



### DIN 69880 - M

COD.	d1	TAP RANGE	SIZE	RANGE	d2	d3	D	L	l2
M2710	20	M3-M12	1	- 9 + 9	38	50	19	55	12
M2720	30	M3-M12	1	- 9 + 9	38	68	19	55	12
M2730	40	M3-M12	1	- 9 + 9	38	83	19	55	12
M2820	30	M6-M20	2	- 15 + 15	55	68	31	77	12
M2830	40	M6-M20	2	- 15 + 15	55	83	31	77	12
M2930	40	M14-M33	3	- 24 + 24	79	83	48	110	12
M2840	50	M6 - M 20	2	- 15 + 15	55	83	31	77	12

## TOOLHOLDER FOR CUT OFF TOOLS ADJUSTABLE IN HEIGHT, RIGHT



### DIN 69880 - AR

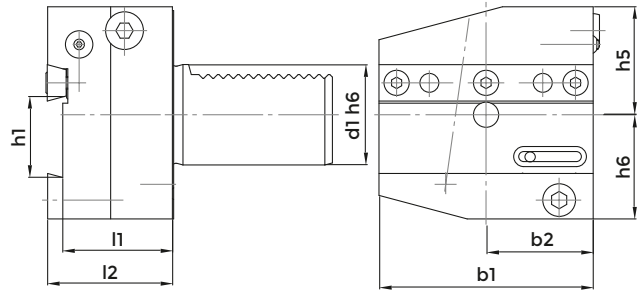
COD.	d1	b1	b2	h1	h5	h6	l1	l2
AR3026	30	70	35	26	32	39	44	50
AR4026	40	85	42.5	26	43	41.5	44	50
AR4032	40	85	42.5	32	43	41.5	44	50
AR5032	50	100	50	32	43	45	44	50

Spare parts p. 537

**TOOLHOLDER FOR CUT OFF TOOLS  
ADJUSTABLE IN HEIGHT, RIGHT**



IC VERSION 

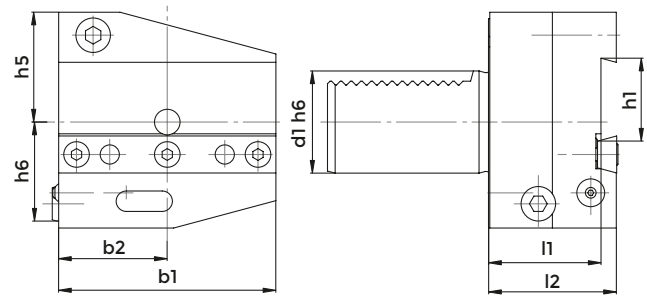


**DIN 69880 - AR**

COD.	d1	b1	b2	h1	h5	h6	l1	l2
AR3026-IC	30	70	35	26	32	39	44	50
AR4026-IC	40	85	42.5	26	43	41.5	44	50
AR4032-IC	40	85	42.5	32	43	41.5	44	50

Spare parts p. 537

**TOOLHOLDER FOR CUT OFF TOOLS  
ADJUSTABLE IN HEIGHT, UPSIDE-DOWN, LEFT**

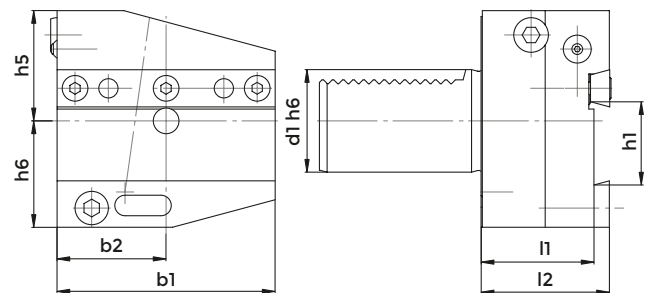


**DIN 69880 - ALU**

COD.	d1	b1	b2	h1	h5	h6	l1	l2
ALU4032	40	85	42.5	32	43	41.5	44	50

Spare parts p. 537

**TOOLHOLDER FOR CUT OFF TOOLS  
ADJUSTABLE IN HEIGHT, LEFT**



**DIN 69880 - AL**

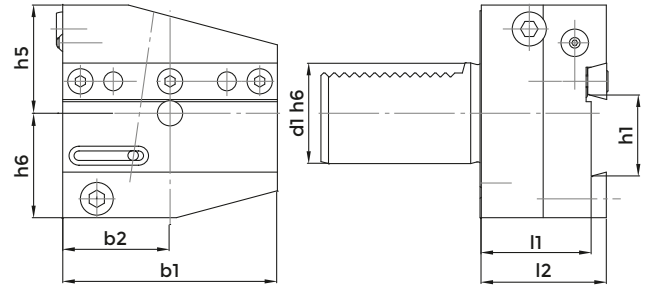
COD.	d1	b1	b2	h1	h5	h6	l1	l2
AL3026	30	70	35	26	32	39	44	50
AL4032	40	85	42.5	32	43	41.5	44	50

Spare parts p. 537

**TOOLHOLDER FOR CUT OFF TOOLS  
ADJUSTABLE IN HEIGHT, LEFT**



IC VERSION

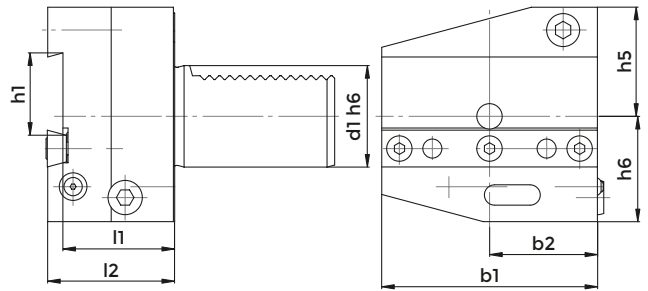


**DIN 69880 - AL**

COD.	d1	b1	b2	h1	h5	h6	l1	l2
AL4032-IC	40	85	42.5	32	43	41.5	44	50

Spare parts p. 537

**TOOLHOLDER FOR CUT OFF TOOLS ADJUSTABLE  
IN HEIGHT, UPSIDE-DOWN, RIGHT**

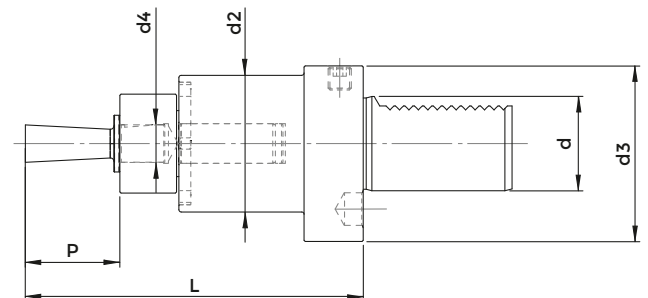


**DIN 69880 - ARU**

COD.	d1	b1	b2	h1	h5	h6	l1	l2
ARU3026	30	70	35	26	38	35	44	50
ARU4032	40	85	42.5	32	43	41.5	44	50

Spare parts p. 537

**BROACH TOOLHOLDER**



**DIN 69880**

COD.	DESCRIPTION	d4	P	d	d2	d3	L
9319	VDI 20 - G12	12	25	20	44	50	57
9320	VDI 30 - G12	12	25	30	58	68	83
9321	VDI 30 - G16	16	40	30	58	68	83
9322	VDI 40 - G12	12	25	40	58	83	83
9323	VDI 40 - G16	16	40	40	58	83	83

Spare parts p. 537

## KIT VDI TOOL HOLDERS



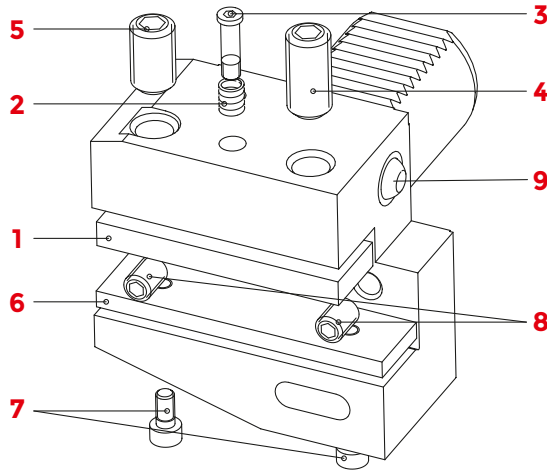
COD.	CONTENUTO DEL KIT
<p>KIT VDI 30DX</p> <p>The same Kit can be supplied with LEFT radial and axial toolholders with code n° KIT VDI 30SX</p>	N°4 turning RH short (B1)
	N°1 turning RH overhead (B3)
	N°1 axial holder RH (C1)
	N°1 insert drill holder Ø20 (E1)
	N°1 boring bar holder Ø25 (E2)
	N°1 boring bar holder Ø20 (E2)
	N°1 boring bar holder Ø16 (E2)
	N°2 collet chucks ER32 (E4)
	N°1 reduction Ø25-10
	N°1 reduction Ø25-12
	N°10 collets ER32 (Ø3 4 6 8 10 12 14 16 18 20)
N°1 wrench ER32	

## TOOLHOLDERS KIT



COD.	CONTENUTO DEL KIT
<p>KIT VDI 40DX</p> <p>The same Kit can be supplied with LEFT radial and axial toolholders with code n° KIT VDI 40SX</p>	N°4 turning RH short (B1)
	N°1 turning RH overhead (B3)
	N°1 axial holder RH (C1)
	N°1 insert drill holder Ø32 (E1)
	N°1 boring bar holder Ø16 (E2)
	N°1 boring bar holder Ø25 (E2)
	N°1 boring bar holder Ø32 (E2)
	N°2 collet chucks ER32 (E4)
	N°1 reduction Ø32-12
	N°1 reduction Ø32-20
	N°1 reduction MT3
N°10 collets ER32 (Ø3 4 6 8 10 12 14 16 18 20)	
N°1 wrench ER32	

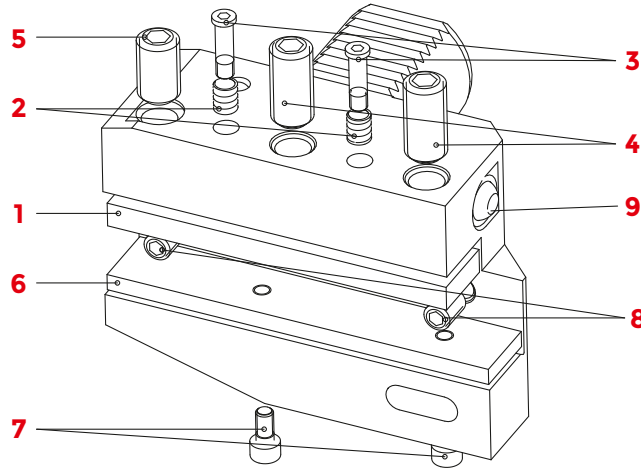
**SPARE PARTS**



**DIN 69880 - B1 - B2 - B3 - B4**

	1	2	3	4	5	6	7	8	9
COD.	TOOL CLAMP PLATE	SPRING	SCREW	STOP SCREW	LOCKING SCREW SHORT	SHIM PLATE	SCREW	SCREW	COOLANT NOOSE
B1- 16x12x24	832-002084	824-101010	811-302009	811-102020	811-102019	-	-	811-102020	833-001060
B3-16X12X24	832-002084	824-101010	811-302009	811-102020	811-102019	-	-	811-102020	833-001060
B1-20x16x30	832-002003	824-101010	811-302004	811-102030	811-102029	832-003003	811-101016	811-102020	833-001100
B2 20x16x30	832-002003	824-101010	811-302004	811-102030	811-102029	832-003003	811-101016	811-102020	833-001100
B3-20X16X30	832-002003	824-101010	811-302004	811-102030	811-102029	832-003003	811-101016	811-102020	833-001100
B3-20X16X40	832-002003	824-101010	811-302004	811-102030	811-102029	832-003003	811-101016	811-102020	833-001100
B1-30x20x40	832-002012	824-101010	811-302004	811-102044	811-102043	832-003007	811-101016	811-102028	833-001120
B1-30X20X40-IC	832-002012	824-101010	811-302004	811-102044	811-102043	-	-	811-102028	833-001120
B1-30x20x60	832-002012	824-101010	811-302004	811-102044	811-102043	832-003007	811-101016	811-102028	833-001120
B2-30x20x40	832-002012	824-101010	811-302004	811-102044	811-102043	832-003007	811-101016	811-102028	833-001120
B2-30X20X40-IC	832-002012	824-101010	811-302004	811-102044	811-102043	-	-	811-102028	833-001120
B2-30x20x60	832-002012	824-101010	811-302004	811-102044	811-102043	832-003007	811-101016	811-102028	833-001120
B3-30x20x40	832-002012	824-101010	811-302004	811-102045	811-102044	832-003007	811-101016	811-102028	833-001120
B3-30X20X40-IC	832-002012	824-101010	811-302004	811-102045	811-102044	-	-	811-102028	833-001120
B4-30x20x40	832-002012	824-101010	811-302004	811-102045	811-102044	832-003007	811-101016	811-102028	833-001120
B4-30X20X40-IC	832-002012	824-101010	811-302004	811-102045	811-102044	-	-	811-102028	833-001120
B1-40x25x44	832-002019	824-101010	811-302004	811-102045	811-102044	832-003012	811-101016	811-102028	833-001120
B1-40X25X44-IC	832-002019	824-101010	811-302004	811-102045	811-102044	-	-	811-102028	833-001120
B2-40x25x44	832-002019	824-101010	811-302004	811-102045	811-102044	832-003012	811-101016	811-102028	833-001120
B2-40X25X44-IC	832-002019	824-101010	811-302004	811-102045	811-102044	-	-	811-102028	833-001120
B3-40x25x44	832-002019	824-101010	811-302004	811-102047	811-102045	832-003033	811-101016	811-102028	833-001120
B3-40X25X44-IC	832-002019	824-101010	811-302004	811-102047	811-102045	-	-	811-102028	833-001120
B4-40x25x44	832-002019	824-101010	811-302004	811-102047	811-102045	832-003033	811-101016	811-102028	833-001120
B4-40X25X44-IC	832-002019	824-101010	811-302004	811-102047	811-102045	-	-	811-102028	833-001120
B1-50x32x55	832-002025	824-101010	811-302004	811-102045	-	832-003016	811-101017	811-102036	833-001120
B2-50x32x55	832-002025	824-101010	811-302004	811-102045	-	832-003016	811-101017	811-102036	833-001120
B3-50x32x55	832-002025	824-101010	811-302004	811-102083	811-102047	832-003034	811-101017	811-102036	833-001120
B4-50x32x55	832-002025	824-101010	811-302004	811-102083	811-102047	832-003034	811-101017	811-102036	833-001120
B1-60x32x60	832-002028	824-101020	811-302013	811-102054	-	832-003019	811-101017	811-102036	833-001120
B2-60x32x60	832-002028	824-101020	811-302013	811-102054	-	832-003019	811-101017	811-102036	833-001120
B3-60x32x60	832-002028	824-101020	811-302013	811-102055	-	832-003019	811-101017	811-102036	833-001120
B4-60x32x60	832-002028	824-101020	811-302013	811-102055	-	832-003019	811-101017	811-102036	833-001120

**SPARE PARTS**

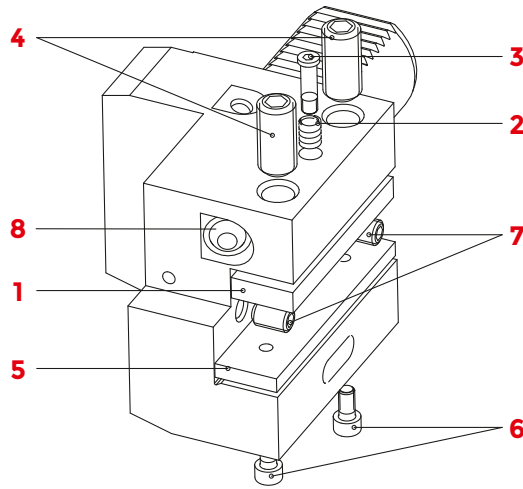


**DIN 69880 - B5 - B6 - B7 - B8**

COD.	1 TOOL CLAMP PLATE	2 SPRING	3 Q SCREW	4 Q SCREW	5 Q LOCKING SCREW SHORT	6 SHIM PLATE	7 Q SCREW	8 Q SCREW	9 COOLANT NOOSE
B5-30x20x40	832-002013	824-101010	2 811-302004	2 811-102044	2 811-102043	832-003009	811-101016	2 811-102028	833-001120
B6-30x20x40	832-002013	824-101010	2 811-302004	2 811-102044	2 811-102043	832-003009	811-101016	2 811-102028	833-001120
B7-30x20x40	832-002013	824-101010	2 811-302004	2 811-102045	2 811-102044	832-003009	811-101016	1 811-102028	833-001120
B8-30x20x40	832-002013	824-101010	2 811-302004	2 811-102045	2 811-102044	832-003009	811-101016	1 811-102028	833-001120
B5-40x25x44	832-002021	824-101010	2 811-302004	2 811-102045	2 811-102044	832-003014	811-101016	2 811-102028	833-001120
B6-40x25x44	832-002021	824-101010	2 811-302004	2 811-102045	2 811-102044	832-003014	811-101016	2 811-102028	833-001120
B7-40x25x44	832-002021	824-101010	2 811-302004	2 811-102047	2 811-102045	832-003014	811-101016	2 811-102028	833-001120
B8-40x25x44	832-002021	824-101010	2 811-302004	2 811-102047	2 811-102045	832-003014	811-101016	2 811-102028	833-001120
B5-50x32x55	832-002026	824-101010	2 811-302004	2 811-102045	3 -	832-003018	811-101017	2 811-102036	833-001120
B6-50x32x55	832-002026	824-101010	2 811-302004	2 811-102045	3 -	832-003018	811-101017	2 811-102036	833-001120
B7-50x32x55	832-002026	824-101010	2 811-302004	2 811-102083	2 811-102047	832-003018	811-101017	2 811-102036	833-001120
B8-50x32x55	832-002026	824-101010	2 811-302004	2 811-102083	2 811-102047	832-003018	811-101017	2 811-102036	833-001120
B5-60x32x60	832-002029	824-101020	2 811-302013	2 811-102054	3 -	832-003020	811-101017	2 811-102036	833-001120
B6-60x32x60	832-002029	824-101020	2 811-302013	2 811-102054	3 -	832-003020	811-101017	2 811-102036	833-001120



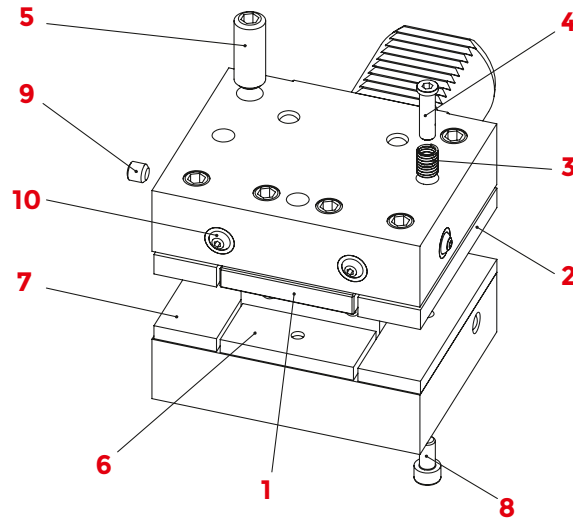
**SPARE PARTS**



**DIN 69880 - C1 - C2 - C3 - C4**

COD.	1	2	3	4	5	6	7	8				
	TOOL CLAMP PLATE	SPRING	Q	SCREW	Q	SCREW	Q	SHIM PLATE	SCREW	Q	SCREW	COOLANT NOOSE
												
C1-20x16x50	832-002003	824-101010	1	811-302004	1	811-102030	2	832-003002	811-101016	1	811-102020	833-001100
C2-20x16x50	832-002003	824-101010	1	811-302004	1	811-102030	2	832-003002	811-101016	1	811-102020	833-001100
C1-30x20x70	832-002012	824-101010	1	811-302004	1	811-102044	2	832-003007	811-101016	1	811-102028	833-001120
C1-30x20x70-IC	832-002012	824-101010	1	811-302004	1	811-102044	2	-	-	-	811-102028	833-001120
C2-30x20x70	832-002012	824-101010	1	811-302004	1	811-102044	2	832-003007	811-101016	1	811-102028	833-001120
C2-30x20x70-IC	832-002012	824-101010	1	811-302004	1	811-102044	2	-	-	-	811-102028	833-001120
C3-30x20x70	832-002012	824-101010	1	811-302004	1	811-102045	2	832-003007	811-101016	1	811-102028	833-001120
C3-30x20x70-IC	832-002012	824-101010	1	811-302004	1	811-102045	2	-	-	-	811-102028	833-001120
C4-30x20x70	832-002012	824-101010	1	811-302004	1	811-102045	2	832-003007	811-101016	2	811-102028	833-001120
C4-30x20x70-IC	832-002012	824-101010	1	811-302004	1	811-102045	2	-	-	-	811-102028	833-001120
C1-40x25x85	832-002019	824-101010	1	811-302004	1	811-102045	2	832-003012	811-101016	2	811-102028	833-001120
C1-40x25x85-IC	832-002019	824-101010	1	811-302004	1	811-102045	2	-	-	-	811-102028	833-001120
C2-40x25x85	832-002019	824-101010	1	811-302004	1	811-102045	2	832-003012	811-101016	2	811-102028	833-001120
C2-40x25x85-IC	832-002019	824-101010	1	811-302004	1	811-102045	2	-	-	-	811-102028	833-001120
C3-40x25x85	832-002019	824-101010	1	811-302004	1	811-102047	2	832-003012	811-101016	2	811-102028	833-001120
C3-40x25x85-IC	832-002019	824-101010	1	811-302004	1	811-102047	2	-	-	-	811-102028	833-001120
C4-40x25x85	832-002019	824-101010	1	811-302004	1	811-102047	2	832-003012	811-101016	2	811-102028	833-001120
C4-40x25x85-IC	832-002019	824-101010	1	811-302004	1	811-102047	2	-	-	-	811-102028	833-001120
C1-50x32x100	832-002025	824-101010	1	811-302004	1	811-102045	2	832-003016	811-101017	2	811-102036	833-001120
C2-50x32x100	832-002025	824-101010	1	811-302004	1	811-102045	2	832-003016	811-101017	2	811-102036	833-001120
C3-50x32x100	832-002025	824-101010	1	811-302004	1	811-102083	2	832-003016	811-101017	2	811-102036	833-001120
C4-50x32x100	832-002025	824-101010	1	811-302004	1	811-102083	2	832-003016	811-101017	2	811-102036	833-001120
C1-60x32x125	832-002028	824-101020	1	811-302013	1	811-102054	2	832-003019	811-101017	2	811-102036	833-001120
C2-60x32x125	832-002028	824-101020	1	811-302013	1	811-102054	2	832-003019	811-101017	2	811-102036	833-001120
C3-60x32x125	832-002028	824-101020	1	811-302013	1	811-102055	2	832-003019	811-101017	2	811-102036	833-001120
C4-60x32x125	832-002028	824-101020	1	811-302013	1	811-102055	2	832-003019	811-101017	2	811-102036	833-001120

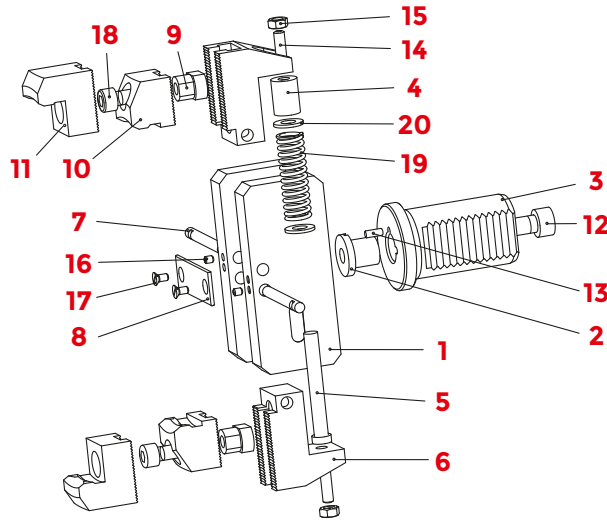
**SPARE PARTS**



**DIN 69880 - D1 - D2**

	1	2	3	4	5	6	7	8	9	10
COD.	TOOL CLAMP PLATE (rad)	TOOL CLAMP PLATE (ax)	SPRING	SCREW	LOCKING SCREW	SHIM PLATE (rad)	SHIM PLATE (ax)	SCREW	SCREW	COOLANT NOOSE
D1-30x20x60	832-002008	832-002012	824-101010	811-302004	811-102030	832-003423	832-003006	811-101016	811-106015	833-001060
D2-30x20x60	832-002008	832-002012	824-101010	811-302004	811-102031	832-003423	832-003006	811-101016	811-106015	833-001060
D1-40x25x72	832-002227	832-002019	824-101010	811-302004	811-102039	832-003424	832-003010	811-101016	811-106015	833-001100
D2-40x25x72	832-002227	832-002019	824-101010	811-302004	811-102041	832-003424	832-003010	811-101016	811-106015	833-001100
D1-50x32x85	832-002022	832-002025	824-101010	811-302004	811-102039	832-003425	832-003015	811-101017	811-102026	833-001100
D2-50x32x85	832-002022	832-002025	824-101010	811-302004	811-102041	832-003425	832-003015	811-101017	811-102026	833-001080
D1-60x32x110	832-002228	832-002229	824-101020	811-302013	811-102047	832-003426	832-003017	811-101017	811-102026	833-001110

**SPARE PARTS**

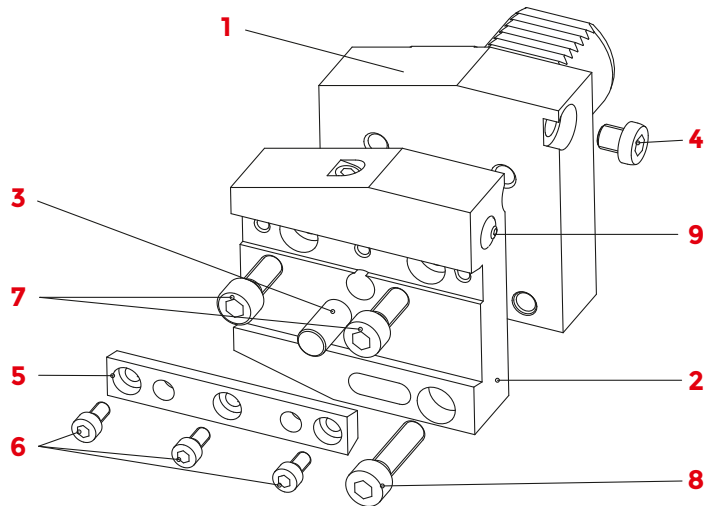


**DIN 69880 - HK1**

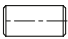


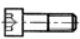



	1	2	3	4	5	6	7	8	9	10
COD.	BODY	THREADED PAWL	SHANK	PAWL	PIN	JAW BASE	PIN	PLATE	DIE SLIDE	SHORT JAW
H120K	KH1-1-20	811-302044	KH1-3-20	832-012013	832-008003	832-012003	832-008005	832-006011	811-302023	832-012002
H125KC	KH1-1-30	811-302022	KH1-3-25	832-012013	832-008003	832-012003	832-008005	832-006011	811-302023	832-012002
H130K	KH1-1-30	811-302022	KH1-3-30	832-012013	832-008003	832-012003	832-008005	832-006011	811-302023	832-012002
H132KC	KH1-1-30	811-302022	KH1-3-32	832-012013	832-008003	832-012003	832-008005	832-006011	811-302023	832-012002
H140K	KH1-1-40	811-302022	KH1-3-40	832-012005	832-008004	832-012004	832-008006	832-006012	811-302023	832-012002
H140KC	KH1-1-40	811-302022	KH1-3-40C	832-012005	832-008004	832-012004	832-008006	832-006012	811-302023	832-012002
H150KC	KH1-1-5060	811-302056	KH1-30-50C	832-012009	832-008008	832-012010	832-008009	832-006015	811-302117	832-012011

	11	12	13	14	15	16	17	18	19	20
COD.	LONG JAW	SCREW	PIN	SCREW	NUT	SCREW	SCREW	SCREW	SPRING	WASHER
H120K	832-012001	811-401111	815-210090	811-102022	812-101004	811-102002	811-108006	811-101040	824-101050	813-101090
H125KC	832-012001	811-101055	815-210090	811-102022	812-101004	811-102002	811-108006	811-101040	824-101050	813-101090
H130K	832-012001	811-101055	815-210090	811-102022	812-101004	811-102002	811-108006	811-101040	824-101050	813-101090
H132KC	832-012001	811-101055	815-210090	811-102022	812-101004	811-102002	811-108006	811-101040	824-101050	813-101090
H140K	832-012001	811-101055	815-210090	811-102022	812-101004	811-102002	811-108006	811-101040	824-101060	813-101090
H140KC	832-012001	811-101055	815-210090	811-102022	812-101004	811-102002	811-108006	811-101040	824-101060	813-101090
H150KC	832-012012	811-101068	815-210180	811-102030	812-101005	811-102002	811-108006	811-101052	824-101120	813-101100

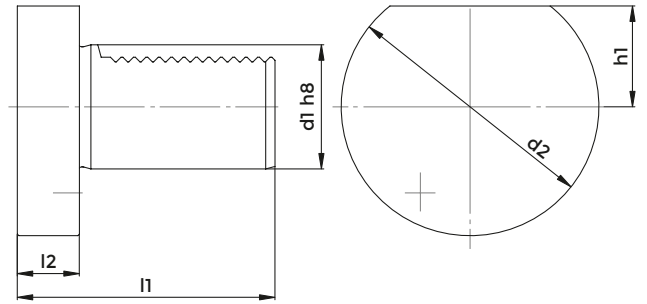
**SPARE PARTS**



**DIN 69880 - AR - AL - ARU - ALU**

	1	2	3	4	5	6	7	8	9
COD.	VDI SHANK	TOOLHOLDER PLATE	PIN	STOP SCREW	TOOL CLAMPING	SCREW	SCREW	SCREW	COOLANT NOOSE
									
AR3026	117-130011	117-130101	815-210010	811-303011	832-002037	811-101016	811-101040	811-101042	833-001100
AR3026-IC	117-130011	117-130212	815-210010	811-303011	832-002037	811-101016	811-101040	811-101042	833-001100
AL3026	117-230011	117-230101	815-210010	811-303011	832-002037	811-101016	811-101040	811-101042	833-001100
ARU3026	117-330011	117-330101	815-210010	811-303011	832-002037	811-101016	811-101040	811-101042	833-001100
AR4026	117-140011	117-140101	815-210020	811-303011	832-002038	811-101016	811-101040	811-101042	833-001100
AR4026-IC	117-140011	117-140252	815-210020	811-303011	832-002038	811-101016	811-101040	811-101042	833-001100
AR4032	117-140011	117-140111	815-210020	811-303011	832-002039	811-101016	811-101040	811-101042	833-001100
AR4032-IC	117-140011	117-140262	815-210020	811-303011	832-002039	811-101016	811-101040	811-101042	833-001100
AL4032	117-240011	117-240111	815-210020	811-303011	832-002039	811-101016	811-101040	811-101042	833-001100
ARU4032	117-340011	117-340111	815-210020	811-303011	832-002039	811-101016	811-101040	811-101042	833-001100
ALU4032	117-440011	117-440111	815-210020	811-303011	832-002039	811-101016	811-101040	811-101042	833-001100
AR5032	117-150011	117-150111	815-210020	811-303011	832-002041	811-108018	811-101040	811-101042	833-001120

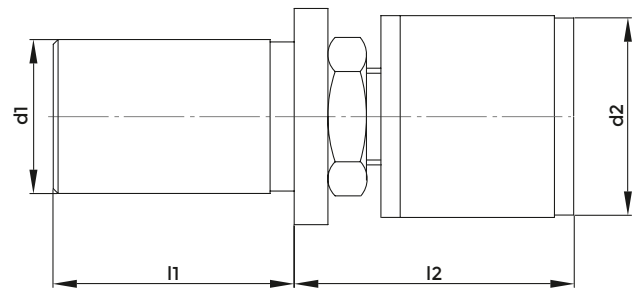
## BLANKING PLUG



### Z2

COD. (PLASTIC)	COD. (STEEL)	d1	d2	h1	l1	l2
Z216P	Z216	16	40	18	45	13
Z220P	Z220	20	50	23	56	16
Z230P	Z230	30	68	28	71	16
Z240P	Z240	40	83	32.5	83	20
Z250P	Z250	50	98	35	98	20
Z260P	Z260	60	123	42.5	114	20

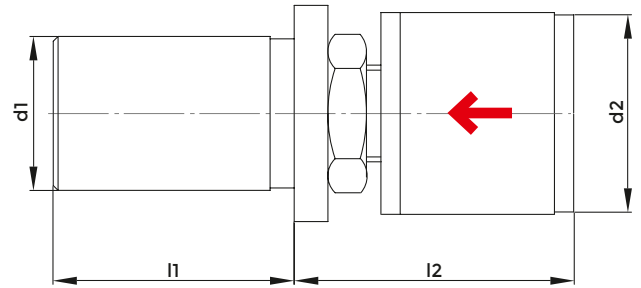
## CYLINDRICAL BAR STOP



### CW

COD.	d1	d2	l1	l2
CW-1620	16	20	32	36 - 62
1719	19,05	20	32	36 - 62
1720	19,05	26	46	45 - 75
CW-2034	20	34	50	62 - 100
1448	22	34	50	62 - 100
CW-2534	25	34	50	62 - 100
CW-2542	25	42	50	62 - 100
CW-2556	25	56	50	62 - 100
1450	25,4	34	50	62 - 100
CW-3042	30	42	50	62 - 100
1735	30	56	50	62 - 100
CW-3242	32	42	50	62 - 100
CW-3256	32	56	50	62 - 100
CW-4042	40	42	70	62 - 100
1797	40	56	70	62 - 100

## CYLINDRICAL REVOLVING BAR STOP WITH SHOCK ABSORBER

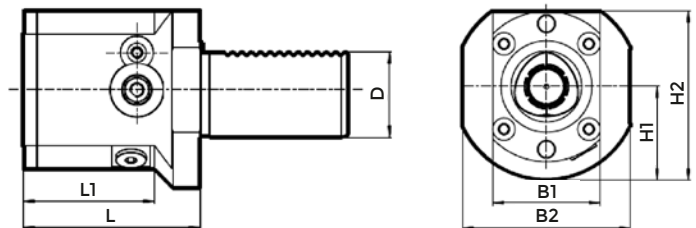


### CW

COD.	d1	d2	l1	l2
CW-2034-L35-AM	20	34	35	62 - 90
CW-2034-AM	20	34	50	62 - 100
CW-2534-AM	25	34	50	62 - 100
CW-2542-AM	25	42	50	62 - 100
CW-2556-AM	25	56	50	62 - 100
1024	25,4	42	50	62 - 100
CW-3042-AM	30	42	50	62 - 100
1552	30	56	50	62 - 100
1560	31,75	42	50	62 - 100
CW-3242-AM	32	42	50	62 - 100
CW-3256-AM	32	56	50	62 - 100
CW-4042-AM	40	42	70	62 - 100
CW-4056-AM	40	56	70	62 - 100

Unlike the normal rotating bar stop, in the shock-absorbing model, in addition to the radial bearing and the thrust bearing, there is a series of cup springs to better absorb any impacts of the bar.

## AXIAL TOOLHOLDER WITH POLYGONAL COUPLING



### DIN ISO 26623-1

COD.	SHANK	L	l1	D	B1	B2	H1	H2
VDI40L75C40R/L	C40	75	56	40	48	75	41	75
VDI40L85C50R/L	C50	85	72	40	64	75	41	83
VDI40L109C63R/L	C63	109	109	40	84	84	52	104
VDI50L85C50R/L	C50	85	62	50	64	83	49	91
VDI50L105C63R/L	C63	105	105	50	84	84	52	104